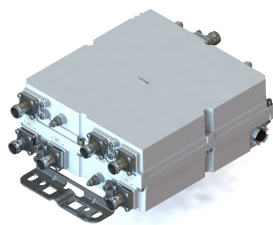


E14F60P18



CS-TPX 700/825-880/898.4-960 DC ALL, RJ50

- New 4.3-10 connectors for improved PIM performance and size reduction
- Twin configuration
- dc/AISG pass-through on all frequency ports
- Additional Rejection in 880-890 MHz band 50 dB

OBSOLETE

This product was discontinued on: December 30, 2024

Product Classification

Product Type Triplexer

General Specifications

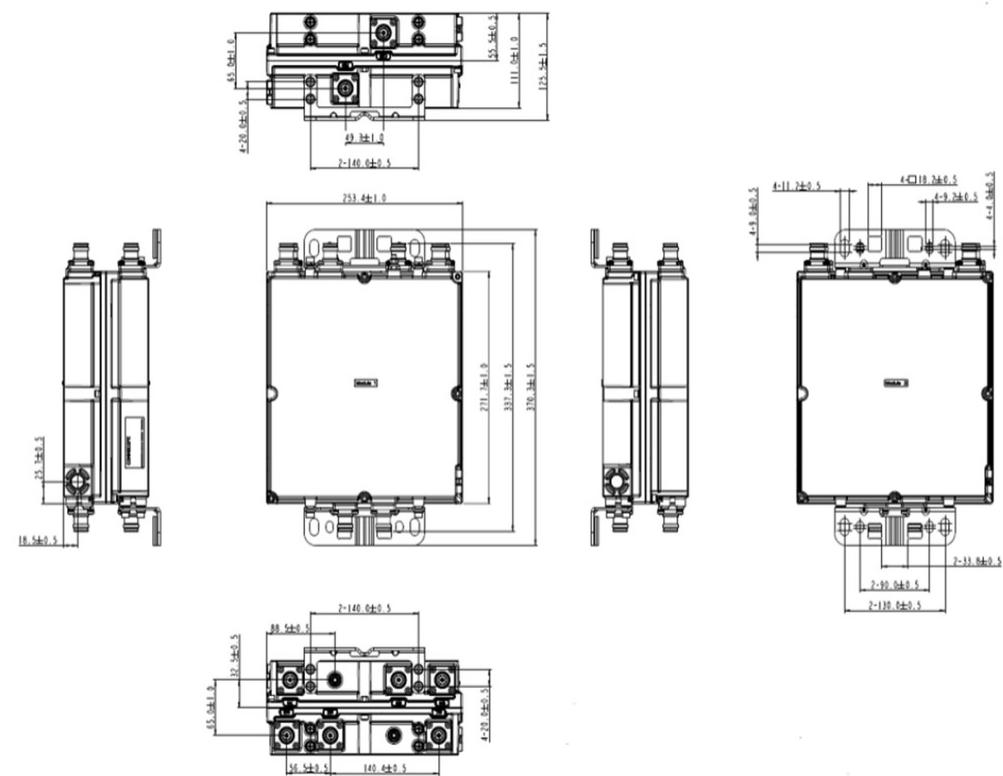
Product Family	CBC1821
Color	Gray
Common Port Label	PORT 3 COMMON
Modularity	2-Twin
Mounting	Pole Wall
Mounting Pipe Hardware	Band clamps (2)
RF Connector Interface	4.3-10 Female
RF Connector Interface Body Style	Long neck

Dimensions

Height	111 mm 4.37 in
Width	272 mm 10.709 in
Depth	254 mm 10 in
Mounting Pipe Diameter Range	42.6–122 mm

Outline Drawing

E14F60P18



Electrical Specifications

Impedance	50 ohm
License Band, Band Pass	APT 700 CEL 850 CEL 900 DCS 1800 IMT 2100 USA 700

Electrical Specifications, dc Power/Alarm

dc/AISG Pass-through Method	Factory set
dc/AISG Pass-through Path	Branch 1 Branch 2 Branch 3
dc/AISG Pass-through, combiner	Branch 1 Branch 2 Branch 3
dc/AISG Pass-through, demultiplexer	Branch 1 Branch 2 Branch 3
Lightning Surge Current	5 kA
Lightning Surge Current Waveform	8/20 waveform

Electrical Specifications

Sub-module	1 2	1 2	1 2
Branch	1	2	3

E14F60P18

Port Designation	PORT 1 850	PORT 2 900	PORT 3 700
License Band	CEL 850, Band Pass	CEL 900, Band Pass	APT 700, Band Pass USA 700, Band Pass

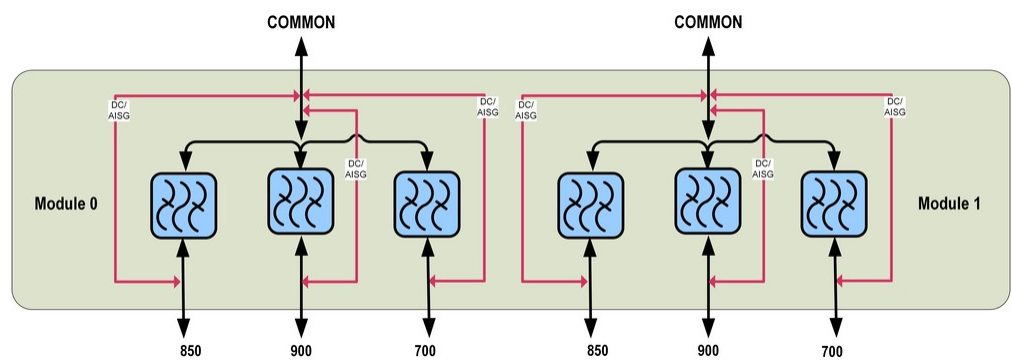
Electrical Specifications, Band Pass

Frequency Range, MHz	825–835 870–880	898.4–915 943.4–960	703–748 758–803
Insertion Loss, typical, dB	0.35	0.25	0.25
Return Loss, typical, dB	20	20	20
Isolation, minimum, dB	50	50	50
Input Power, RMS, maximum, W	160	160	160
Input Power, PEP, maximum, W	2500	2500	2500
3rd Order PIM, typical, dBc			-153
3rd Order PIM Test Method			Two +43 dBm carriers
5th Order PIM, typical, dBc		-153	
5th Order PIM Test Method		Two +43 dBm carriers	
Higher Order PIM, typical, dBc	-153		
Higher Order PIM Test Method	Two +43 dBm carriers		

Electrical Specifications, Band Reject

Frequency Range, MHz	880–890
Attenuation, minimum, dB	50

Block Diagram



Environmental Specifications

Operating Temperature	-40 °C to +60 °C (-40 °F to +140 °F)
-----------------------	--------------------------------------

E14F60P18

Corrosion Test Method	IEC 60068-2-11, 30 days
Ingress Protection Test Method	IEC 60529:2001, IP67

Packaging and Weights

Included	Mounting hardware
Volume	7.7 L
Weight, net	8.5 kg 18.739 lb

Regulatory Compliance/Certifications

Agency	Classification
ISO 9001:2015	Designed, manufactured and/or distributed under this quality management system