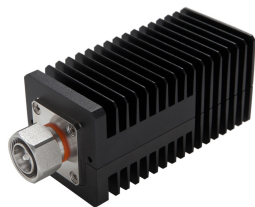


T-50-UW-43-M



Termination Load, 0–6000 MHz

Product Classification

Regional Availability	Asia Australia/New Zealand EMEA Latin America North America
Product Type	Termination Load

General Specifications

Device Type	Termination Load
Application	Indoor/Outdoor
Color	Black
Inner Contact Plating	Silver
Interface	4.3-10 Male
Outer Contact Plating	Trimetal

Dimensions

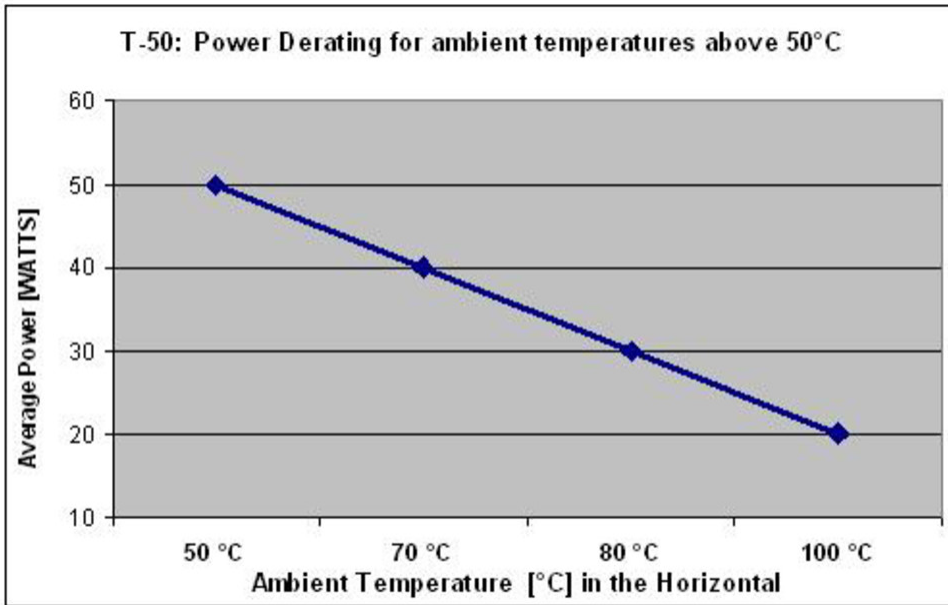
Height	50 mm 1.969 in
Width	50 mm 1.969 in
Length	125 mm 4.921 in

Electrical Specifications

Average Power, maximum	50 W
Impedance	50 ohm
Operating Frequency Band	0 – 6000 MHz
VSWR	1.2

Derating Curve

T-50-UW-43-M



Environmental Specifications

Operating Temperature	-25 °C to +50 °C (-13 °F to +122 °F)
Relative Humidity	Up to 100%
Ingress Protection Test Method	IEC 60529:2001, IP65

Packaging and Weights

Height, packed	58 mm 2.283 in
Width, packed	78 mm 3.071 in
Length, packed	158 mm 6.22 in
Weight, gross	0.42 kg 0.926 lb
Weight, net	0.37 kg 0.816 lb

Regulatory Compliance/Certifications

Agency	Classification
CHINA-ROHS	Above maximum concentration value
ISO 9001:2015	Designed, manufactured and/or distributed under this quality management system
ROHS	Compliant/Exempted
UK-ROHS	Compliant/Exempted

T-50-UW-43-M

