

RVV2VV-6533D-R7



14-port sector antenna, 2x 694–960 and 4x 1695–2690 MHz 65° HPBW and 8x 1710–2690 MHz 4x 33° HPBW, 7x RET.

- All Internal RET actuators are connected in “Cascaded SRET” configuration
- Uses the 4.3-10 connector which is 40 percent smaller than the 7-16 DIN connector
- Enhances network capacity through twin six sectors on high band with only three antenna faces while maintaining low band coverage layer through three sectors

General Specifications

| | |
|--|--|
| Antenna Type | Multibeam |
| Band | Multiband |
| Grounding Type | RF connector inner conductor and body grounded to reflector and mounting bracket |
| Performance Note | Outdoor usage |
| Radome Material | Fiberglass, UV resistant |
| Radiator Material | Low loss circuit board |
| Reflector Material | Aluminum |
| RF Connector Interface | 4.3-10 Female |
| RF Connector Location | Bottom |
| RF Connector Quantity, mid band | 12 |
| RF Connector Quantity, low band | 2 |
| RF Connector Quantity, total | 14 |

Remote Electrical Tilt (RET) Information

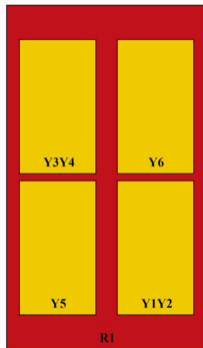
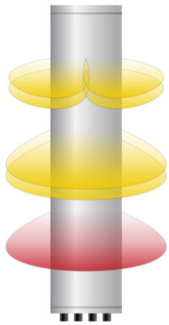
| | |
|---|-----------------------------------|
| RET Hardware | CommRET v2 |
| RET Interface | 8-pin DIN Female 8-pin DIN Male |
| RET Interface, quantity | 2 female 2 male |
| Input Voltage | 10–30 Vdc |
| Internal RET | Low band (1) Mid band (6) |
| Power Consumption, active state, maximum | 8 W |
| Power Consumption, idle state, maximum | 1 W |
| Protocol | 3GPP/AISG 2.0 (Single RET) |

Dimensions

RVV2VV-6533D-R7

| | |
|---------------------------------|----------------------|
| Width | 498 mm 19.606 in |
| Depth | 197 mm 7.756 in |
| Length | 2688 mm 105.827 in |
| Net Weight, antenna only | 54 kg 119.049 lb |

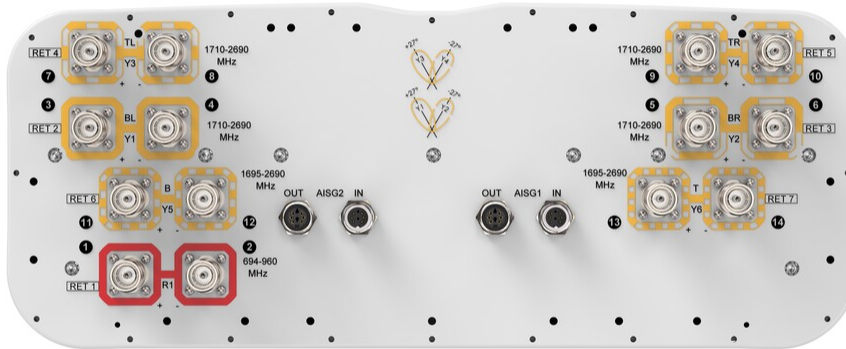
Array Layout



| Array ID | Frequency (MHz) | RF Connector | RET (SRET) | AISG No. | RET UID |
|----------|-----------------|--------------|---------------|----------|------------------|
| R1 | 694-960 | 1 - 2 | 1 | AISG1 | CPxxxxxxxxxxxxR1 |
| Y1 | 1710-2690 | 3 - 4 | 2 | AISG1 | CPxxxxxxxxxxxxY1 |
| Y2 | 1710-2690 | 5 - 6 | 3 | AISG1 | CPxxxxxxxxxxxxY2 |
| Y3 | 1710-2690 | 7 - 8 | 4 | AISG1 | CPxxxxxxxxxxxxY3 |
| Y4 | 1710-2690 | 9 - 10 | 5 | AISG1 | CPxxxxxxxxxxxxY4 |
| Y5 | 1695-2690 | 11 - 12 | 6 | AISG1 | CPxxxxxxxxxxxxY5 |
| Y6 | 1695-2690 | 13 - 14 | 7 | AISG1 | CPxxxxxxxxxxxxY6 |

(Sizes of colored boxes are not true depictions of array sizes)

Port Configuration



Electrical Specifications

Impedance 50 ohm

RVV2VV-6533D-R7

| | |
|-----------------------------------|---|
| Operating Frequency Band | 1695 – 2690 MHz 1710 – 2690 MHz 694 – 960 MHz |
| Polarization | ±45° |
| Total Input Power, maximum | 1,100 W |

Electrical Specifications

| | R1 | R1 | R1 | Y1-Y4 | Y1-Y4 | Y1-Y4 | Y5,Y6 | Y5,Y6 | Y5,Y6 |
|---|----------|----------|----------|-----------|-----------|-----------|-----------|-----------|-----------|
| | 694–790 | 790–890 | 890–960 | 1710–1920 | 1920–2180 | 2300–2690 | 1695–1920 | 1920–2180 | 2300–2690 |
| Frequency Band, MHz | 694–790 | 790–890 | 890–960 | 1710–1920 | 1920–2180 | 2300–2690 | 1695–1920 | 1920–2180 | 2300–2690 |
| RF Port | 1,2 | 1,2 | 1,2 | 3-10 | 3-10 | 3-10 | 11-14 | 11-14 | 11-14 |
| Gain, dBi | 16.4 | 16.4 | 16.6 | 18.2 | 19.3 | 19.7 | 17.3 | 18.2 | 18.5 |
| Beam Centers, Horizontal, degrees | | | | ±27 | ±27 | ±27 | | | |
| Beamwidth, Horizontal, degrees | 63 | 65 | 61 | 34 | 31 | 25 | 67 | 64 | 61 |
| Beamwidth, Vertical, degrees | 8.7 | 7.8 | 7.2 | 7.5 | 6.7 | 5.6 | 6.2 | 5.6 | 4.7 |
| Beam Tilt, degrees | 2–12 | 2–12 | 2–12 | 2–12 | 2–12 | 2–12 | 2–12 | 2–12 | 2–12 |
| USLS (First Lobe), dB | 15 | 17 | 17 | 16 | 17 | 17 | 16 | 15 | 16 |
| Front-to-Back Ratio at 180°, dB | 30 | 28 | 27 | 36 | 35 | 32 | 34 | 36 | 29 |
| Isolation, Cross Polarization, dB | 28 | 28 | 28 | 25 | 25 | 25 | 28 | 28 | 28 |
| Isolation, Inter-band, dB | 28 | 28 | 28 | 28 | 28 | 28 | 28 | 28 | 28 |
| Isolation, Beam to Beam, dB | | | | 17 | 17 | 17 | | | |
| VSWR Return loss, dB | 1.5 14.0 | 1.5 14.0 | 1.5 14.0 | 1.5 14.0 | 1.5 14.0 | 1.5 14.0 | 1.5 14.0 | 1.5 14.0 | 1.5 14.0 |
| PIM, 3rd Order, 2 x 20 W, dBc | -150 | -150 | -150 | -150 | -150 | -150 | -150 | -150 | -150 |
| Input Power per Port at 50°C, maximum, watts | 300 | 300 | 300 | 250 | 250 | 250 | 250 | 250 | 250 |

Mechanical Specifications

| | |
|---|---|
| Wind Loading @ Velocity, frontal | 1,070.0 N @ 150 km/h (240.5 lbf @ 150 km/h) |
| Wind Loading @ Velocity, lateral | 375.0 N @ 150 km/h (84.3 lbf @ 150 km/h) |
| Wind Loading @ Velocity, maximum | 1,385.0 N @ 150 km/h (311.4 lbf @ 150 km/h) |
| Wind Loading @ Velocity, rear | 880.0 N @ 150 km/h (197.8 lbf @ 150 km/h) |
| Wind Speed, maximum | 241 km/h (150 mph) |

Packaging and Weights

RVV2VV-6533D-R7

| | |
|-----------------------|----------------------|
| Width, packed | 565 mm 22.244 in |
| Depth, packed | 309 mm 12.165 in |
| Length, packed | 2935 mm 115.551 in |
| Weight, gross | 76.3 kg 168.213 lb |

Regulatory Compliance/Certifications

| Agency | Classification |
|---------------|--|
| CHINA-ROHS | Below maximum concentration value |
| ISO 9001:2015 | Designed, manufactured and/or distributed under this quality management system |
| REACH-SVHC | Compliant as per SVHC revision on www.commscope.com/ProductCompliance |
| ROHS | Compliant |
| UK-ROHS | Compliant |



Included Products

| | | |
|-----------|---|--|
| BSAMNT-4 | - | Wide Profile Antenna Downtilt Mounting Kit for 2.4 - 4.5 in (60 - 115 mm) OD round members. Kit contains one scissor top bracket set and one bottom bracket set. |
| BSAMNT-M4 | - | Middle Downtilt Mounting Kit for Long Antennas for 2.4 - 4.5 in (60 - 115 mm) OD round members. Kit contains one scissor bracket set. |

* Footnotes

| | |
|-------------------------|---|
| Performance Note | Severe environmental conditions may degrade optimum performance |
|-------------------------|---|

BSAMNT-4



Wide Profile Antenna Downtilt Mounting Kit for 2.4 - 4.5 in (60 - 115 mm) OD round members. Kit contains one scissor top bracket set and one bottom bracket set.

Product Classification

Product Type Downtilt mounting kit

General Specifications

Application Outdoor

Color Silver

Dimensions

Compatible Diameter, maximum 115 mm | 4.528 in

Compatible Diameter, minimum 60 mm | 2.362 in

Weight, net 6.5 kg | 14.33 lb

Material Specifications

Material Type Galvanized steel

Packaging and Weights

Included Brackets | Hardware

Packaging quantity 1

Regulatory Compliance/Certifications

| Agency | Classification |
|---------------|--|
| CHINA-ROHS | Below maximum concentration value |
| ISO 9001:2015 | Designed, manufactured and/or distributed under this quality management system |
| REACH-SVHC | Compliant as per SVHC revision on www.commscope.com/ProductCompliance |
| ROHS | Compliant |
| UK-ROHS | Compliant |



BSAMNT-M4



Middle Downtilt Mounting Kit for Long Antennas for 2.4 - 4.5 in (60 - 115 mm) OD round members. Kit contains one scissor bracket set.

Product Classification

Product Type Downtilt mounting kit

General Specifications

Application Outdoor

Color Silver

Dimensions

Compatible Diameter, maximum 115 mm | 4.528 in

Compatible Diameter, minimum 60 mm | 2.362 in

Weight, net 4.6 kg | 10.141 lb

Material Specifications

Material Type Galvanized steel

Packaging and Weights

Included Brackets | Hardware

Packaging quantity 1

Regulatory Compliance/Certifications

| Agency | Classification |
|---------------|--|
| CHINA-ROHS | Below maximum concentration value |
| ISO 9001:2015 | Designed, manufactured and/or distributed under this quality management system |
| REACH-SVHC | Compliant as per SVHC revision on www.commscope.com/ProductCompliance |
| ROHS | Compliant |
| UK-ROHS | Compliant |

