

TC-96298-IP
 Rev A, October 2020
 www.commscope.com

SC/APC FTTH Field-Installable Connector

These installation instructions provide termination procedures for the SC/APC FTTH field-installable connector on SM 3.0 x 2.0mm Fig-8 drop cable. A basic understanding of fiber handling, stripping, and cleaning will be helpful.

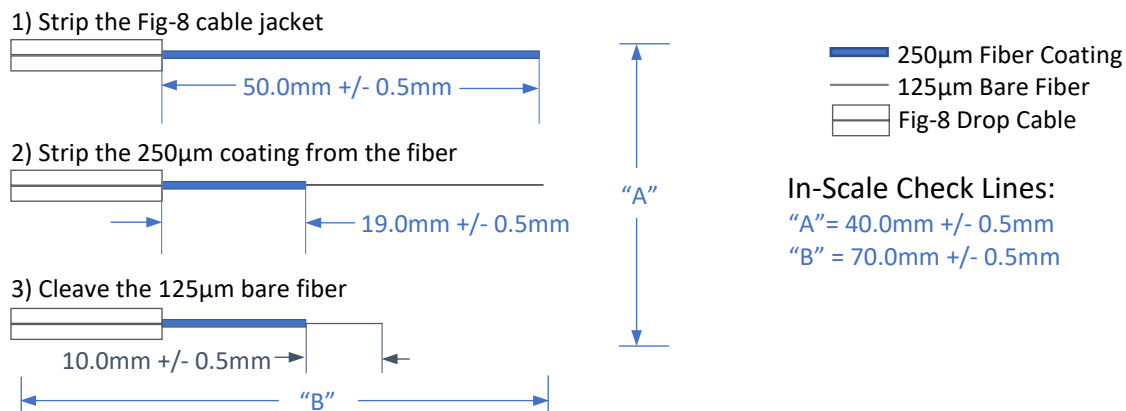
Notes:

- **Wear safety glasses** when handling optical fibers.
- **Never look into the end of an optical fiber** that may have any visual fault locator coupled to it.
- **Keep the parts clean.** Use a clean working area and keep the parts in the package until use.
- **Keep the tools clean.** Buildup of fragments on the strip tool, or cleaver will result in poor performance.

Tools:



Strip Length Template (Illustrations to scale):



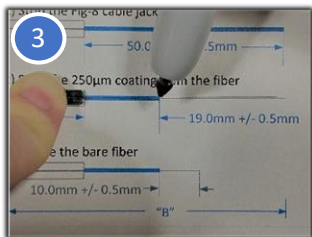
3.0 x 2.0 mm Fig-8 Drop Cable Termination:



(1) Slide boot onto the cable as shown



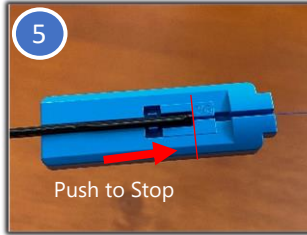
(2) Strip the jacket to 50mm using the **drop cable stripper**



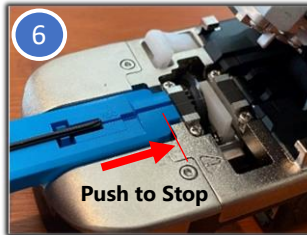
(3) Reference the **Strip Length Template** on the connector bag or page 1 of this document. Mark at 19mm strip mark and strip the 250µm coating



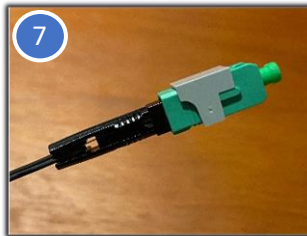
(4) Clean the fiber with a lint free wipe moistened with fiber optic cleaning fluid. Check the fiber integrity by bending the stripped end slightly at 30°



(5) Insert the cable into the **cleave length jig** as forward as possible



(6) Insert the length jig into the **cleaver** as forward as possible and cleave the fiber.



(7) Insert the cleaved fiber into the rear of the connector, following the guide on the bottom side to ensure easy and contamination free insertion. Make a slight bend in the fiber to maintain connection



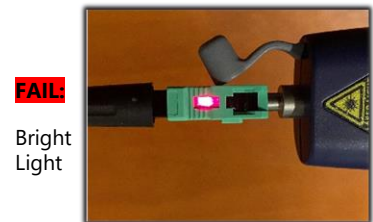
(8) Remove the aid clip from the connector, locking the splice in place. Save the clip to reuse the connector later.



(9) Straighten the fiber, taking care not to pull back on the fiber. Thread the boot onto the back of the connector until hand tight. Termination is complete.

Installation Check:

Using a VFL, verify that the red light in the splice window is dimmed, signaling a correct fiber mating is achieved. If the window is bright, light is escaping, and the fiber needs to be re-installed or re-cleaved.

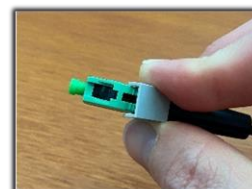


FAIL:
Bright Light



PASS:
Dim Light

Re-installation Process:



- 1: Insert aid clip onto the splice window
- 2: Release the boot and remove the fiber from the connector
- 3: Repeat installation process