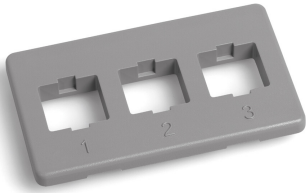


108564691 | M13CLS-270



Flexible Faceplate with Single Gang Frame, gray

- Available for use with the DYMO® labeling solution

OBSOLETE

This product was discontinued on: **May 29, 2020**

Replaced By:

106701154
M13C-270

M13C Type Furniture Faceplate, three port gray

Product Classification

Regional Availability	Asia Australia/New Zealand EMEA Latin America North America
Portfolio	CommScope®
Product Type	Faceplate kit

General Specifications

Application	Flush mounted triplex modular faceplates designed to fit modular furniture raceway covers
Color	Gray
Mounting	Flush
Total Ports, quantity	3

Dimensions

Height	46.736 mm 1.84 in
Compatible Knockout Width	68.834 mm 2.71 in
Width	79.502 mm 3.13 in
Depth	7.366 mm 0.29 in
Compatible Knockout Height	35.052 mm 1.38 in
Compatible Knockout Tolerance	±.01 in

Material Specifications

Material Type	High-impact, flame retardant, thermoplastic
----------------------	---

Environmental Specifications

Flammability Rating	UL 94 V-0
Safety Standard	UL cUL

Packaging and Weights

Packaging quantity	1
Weight, net	0.023 kg 0.05 lb

Regulatory Compliance/Certifications

Agency	Classification
CHINA-ROHS	Below maximum concentration value
ISO 9001:2015	Designed, manufactured and/or distributed under this quality management system
REACH-SVHC	Compliant as per SVHC revision on www.commscope.com/ProductCompliance
ROHS	Compliant
UK-ROHS	Compliant

