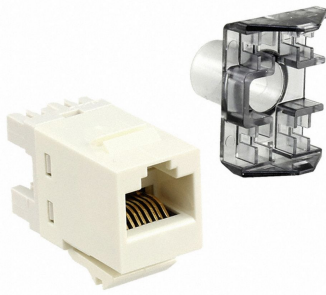


# 1-1375055-3



SL110 Series Modular Jack, RJ45, category 6, T568A/T568B, unshielded, without dust cover, alpine white

## Product Classification

**Regional Availability**

Asia | Australia/New Zealand | EMEA | Latin America

**Portfolio**

NETCONNECT®

**Product Type**

Modular jack

**Product Series**

SL Series

## General Specifications

**ANSI/TIA Category**

6

**Cable Type**

Unshielded

**Color**

White

**Conductor Type**

Solid | Stranded

**Mounting**

SL Series faceplates and panels

**Mounting Note**

Color matches with SL-style Alpine White or Pro White Faceplates and Surface Mount Boxes

**Outlet Feature**

Inverted jack face

**Outlet Type**

Standard

**Panel Cutout, recommended**

14.78 x 20.07 mm (0.58 x 0.79 in)

**Termination Punchdowns, minimum**

200 times

**Termination Tool**

SL Termination tool

**Termination Type**

IDC

**Transmission Standards**

ANSI/TIA-568.2-D | ISO/IEC 11801 Class E

**Wiring**

T568A | T568B

## Dimensions

**Height**

16.13 mm | 0.635 in

# 1-1375055-3

---

<b>Width</b>	14.48 mm   0.57 in
<b>Depth</b>	30.48 mm   1.2 in
<b>Compatible Cable Diameter, maximum</b>	5.8 mm   0.228 in
<b>Compatible Insulated Conductor Diameter, maximum</b>	1.45 mm   0.057 in
<b>Contact Plating Thickness</b>	1.27 $\mu$ m
<b>Panel Thickness, recommended</b>	1.6 mm   0.063 in
<b>Compatible Conductor Gauge, solid</b>	24–22 AWG
<b>Compatible Conductor Gauge, stranded</b>	26–24 AWG

## Electrical Specifications

<b>Contact Resistance Variation, maximum</b>	20 mOhm
<b>Contact Resistance, maximum</b>	100 mOhm
<b>Current Rating at Temperature</b>	1.5 A @ 20 °C   1.5 A @ 68 °F
<b>Dielectric Withstand Voltage, RMS, conductive surface</b>	1,500 Vac @ 60 Hz
<b>Dielectric Withstand Voltage, RMS, contact-to-contact</b>	1,000 Vac @ 60 Hz
<b>Insulation Resistance, minimum</b>	500 mOhm
<b>Remote Powering</b>	Fully supports the safe delivery of power over LAN cabling described by IEEE 802.3bt (Type 4) and complies with the unmating under electrical load requirements prescribed by IEC 60512-99-002
<b>Safety Voltage Rating</b>	150 Vac

## Material Specifications

<b>Contact Base Material</b>	Beryllium copper
<b>Contact Plating Material</b>	Gold
<b>Material Type</b>	Polycarbonate
<b>Termination Contact Plating</b>	Tin

## Mechanical Specifications

<b>Plug Insertion Life, minimum</b>	750 times
<b>Plug Insertion Life, test plug</b>	IEC 60603-7 compliant plug
<b>Plug Retention Force, minimum</b>	50 N   11.24 lbf

## Environmental Specifications

<b>Operating Temperature</b>	-10 °C to +60 °C (+14 °F to +140 °F)
------------------------------	--------------------------------------

# 1-1375055-3

---

<b>Flammability Rating</b>	UL 94 V-0
<b>Safety Standard</b>	UL   cUL
<b>Packaging and Weights</b>	
<b>Included</b>	Strain relief cap
<b>Packaging quantity</b>	1
<b>Packaging Type</b>	Bag

## Regulatory Compliance/Certifications

<b>Agency</b>	<b>Classification</b>
CHINA-ROHS	Below maximum concentration value
RCM	Compliant to electrical safety, EMC, EME & telecommunications requirements
REACH-SVHC	Compliant as per SVHC revision on <a href="http://www.commscope.com/ProductCompliance">www.commscope.com/ProductCompliance</a>
ROHS	Compliant

