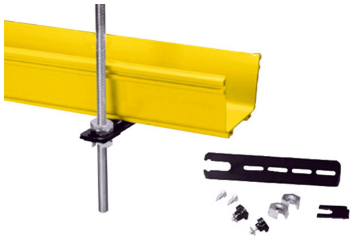


# FGS-HETR-16MM

---



FiberGuide® Existing Rod Bracket, 16mm for 2x6, 4x4, 4x6in Systems

## Product Classification

<b>Regional Availability</b>	Asia   Australia/New Zealand   EMEA   Latin America   North America
<b>Portfolio</b>	CommScope®
<b>Product Type</b>	Support mounting kit
<b>Product Brand</b>	FiberGuide®
<b>Product Series</b>	FGS

## General Specifications

<b>Color</b>	Black
<b>Orientation</b>	Horizontal
<b>Section Type</b>	Bracket
<b>Bracket Type</b>	Cantilever
<b>Bracket Installation Type</b>	Existing
<b>Attachment Type</b>	Threaded rod

## Dimensions

<b>Height</b>	156 mm   6.142 in
<b>Width</b>	51 mm   2.008 in
<b>Length</b>	268 mm   10.551 in
<b>Thread Size</b>	16 mm
<b>System Dimensions</b>	102 mm x 102 mm (4 in x 4 in)   102 mm x 152 mm (4 in x 6 in)   51 mm x 152 mm (2 in x 6 in)

## Ordering Tree

# FGS-HETR-16MM

FGS - HETR - F - 5/8

## For Section Size

9	empty	4 x 4 in, 4 x 6 in
	F	4 x 12 in

## For Threaded Rod Size

10	1/2	1/2 in
	12MM	12 mm
	16MM	16 mm
	3/8	3/8 in
	5/8	5/8 in
	5/8-A	5/8 in, modified

## Packaging and Weights

**Weight, net** 1.487 kg | 3.278 lb

## Regulatory Compliance/Certifications

### Agency

CHINA-ROHS  
REACH-SVHC  
ROHS  
UK-ROHS

### Classification

Below maximum concentration value  
Compliant as per SVHC revision on [www.commscope.com/ProductCompliance](http://www.commscope.com/ProductCompliance)  
Compliant  
Compliant

