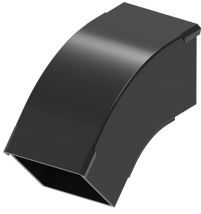


FGSB-MD4A-C



FiberGuide® 45° Down Elbow, 2x2in, Black

Product Classification

Regional Availability	Asia Australia/New Zealand EMEA Latin America North America
Portfolio	CommScope®
Product Type	Elbow
Product Brand	FiberGuide®
Product Series	FGS

General Specifications

Product Feature	Snap-together design
Angle/Bend Direction	90° down
Color	Black
Orientation	Horizontal
Section Type	Elbow section

Dimensions

System Dimensions	51 mm x 51 mm (2 in x 2 in)
--------------------------	-----------------------------

Material Specifications

Material Type	Engineering Thermoplastic
----------------------	---------------------------

Environmental Specifications

Flammability Rating	CSA S143 UL 2024 UL 94 V-0
Halogen Characteristics	Blue Angel TCO '99 WEEE
Safety Standard	CSA UL

Regulatory Compliance/Certifications

Agency	Classification
CHINA-ROHS	Below maximum concentration value

FGSB-MD4A-C

REACH-SVHC	Compliant as per SVHC revision on www.commscope.com/ProductCompliance
ROHS	Compliant
UK-ROHS	Compliant

