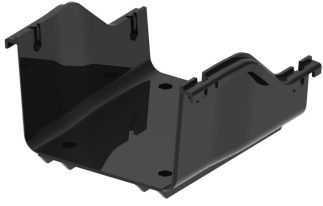


# FGSB-MDSA-GB

---



FiberGuide® Reducer, 4x6 to 2x6in, Black

## Product Classification

|                              |   |
|------------------------------|---|
| <b>Regional Availability</b> | Asia   Australia/New Zealand   EMEA   Latin America   North America |
| <b>Portfolio</b>             | CommScope®  |
| <b>Product Type</b>          | Reducer   |
| <b>Product Brand</b>         | FiberGuide®   |
| <b>Product Series</b>        | FGS   |

## General Specifications

|                     |            |
|---------------------|------------|
| <b>Color</b>        | Black      |
| <b>Orientation</b>  | Horizontal |
| <b>Section Type</b> | Reducer    |

## Dimensions

|                          |  |
|--------------------------|--|
| <b>System Dimensions</b> | 102 mm x 152 mm (4 in x 6 in)   51 mm x 152 mm (2 in x 6 in) |
|--------------------------|--|

## Ordering Tree

# FGSB-MDSA-GB



## Section Color

|   |       |        |
|---|-------|--------|
| 9 | empty | yellow |
|   | B     | black  |

## Section Size

|    |      |                                       |
|----|------|---------------------------------------|
| 10 | AB   | 4 x 4 in to 4 x 6 in                  |
|    | AC   | 4 x 4 in to 2 x 2 in                  |
|    | C2C  | 2 x 2 in to dual 2 x 2 in             |
|    | F2B  | 4 x 12 in to dual 4 x 6 in            |
|    | FB   | 4 x 4 in to 4 x 6 in                  |
|    | FB-L | 4 x 12 in to left 4 x 6 in , black*   |
|    | FB-R | 4 x 12 in to right 4 x 6 in , black*  |
|    | HF-L | 4 x 24 in to left 4 x 12 in , black*  |
|    | HF-R | 4 x 24 in to right 4 x 12 in , black* |
|    | HF   | 4 x 24 in to 4 x 12 in                |
|    | GA   | 2 x 6 in to 4 x 4 in                  |
|    | GB   | 2 x 6 in to 4 x 6 in                  |

\* Only comes in black

## Material Specifications

**Material Type** Engineering Thermoplastic

## Environmental Specifications

**Flammability Rating** CSA S143 | UL 2024 | UL 94 V-0

**Halogen Characteristics** Blue Angel | TCO '99 | WEEE

**Safety Standard** CSA | UL

## Packaging and Weights

**Weight, net** 0.282 kg | 0.622 lb

## Regulatory Compliance/Certifications

### Agency

### Classification

CHINA-ROHS

Below maximum concentration value

REACH-SVHC

Compliant as per SVHC revision on [www.commscope.com/ProductCompliance](https://www.commscope.com/ProductCompliance)

ROHS

Compliant

UK-ROHS

Compliant

