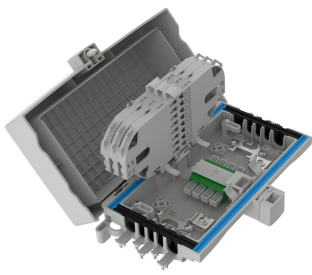


# SEC4-A3C1D3BA000



NOVUX™ SEC Closure, splice/patch, 4x SC/APC adapter, 1x factory-installed 1:4 SC/APC Grade B pre-connectorized splitter, mounting included, gray

- Design optimized for FTTH façade applications with gray and black colors
- Agnostic to connectivity technologies: splice, connector, field-installable connector for agility and flexibility
- Innovative removable hinge design allows cover to open from the left, right, or top
- Identification plate for either QR code or customer logo
- QR code and CommScope cTrak® app for one-click access to all product information

## Product Classification

Regional Availability	EMEA
Regional Availability Note	Contact your local CommScope representative for specific availability
Product Type	In-line, rectangular fiber closure
Product Brand	NOVUX™
Product Series	SEC100

## General Specifications

Cable Capacity, Branch	2 Round 1.8–7.0 mm (0.07–0.27 in)
Cable Capacity, Drop	6 Round 1.8–7.0 mm (0.07–0.27 in)
Cable Capacity, Feeder	2 Round 9.0–12.0 mm (0.35–0.47 in)
Cable Ports Quantity, total	10 round ports
Cable Sealing Type	Gasket/grommet configuration
Closure Sealing Type	Hinged with lock
Closure Style	In-line
Color	Gray
Mounting	Facade   Wall
Network Area Type	Drop
Port Type	SC/APC
Port, quantity	4
Splice Tray Included, quantity	3
Splice Tray Type Included	12-way, heat shrink
Splices per Tray, quantity	12

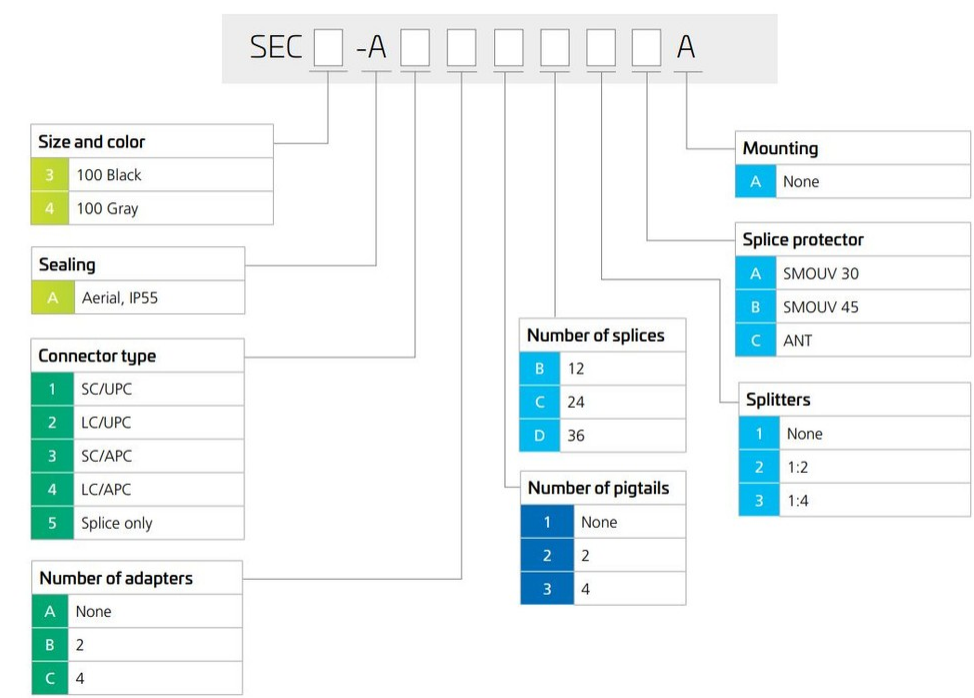
# SEC4-A3C1D3BA000

Splicing Capacity, maximum	28
Splicing Capacity, Single Fusion, maximum	28
Splicing Type, Supported	Single fusion
Splitter Type	1 x 4
Splitter, quantity	1

## Dimensions

Height	117 mm   4.606 in
Width	210 mm   8.268 in
Depth	75 mm   2.953 in

## Ordering Tree



## Optical Specifications

Fiber Type	G.657.A1   G.657.A2   G.657.B3
------------	--------------------------------

## Environmental Specifications

Environmental Space	Facade   Outdoor
---------------------	------------------

# SEC4-A3C1D3BA000

Qualification Standards	IP55
UV Resistance	UV stabilized
Packaging and Weights	
Included	1x factory-installed 1:4 SC/APC Grade B pre-connectorized splitter
Packaging quantity	1
Packaging Type	Box   Carton

## Regulatory Compliance/Certifications

Agency	Classification
CHINA-ROHS	Above maximum concentration value
ISO 9001:2015	Designed, manufactured and/or distributed under this quality management system
ROHS	Compliant/Exempted
UK-ROHS	Compliant/Exempted

