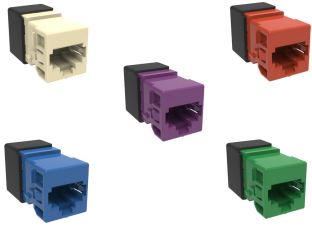


Base Product



M-Series Modular Jack, RJ45, Cat6A Unshielded

Product Classification

| | |
|------------------------------|---------------|
| Regional Availability | North America |
| Portfolio | Uniprise® |
| Product Type | Modular jack |
| Product Series | UNJ Series |

General Specifications

| | |
|-------------------------------|---|
| ANSI/TIA Category | 6A |
| Cable Type | Unshielded |
| Conductor Type | Solid Stranded |
| Mounting | M Series faceplates and panels |
| Outlet Type | Standard |
| Termination Tool | SL Termination tool |
| Termination Type | IDC |
| Transmission Standards | ANSI/TIA-568.2-D ISO/IEC 11801 Class EA |
| Wiring | T568A T568B |

Dimensions

| | |
|---|-----------------------------------|
| Panel Cutout, recommended | 16.66 x 17.68 mm (0.66 x 0.70 in) |
| Panel Thickness, recommended | 1.6 mm 0.063 in |
| Height | 17.48 mm 0.688 in |
| Width | 16.5 mm 0.65 in |
| Depth | 30.48 mm 1.2 in |
| Compatible Cable Diameter, maximum | 7.24 mm 0.285 in |
| Compatible Insulated Conductor Diameter, maximum | 1.45 mm 0.057 in |
| Contact Plating Thickness | 1.27 µm |

UNJ10G

Compatible Conductor Gauge, solid 24–22 AWG

Compatible Conductor Gauge, stranded 26–24 AWG

Electrical Specifications

Remote Powering Fully supports the safe delivery of power over LAN cabling described by IEEE 802.3bt (Type 4) and complies with the unmating under electrical load requirements prescribed by IEC 60512-99-002

PoE Durability Supports IEEE 802.3bt Type 4 (90 W) applications after 3000 plug to jack mating cycles

Material Specifications

Contact Base Material Beryllium copper

Contact Plating Material Gold

Material Type Copper alloy | High-impact, flame retardant, thermoplastic | Polycarbonate

Mechanical Specifications

Plug to Jack Mating Cycles Complies to IEC 60603-7 series

Environmental Specifications

Operating Temperature -10 °C to +60 °C (+14 °F to +140 °F)

Storage Temperature -40 °C to +70 °C (-40 °F to +158 °F)

Flammability Rating UL 94 V-0