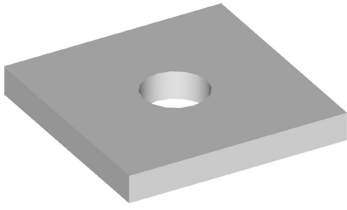


# BP-06

---



Backing Plate, 6 in x 6 in x 1/4 in, 5/8 in hardware

- This item is now available as a custom product and is made to order

## Product Classification

**Product Type** Backing plate

## Dimensions

**Height** 25.4 mm | 1 in

**Width** 152.4 mm | 6 in

**Length** 152.4 mm | 6 in

**Material Thickness** 7.62 mm | 0.3 in

## Material Specifications

**Material Type** Hot dip galvanized steel

## Packaging and Weights

**Included** Backing plate

**Packaging quantity** 1

**Weight, net** 1.2 kg | 2.646 lb

## Regulatory Compliance/Certifications

Agency	Classification
CHINA-ROHS	Above maximum concentration value
ROHS	Compliant/Exempted
UK-ROHS	Compliant/Exempted

