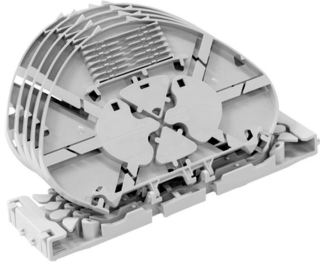


CS8893-000 | FIST-SOSA2-5SE-A



FIST® Splice Sub-assembly kit with 5 trays, each for holding up to 12 primary or 4 secondary coated fibers, with ANT type splice holder

- Splice sub-assemblies consists of a wraparound groove plate holding the included splice organizer trays
- Groove plates are designed with slots for routing fiber to and from the organizer trays
- Loop-back facility allowing for single circuit uncut looped fiber storage on the splice tray
- Compliant with most splice types and independent of any optical fiber construction

Product Classification

Regional Availability	EMEA
Product Type	Fiber splice tray
Product Brand	FIST®
Product Series	FIST-SOSA2

General Specifications

Application	For use with BUDI fiber wall boxes For use with FIST fiber splice closures For use with FIST fiber splice panels
Color	Gray
Splice Tray Chip Type	ANT
Splice Tray Construction	SE (for up to 12 primary or 4 secondary coated fibers)
Splice Tray Included, quantity	5
Splices per Tray, note	12 splices (250µm) per tray (16 for the RED SMOUV Splice tray)
Splices per Tray, quantity	12
Used UMS Units, quantity	2

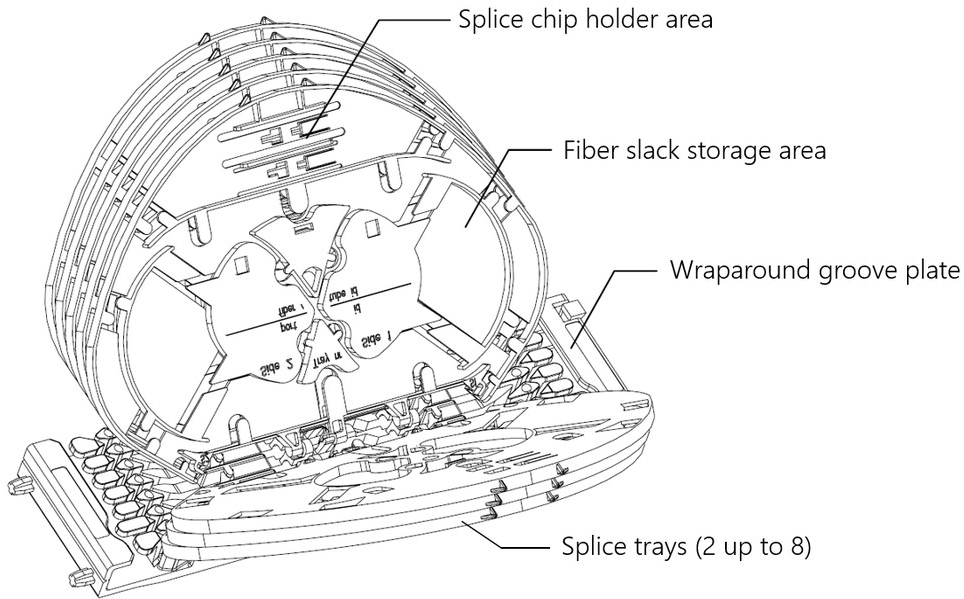
Dimensions

Height	8 mm 0.315 in
Width	103.5 mm 4.075 in
Length	152 mm 5.984 in
Fiber Storage Length, maximum	1500 mm for 900 µm fibers 1500 mm for mixed 250/900 µm fibers 2050 mm for 250 µm fibers
Fiber Storage Length, minimum	650 mm 25.591 in
Splice Protector Length, maximum	45 mm 1.772 in

CS8893-000 | FIST-SOSA2-5SE-A

Splice Protector Length, minimum	45 mm 1.772 in
Splice Protector Diameter, maximum	2.8 mm 0.11 in
Splice Protector Diameter, minimum	2.2 mm 0.087 in

Dimension Drawing



Material Specifications

Material Type	PBT PET
----------------------	-----------

Mechanical Specifications

Minimum Bend Radius, standard	30 mm 1.181 in
--------------------------------------	------------------

Environmental Specifications

Storage Temperature	-40 °C to +70 °C (-40 °F to +158 °F)
Relative Humidity	93%, non-condensing
Environmental Space	Indoor Outdoor

Packaging and Weights

Packaging quantity	1
Packaging Type	Bag Carton
Weight, net	0.1 kg 0.22 lb

Regulatory Compliance/Certifications

Agency	Classification
CHINA-ROHS	Below maximum concentration value
REACH-SVHC	Compliant as per SVHC revision on www.commscope.com/ProductCompliance
ROHS	Compliant
UK-ROHS	Compliant



* Footnotes

Used UMS Units, quantity The overall space consumed in the Universal Mounting System (UMS) frame is expressed in UMS units. One UMS unit equals 6 mm.