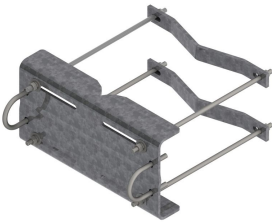


MDL-SS-B



Tower Leg Microwave Antenna Channel Support Kit

Product Classification

Product Type Microwave strut support

General Specifications

Mounting Straight or tapered legs up to 406.4 mm (16 in) OD

Tower Taper Non-tapered

Dimensions

Height 203.2 mm | 8 in

Width 304.8 mm | 12 in

Length 304.8 mm | 12 in

Mounting Diameter, maximum 406.4 mm | 16 in

Material Specifications

Material Type Hot dip galvanized steel

Packaging and Weights

Included Attachment hardware | Clamps

Packaging quantity 1

Weight, net 31.7 kg | 69.886 lb