

# MF-273

---



Direct Burial Pipe Column, 15 ft 4 in

## Product Classification

**Product Type** Pipe column

## General Specifications

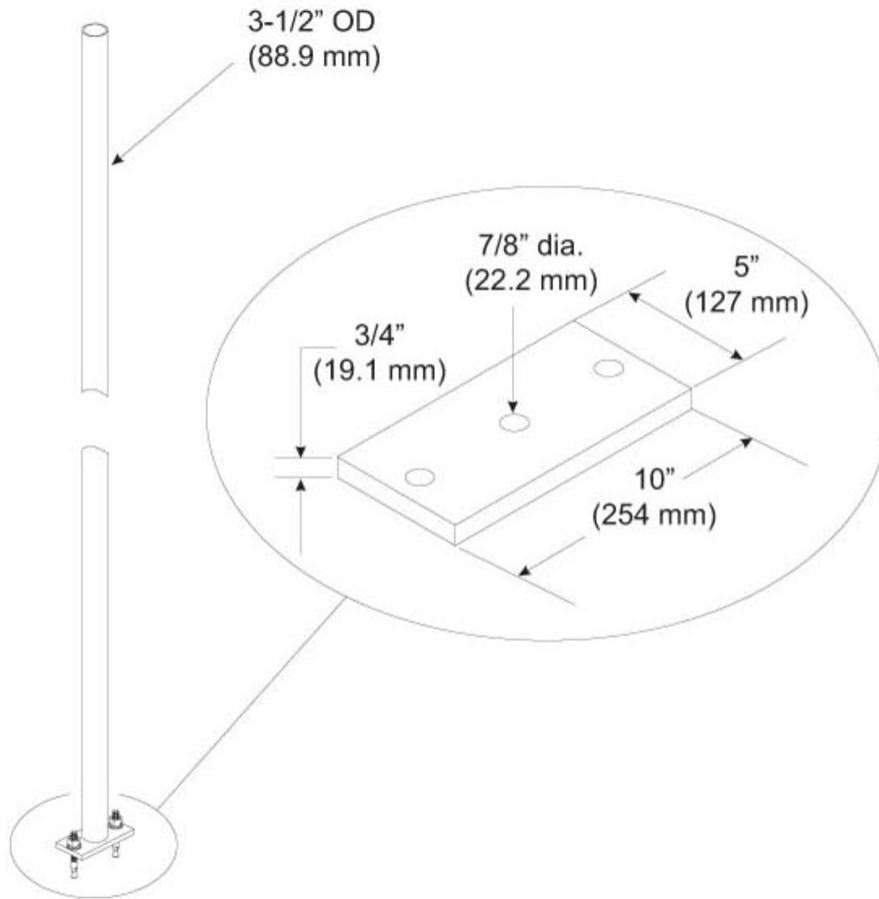
**Application** Direct burial  
**Mounting** Waveguide bridge support bracket  
**Pipe, quantity** 1

## Dimensions

**Height** 4,673.6 mm | 184 in  
**Width** 88.9 mm | 3.5 in  
**Length** 88.9 mm | 3.5 in  
**Pipe Length** 4,663.44 mm | 183.6 in  
**Pipe Outer Diameter** 88.9 mm | 3.5 in

# MF-273

## Outline Drawing



## Material Specifications

**Material Type** Hot dip galvanized steel

## Packaging and Weights

**Included** Anchors | Pipe

**Packaging quantity** 1

**Weight, net** 52.6 kg | 115.963 lb

## Regulatory Compliance/Certifications

**Agency** **Classification**

# MF-273

---

CHINA-ROHS	Above maximum concentration value
ISO 9001:2015	Designed, manufactured and/or distributed under this quality management system
ROHS	Compliant/Exempted
UK-ROHS	Compliant/Exempted



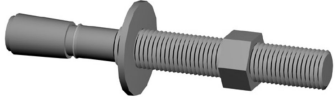
## Included Products

MT-287 – Wedge Anchor, 3/4 in x 7 in

# MT-287

---

Wedge Anchor, 3/4 in x 7 in



## Product Classification

**Product Type** Anchor

## Dimensions

**Height** 25.4 mm | 1 in

**Width** 25.4 mm | 1 in

**Length** 177.8 mm | 7 in

**Pipe Outer Diameter** 20.32 mm | 0.8 in

## Material Specifications

**Material Type** Plated steel

## Packaging and Weights

**Included** Anchors

**Packaging quantity** 1

## Regulatory Compliance/Certifications

Agency	Classification
ISO 9001:2015	Designed, manufactured and/or distributed under this quality management system