



FTTH Drop Cabinet

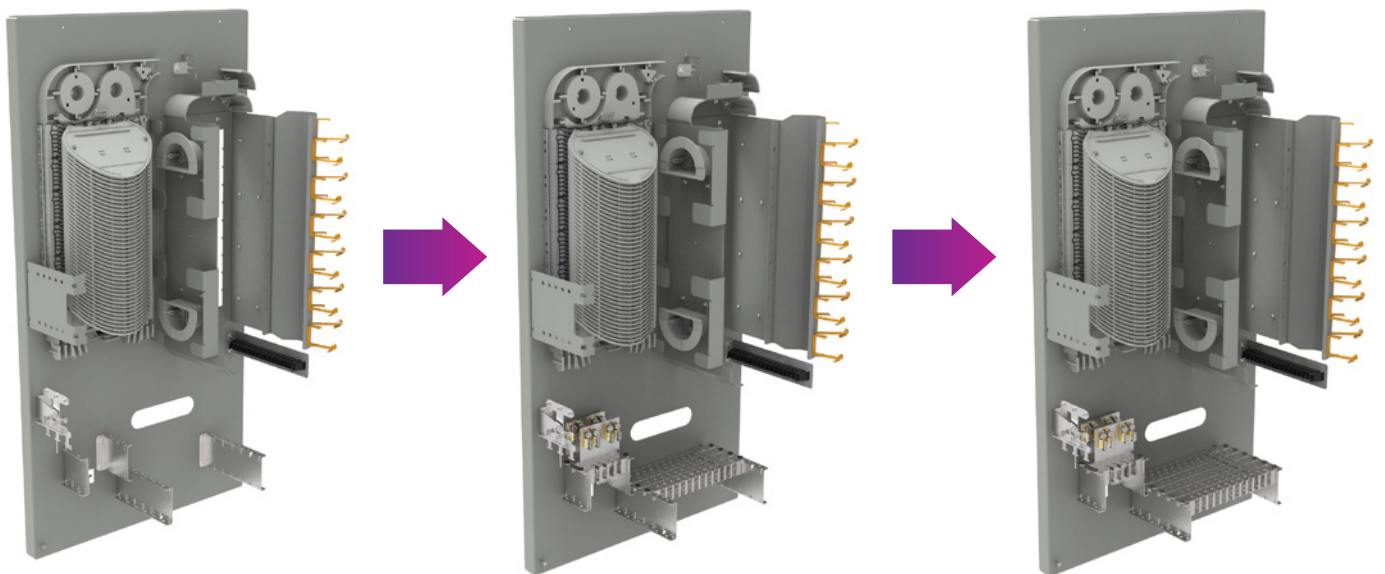
for 48f up to 96f customer connections

COMMSCOPE®

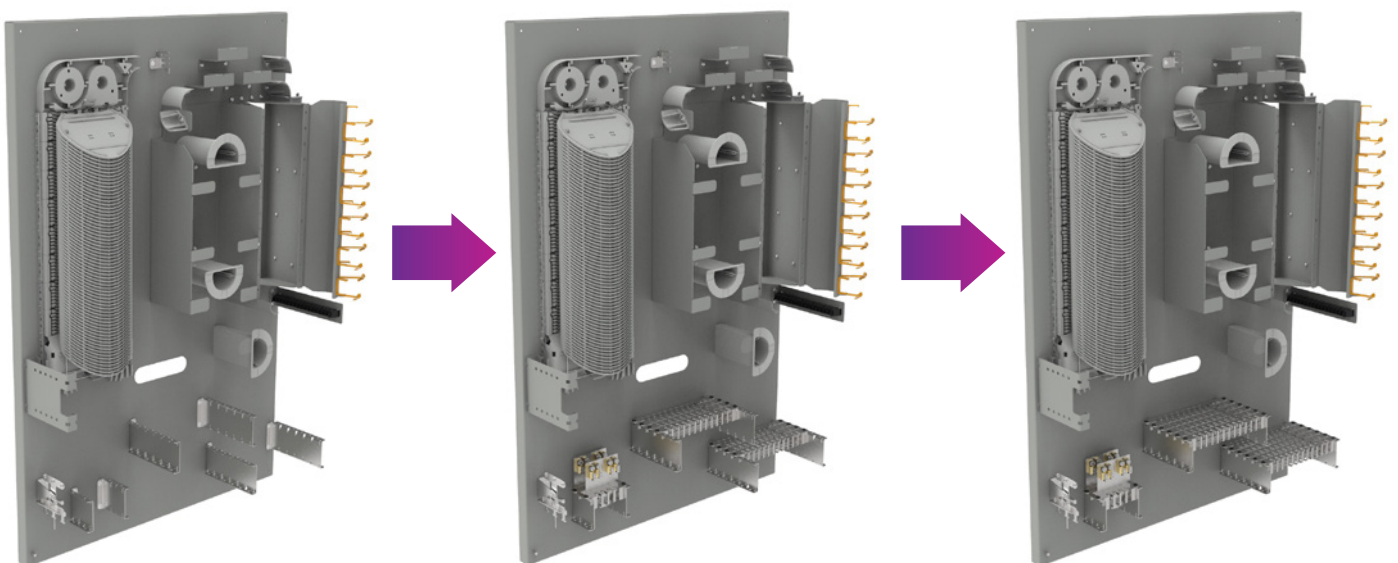
FTTH Drop Cabinet is designed for outdoor applications (IP54) and needs to be placed on an in-ground root or concrete pre-fabricated base. Cabinet has a robust construction, coupled with a variety of vandal resistant features. Cabinets are supplied fully assembled ready for immediate deployment.

Two cabinet sizes cover a range of drops from 48f to 144f drops. The cabinet is highly configurable with splice trays, LGX splitter modules, and options for both microduct and cable installations. Both cabinet sizes are compact and single doored. The fibre routing is simple and logical, offers high usable density, and is designed around regular accessibility.

Upgrade path 48f → 72f



Upgrade path 96f → 144f



CABINET SPECIFICATION

- External dimensions, 4 different sizes (including 90mm apex roof):

Customer connections	High (mm)	Width (mm)	Depth (mm)
48f up to 72f	981.4	535	314.5
48f up to 72f	981.4	535	250
96f up to 144f	981.4	780	314.5
96f up to 144f	981.4	780	250

- Material: 1.4003 grade stainless steel, fully welded construction
- Finish: polyester powder coat, BS381C SHADE 223 'Bronze Green' or RAL 7035 "Light Grey", smooth texture
- Single door with removable LH lift-off type hinges and 2-point locking from barrel type lock
- Roof overhangs door front face by 15mm
- Ventilation louvres in cabinet door
- Designed to meet IP54 with optional filter media fitted behind louvres
- Backboard sets into a "U" channel at the bottom of cab, secured with two swing latches at top
- 3 hank bushes on each internal side for fixing of fibre basket(s)
- All parts fully earth bonded with 4mm² earth cables

INGROUND ROOT

- 280 mm high with open front
- Neoprene gasket seal on top face where cabinet will join

OPTIONAL UPGRADE FOR ANTI-GRAFFITI PAINT FINISH POLYSTYRENE INSULATION

- For increased resistance to internal dew condensation
- Fitted to door and roof

PACKAGING AND DELIVERIES

- Cabinets supplied stacked 8 per pallet and shrink wrapped in polythene
- All roots bulk packaged without protective material, 40 per pallet and shrink wrapped in polythene



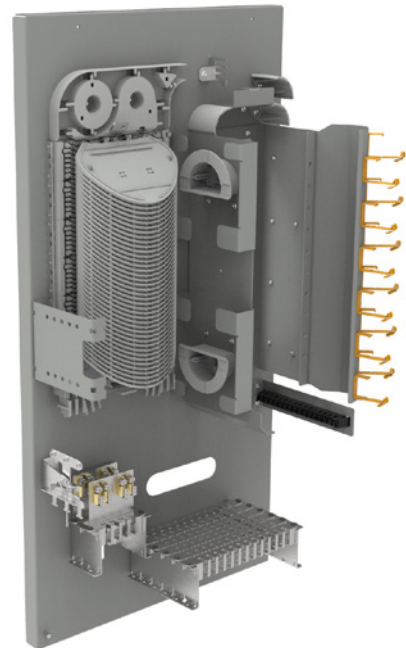
FTTH Cabinet inner-work for 72f & 144f customer connections

The cabinet system offers 72 LC/APC Simplex connections in a point to multipoint application in FIST™ transient-free management system. The cabinet is supplied with no splitters for homes passed application. The splitter modules can be orderd separately from our wide OCM1 LGX Style Fiber Optic Splitter Modules portfolio. Maximal splitting ration is N:32. The cabinet solution offers a parking lot for future customer activation by simple snapping the OCM1 LGX splitter module in the mounting position.

FEATURES:

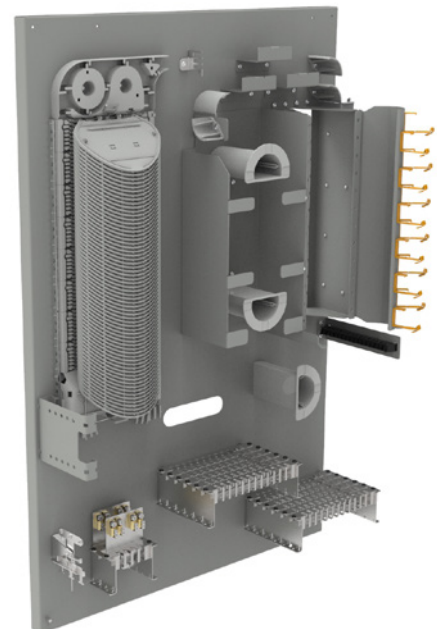
Drop cabinet for up to 72f customer connections

- 48 up to 72 Point-to-multipoint positions, SC & LC footprint
- 8 branch-off blown fiber Ø5,7& 8mm micro tube positions
- 4 branch-off blown fiber Ø 12mm micro tube positions
- 72 direct drop blown fiber Ø5,7 & 8mm micro tube positions
- 10 OCM1 LGX Style Fiber Optic Splitter Module positions
- Transient-free, modular, flexible fiber management ·
- FIST single-circuit and single-element splice trays
- Up to 480 splices (including SC trays 160splices)
- Storage area for looped cable
- Compatible with all fiber types: G.652D and G.657 series
- Fast and simple installation



Drop cabinet for up to 144f customer connections

- 96 up to 144 Point-to-multipoint positions, SC & LC footprint
- 8 branch-off blown fiber Ø5,7& 8mm micro tube positions
- 4 branch-off blown fiber Ø 12mm micro tube positions
- 144 direct drop blown fiber Ø5,7 & 8mm micro tube positions
- 12 OCM1 LGX Style Fiber Optic Splitter Module positions
- Transient-free, modular, flexible fiber management ·
- FIST single-circuit and single-element splice trays
- Up to 768 splices (including SC trays 256 splices)
- Storage area for looped cable
- Compatible with all fiber types: G.652D and G.657 series
- Fast and simple installation



Accessories

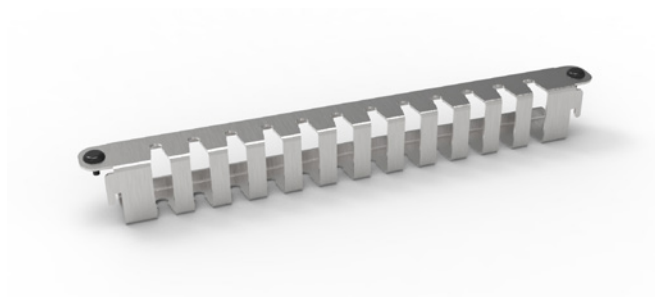
Feeder cable bracket for loop through applications and one extra branch off cable with possibility to terminate cables up to 23mm. a strength member or aramid yarns.



Micro-duct retention plates for feeder tubes for 4 single blown fiber Ø5,7 & 8mm micro-tube positions & 2 single blown fiber Ø12mm micro-tube positions at the bottom of the cabinet provides fast and easy way for termination of blown fiber tubes, snap in feature. The bracket is delivered with CTU for a strength member termination.



Micro-duct retention plates for drop tubes for 12 single blown fiber Ø5, 7&8mm micro-tube positions at the bottom of the cabinet provides fast and easy way for termination of blown fiber tubes.



CABINET ORDERING INFORMATION:

MID	Description	Additional information	MOQ
760246205	OCAB-P-S4-D315-KIT01-72F	Cabinet for up to 72f customer connections, including SC trays for 160 splices, no micro-duct retention plates included, depth 315mm	8 pieces
760250754	OCAB-P-S4-D250- KIT01-72F	Cabinet for up to 72f customer connections, including SC trays for 160 splices, no micro-duct retention plates included, depth 250mm	8 pieces
760250755	OCAB-P-S4-D315- KIT01-144F	Cabinet for up to 144f customer connections, including SC trays for 256 splices, no micro-duct retention plates included, depth 315mm	5 pieces
760250756	OCAB-P-S4-D250- KIT01-144F	Cabinet for up to 144f customer connections, including SC trays for 256 splices, no micro-duct retention plates included, depth 250mm	5 pieces
760246203	OCAB-P-I3-INW-72F	Only inner-work, no micro-duct retention plates included	8 pieces
760246204	OCAB-P-I3-INW-144F	Only inner-work, no micro-duct retention plates included	5 pieces

MICRO-DUCT RETENTION PLATES FOR FEEDER TUBES:

MID	Description	Additional information	MOQ
760250622	OCAB-P-I3-ACC-FRP-5MM	Packaging contains 8 individually packed pieces	8 pieces
760250621	OCAB-P-I3-ACC-FRP-7MM	Packaging contains 8 individually packed pieces	8 pieces
760250620	OCAB-P-I3-ACC-FRP-8MM	Packaging contains 8 individually packed pieces	8 pieces
760250619	OCAB-P-I3-ACC-FRP-12MM	Packaging contains 8 individually packed pieces	8 pieces

MICRO-DUCT RETENTION PLATES FOR DROP TUBES:

MID	Description	Additional information	MOQ
760250625	OCAB-P-I3-ACC-DRP-5MM	Packaging contains 8 individually packed kits;1 kit contains 2 retention plates for 12 tubes each; including hardware	8 kits
760250624	OCAB-P-I3-ACC-DRP-7MM	Packaging contains 8 individually packed kits;1 kit contains 2 retention plates for 12 tubes each; including hardware	8 kits
760250623	OCAB-P-I3-ACC-DRP-8MM	Packaging contains 8 individually packed kits;1 kit contains 2 retention plates for 12 tubes each including hardware	8 kits

IN-GROUND ROOT ORDERING INFORMATION:

MID	Description	Additional information	MOQ
760248043	OCAB-P-S4-01-IGR-D315xW535	Inground-root for the 72f cabinet, depth 315mm, including mounting hardware	8 pieces
760250899	OCAB-P-S4-01-IGR-D250xW535	Inground-root for the 72f cabinet, depth 250mm, including mounting hardware	8 pieces
760250900	OCAB-P-S4-01-IGR-D315xW775	Inground-root for the 144f cabinet, depth 315mm, including mounting hardware	5 pieces
760250901	OCAB-P-S4-01-IGR-D250xW775	Inground-root for the 144f cabinet, depth 250mm, including mounting hardware	5 pieces

OCM1 SPLITTER ORDERING INFORMATION: STANDARD LGX TYPE FOOTPRINT

MID	Description	Additional information	MOQ	QTY Required for 48 drops	QTY required for 96 drops
LX1SSP1104004	LGX SPLTR MOD (4) 1X4 APC/LC	OCM1 LGX Style Fiber Optic Splitter Module, Planar, four 1x4 Splitter, singlemode, LC/APC, symmetrical split ratio		3	6
LX1SSP3108001	LGX SPLTR MOD 1X8 APC/SC	OCM1 LGX Style Fiber Optic Splitter Module, Planar, one 1x8 Splitter, singlemode, LC/APC, symmetrical split ratio		6	12
LX1SSP1108002	LGX SPLTR MOD (2) 1X8 APC/LC	OCM1 LGX Style Fiber Optic Splitter Module, Planar, two 1x8 Splitter, singlemode, LC/APC, symmetrical split ratio		3	6
LX1SSP3104002	LGX SPLTR MOD (2) 1X4 APC/SC	OCM1 LGX Style Fiber Optic Splitter Module, FBT, two 1x4 Splitters, singlemode, SC/APC, symmetrical split ratio		6	12
LX1SSP3108001	LGX SPLTR MOD 1X8 APC/SC	OCM1 LGX Style Fiber Optic Splitter Module, Planar, one 1x8 Splitter, singlemode, SC/APC, symmetrical split ratio		6	12

*Max LGX positions for 48f cabinet is 10. Using SC/APC 1:4 splitters allow for a maximum of 40 drops.

**Max LGX positions for 96f cabinet is 12. Using SC/APC 1:4 splitters allow for a maximum of 48 drops.

CommScope pushes the boundaries of communications technology with game-changing ideas and ground-breaking discoveries that spark profound human achievement.

We collaborate with our customers and partners to design, create and build the world's most advanced networks. It is our passion and commitment to identify the next opportunity and realize a better tomorrow. Discover more at commscope.com

COMMSCOPE®

commscope.com

Visit our website or contact your local CommScope representative for more information.

© 2021 CommScope, Inc. All rights reserved.

Unless otherwise noted, all trademarks identified by ® or ™ are registered trademarks, respectively, of CommScope, Inc. This document is for planning purposes only and is not intended to modify or supplement any specifications or warranties relating to CommScope products or services. CommScope is committed to the highest standards of business integrity and environmental sustainability with a number of CommScope's facilities across the globe certified in accordance with international standards, including ISO 9001, TL 9000, and ISO 14001. Further information regarding CommScope's commitment can be found at www.commscope.com/corporate-responsibility-and-sustainability

CO-1144432-EN (02/21)