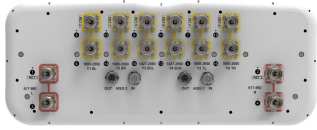


# KKZZV4-65D-R8



16-port sector antenna, 4x 617–960(R1, R2), 4x 1427–2690(Y3, Y4) and 8x 1695–2690(Y1, Y2, Y5, Y6) MHz, 65° HPBW, 8x RET. All Internal RET actuators are connected in “Cascaded SRET” configuration.

- Covers Band 71 with up to 4x MIMO support
- Utilize new aerodynamic endcap for wind load optimization

## General Specifications

<b>Antenna Type</b>	Sector
<b>Band</b>	Multiband
<b>Color</b>	Light Gray (RAL 7035)
<b>Grounding Type</b>	RF connector inner conductor and body grounded to reflector and mounting bracket
<b>Performance Note</b>	Outdoor usage
<b>Radome Material</b>	Fiberglass, UV resistant
<b>Reflector Material</b>	Aluminum
<b>RF Connector Interface</b>	4.3-10 Female
<b>RF Connector Location</b>	Bottom
<b>RF Connector Quantity, high band</b>	12
<b>RF Connector Quantity, low band</b>	4
<b>RF Connector Quantity, total</b>	16

## Remote Electrical Tilt (RET) Information

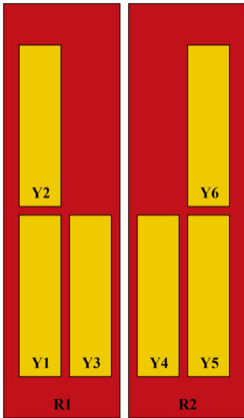
<b>RET Hardware</b>	CommRET v2
<b>RET Interface</b>	8-pin DIN Female   8-pin DIN Male
<b>RET Interface, quantity</b>	2 female   2 male
<b>Input Voltage</b>	10–30 Vdc
<b>Internal RET</b>	High band (6)   Low band (2)
<b>Power Consumption, active state, maximum</b>	8 W
<b>Power Consumption, idle state, maximum</b>	1 W
<b>Protocol</b>	3GPP/AISG 2.0 (Single RET)

## Dimensions

# KKZZV4-65D-R8

<b>Width</b>	498 mm   19.606 in
<b>Depth</b>	197 mm   7.756 in
<b>Length</b>	2688 mm   105.827 in
<b>Net Weight, without mounting kit</b>	55.7 kg   122.797 lb

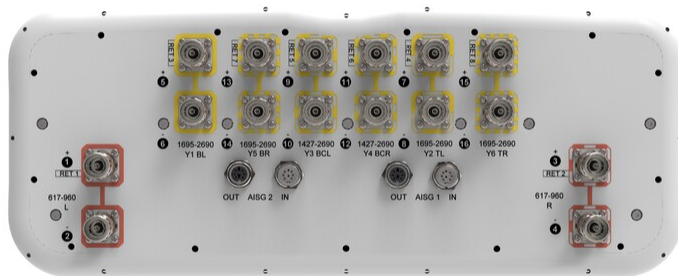
## Array Layout



Array ID	Frequency (MHz)	RF Connector	RET (SRET)	AISG RET UID
R1	617-960	1 - 2	1	CPxxxxxxxxxxxxxxxxR1
R2	617-960	3 - 4	2	CPxxxxxxxxxxxxxxxxR2
Y1	1695-2690	5 - 6	3	CPxxxxxxxxxxxxxxxxY1
Y2	1695-2690	7 - 8	4	CPxxxxxxxxxxxxxxxxY2
Y3	1427-2690	9 - 10	5	CPxxxxxxxxxxxxxxxxY3
Y4	1427-2690	11 - 12	6	CPxxxxxxxxxxxxxxxxY4
Y5	1695-2690	13 - 14	7	CPxxxxxxxxxxxxxxxxY5
Y6	1695-2690	15 - 16	8	CPxxxxxxxxxxxxxxxxY6

(Sizes of colored boxes are not true depictions of array sizes)

## Port Configuration



## Electrical Specifications

<b>Impedance</b>	50 ohm
<b>Operating Frequency Band</b>	1427 – 1518 MHz   1695 – 2690 MHz   617 – 960 MHz
<b>Polarization</b>	±45°

# KKZZV4-65D-R8

Total Input Power, maximum

1,000 W @ 50 °C

## Electrical Specifications

Frequency Band, MHz	617–698	698–890	890–960	1427–1518	1695–1920	1920–2200	2300–2690
Gain, dBi	15.4	16	16.4	15.5	17.3	18.2	18.2
Beamwidth, Horizontal, degrees	70	61	60	69	61	54	58
Beamwidth, Vertical, degrees	9.2	8	7	6.8	6.6	5.8	4.9
Beam Tilt, degrees	2–12	2–12	2–12	2–12	2–12	2–12	2–12
USLS (First Lobe), dB	17	17	16	15	16	17	18
Front-to-Back Ratio at 180°, dB	33	32	28	27	33	31	32
Isolation, Cross Polarization, dB	25	25	25	25	25	25	25
Isolation, Inter-band, dB	25	25	25	25	25	25	25
VSWR   Return loss, dB	1.5 14.0	1.5 14.0	1.5 14.0	1.5 14.0	1.5 14.0	1.5 14.0	1.5 14.0
PIM, 3rd Order, 2 x 20 W, dBc	-150	-150	-150	-150	-150	-150	-150
Input Power per Port at 50°C, maximum, watts	300	300	300	250	250	250	200

## Electrical Specifications, BASTA

Frequency Band, MHz	617–698	698–890	890–960	1427–1518	1695–1920	1920–2200	2300–2690
Gain by all Beam Tilts, average, dBi	15.1	15.6	16	15	16.5	17.4	17.5
Gain by all Beam Tilts Tolerance, dB	±0.5	±0.5	±0.6	±0.7	±1	±1	±0.8
Front-to-Back Total Power at 180° ± 30°, dB	21	22	22	21	26	26	25
CPR at Boresight, dB	20	20	20	16	20	19	19
CPR at Sector, dB	10	11	8	5	5	5	4

## Mechanical Specifications

Wind Loading @ Velocity, frontal

944.0 N @ 150 km/h (212.2 lbf @ 150 km/h)

Wind Loading @ Velocity, lateral

292.0 N @ 150 km/h (65.6 lbf @ 150 km/h)

Wind Loading @ Velocity, maximum

1,130.0 N @ 150 km/h (254.0 lbf @ 150 km/h)

Wind Speed, maximum

241 km/h (150 mph)

# KKZZV4-65D-R8

---

## Packaging and Weights

<b>Width, packed</b>	565 mm   22.244 in
<b>Depth, packed</b>	309 mm   12.165 in
<b>Length, packed</b>	2935 mm   115.551 in
<b>Weight, gross</b>	76.7 kg   169.094 lb

## Regulatory Compliance/Certifications

<b>Agency</b>	<b>Classification</b>
CHINA-ROHS	Above maximum concentration value
ISO 9001:2015	Designed, manufactured and/or distributed under this quality management system
ROHS	Compliant/Exempted
UK-ROHS	Compliant/Exempted



## Included Products

BSAMNT-4	-	Wide Profile Antenna Downtilt Mounting Kit for 2.4 - 4.5 in (60 - 115 mm) OD round members. Kit contains one scissor top bracket set and one bottom bracket set.
BSAMNT-M4	-	Middle Downtilt Mounting Kit for Long Antennas for 2.4 - 4.5 in (60 - 115 mm) OD round members. Kit contains one scissor bracket set.

## \* Footnotes

<b>Performance Note</b>	Severe environmental conditions may degrade optimum performance
-------------------------	---

# BSAMNT-4



Wide Profile Antenna Downtilt Mounting Kit for 2.4 - 4.5 in (60 - 115 mm) OD round members. Kit contains one scissor top bracket set and one bottom bracket set.

## Product Classification

**Product Type** Downtilt mounting kit

## General Specifications

**Application** Outdoor

**Color** Silver

## Dimensions

**Compatible Diameter, maximum** 115 mm | 4.528 in

**Compatible Diameter, minimum** 60 mm | 2.362 in

**Weight, net** 6.5 kg | 14.33 lb

## Material Specifications

**Material Type** Galvanized steel

## Packaging and Weights

**Included** Brackets | Hardware

**Packaging quantity** 1

## Regulatory Compliance/Certifications

Agency	Classification
CHINA-ROHS	Below maximum concentration value
ISO 9001:2015	Designed, manufactured and/or distributed under this quality management system
REACH-SVHC	Compliant as per SVHC revision on <a href="http://www.commscope.com/ProductCompliance">www.commscope.com/ProductCompliance</a>
ROHS	Compliant
UK-ROHS	Compliant



# BSAMNT-M4



Middle Downtilt Mounting Kit for Long Antennas for 2.4 - 4.5 in (60 - 115 mm) OD round members. Kit contains one scissor bracket set.

## Product Classification

**Product Type** Downtilt mounting kit

## General Specifications

**Application** Outdoor

**Color** Silver

## Dimensions

**Compatible Diameter, maximum** 115 mm | 4.528 in

**Compatible Diameter, minimum** 60 mm | 2.362 in

**Weight, net** 4.6 kg | 10.141 lb

## Material Specifications

**Material Type** Galvanized steel

## Packaging and Weights

**Included** Brackets | Hardware

**Packaging quantity** 1

## Regulatory Compliance/Certifications

Agency	Classification
CHINA-ROHS	Below maximum concentration value
ISO 9001:2015	Designed, manufactured and/or distributed under this quality management system
REACH-SVHC	Compliant as per SVHC revision on <a href="http://www.commscope.com/ProductCompliance">www.commscope.com/ProductCompliance</a>
ROHS	Compliant
UK-ROHS	Compliant

