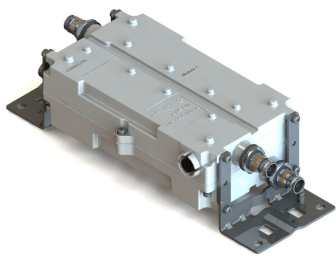


E16V87P63



Interference Mitigation Filter for 2600 MHz B7 band with rejection 46dB in 2575-2615 MHz band

Product Classification

Product Type Interference mitigation filter

General Specifications

Color Gray

Modularity 2-Twin

Mounting Pipe Hardware Band clamps (2)

RF Connector Interface 4.3-10 Female

RF Connector Interface Body Style Long neck

Dimensions

Height 80 mm | 3.15 in

Width 147 mm | 5.787 in

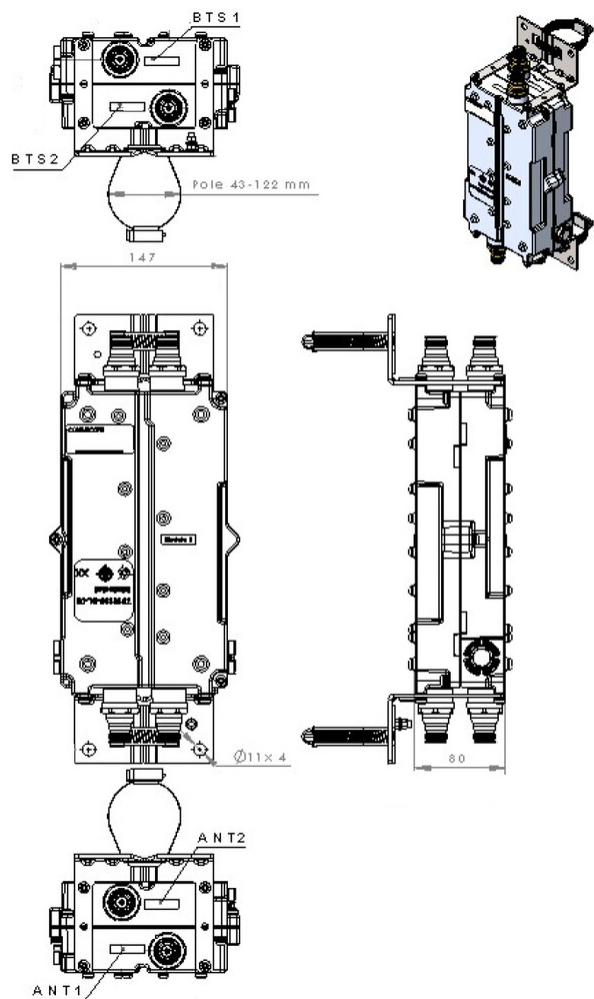
Depth 261 mm | 10.276 in

Ground Screw Diameter 5 mm | 0.197 in

Mounting Pipe Diameter Range 43–122 mm

Outline Drawing

E16V87P63



Electrical Specifications

Impedance 50 ohm

Electrical Specifications, dc Power/Alarm

Lightning Surge Current 10 kA

Lightning Surge Current Waveform 8/20 waveform

Electrical Specifications

Sub-module	1 2	1 2
Branch	1	1
License Band	IMT 2600, Band Pass	IMT 2600, Band Pass

Electrical Specifications, Band Pass

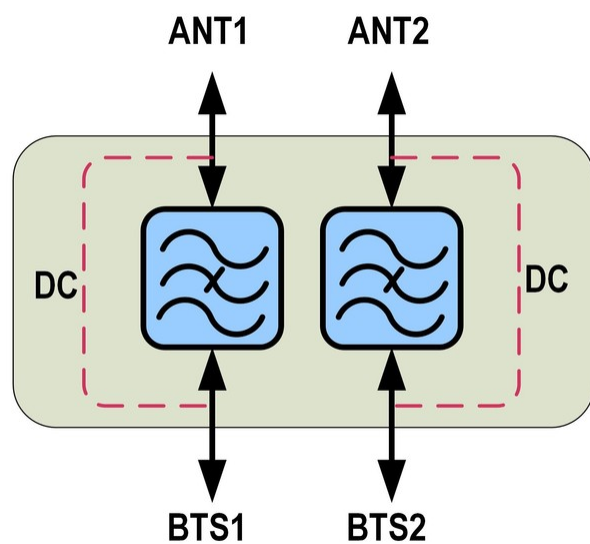
E16V87P63

Frequency Range, MHz	2500–2570	2620–2690
Insertion Loss, maximum, dB	1.75	1.9
Insertion Loss, typical, dB	0.3	0.3
Total Group Delay, maximum, ns	130	130
Return Loss, minimum, dB	18	18
Return Loss, typical, dB	20	20
Input Power, RMS, maximum, W		100
Input Power, PEP, maximum, W		1000
3rd Order PIM, maximum, dBc		-150
3rd Order PIM Test Method		Two +43 dBm carriers

Electrical Specifications, Band Reject

Frequency Range, MHz	2575–2615
Attenuation, minimum, dB	46

Block Diagram



Environmental Specifications

Operating Temperature	-40 °C to +65 °C (-40 °F to +149 °F)
Relative Humidity	Up to 100%
Ingress Protection Test Method	IEC 60529:2001, IP67

E16V87P63

Packaging and Weights

Included	Mounting hardware
Weight, without mounting hardware	5.2 kg 11.464 lb