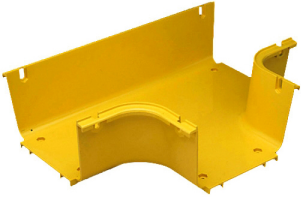


# FGS-MHRT

---

## Base Product



### FiberGuide® Molded Horizontal T

- Engineers and installers can benefit from the large suite of available FiberGuide design tools
- FiberGuide is an optical raceway system for central office, mobile switching center and data center applications
- FiberGuide maintains a minimum bend radius throughout the entire system, regardless the system size
- FiberGuide products are designed and manufactured to ensure total off-frame fiber cable protection

Available in the following system dimensions:

- 51 mm x 51 mm (2 in x 2 in)
- 51 mm x 102 mm (2 in x 4 in)
- 51 mm x 152 mm (2 in x 6 in)
- 102 mm x 102 mm (4 in x 4 in)
- 102 mm x 152 mm (4 in x 6 in)
- 102 mm x 305 mm (4 in x 12 in)
- 102 mm x 610 mm (4 in x 24 in)

## Product Classification

<b>Regional Availability</b>	Asia   Australia/New Zealand   EMEA   Latin America   North America
<b>Portfolio</b>	CommScope®
<b>Product Type</b>	Tee
<b>Product Brand</b>	FiberGuide®
<b>Product Series</b>	FGS

## General Specifications

<b>Color</b>	Yellow
<b>Orientation</b>	Horizontal
<b>Section Type</b>	Tee section

## Ordering Tree

# FGS-MHRT

9 10  
 FGS B - MHRT - H

### Section Color

9	empty	yellow
	B	black

### Section Size

10	A	4 x 4 in
	B	4 x 6 in
	B-VS	4 x 6 in, variable support bracket
	F	4 x 12 in
	F/B	4 x 12 in, 6 in exit
	F/B-S	4 x 12 in, 6 in exit, with variable support bracket
	F/B-VS	4 x 12 in, 6 in exit, variable support bracket
	F-VS	4 x 12 in, variable support bracket
	G	2 x 6 in
	H	4 x 24 in
	H/F	4 x 24 in, 12 in exit
	H/F-VS	4 x 24 in, 12 in exit, variable support bracket
	M	4 x 18 in
	M/F	4 x 18 in, 12 in exit
	M/H	4 x 18 in, 24 in exit
H/M	4 x 18 in	

\* Support brackets only come in black

## Environmental Specifications

<b>Flammability Rating</b>	CSA S143   UL 2024   UL 94 V-0
<b>Halogen Characteristics</b>	Blue Angel   TCO '99   WEEE
<b>Safety Standard</b>	CSA   UL

## Packaging and Weights

<b>Packaging quantity</b>	1
---------------------------	---

## Regulatory Compliance/Certifications

Agency	Classification
CHINA-ROHS	Below maximum concentration value
REACH-SVHC	Compliant as per SVHC revision on <a href="https://www.commscope.com/ProductCompliance">www.commscope.com/ProductCompliance</a>
ROHS	Compliant
UK-ROHS	Compliant

