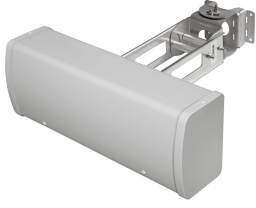


CMAX-HM4-60-153



Cell-Max™ Low PIM Directional High Capacity Venue Over the Head (4x4 MIMO) Antenna, 1695–2700, 3300–4200 MHz

Product Classification

Product Type	Over-the-head stadium antenna
Product Brand	Cell-Max™

General Specifications

Application	Indoor/Outdoor
Antenna Type	Directional
Antenna Array Characteristic	MIMO 4x4
Polarization	±45°
Color	Light Gray (RAL 7035)
Number of Ports	4
Radome Material	PVC
RF Connector Interface	4.3-10 Female

Dimensions

Width	164 mm 6.457 in
Depth	115 mm 4.528 in
Length	426 mm 16.772 in

Electrical Specifications

Impedance	50 ohm
Lightning Protection	dc Ground
Operating Frequency Band	1695 – 2700 MHz 3300 – 4200 MHz
Electrical Note	Values typical, unless otherwise stated

Electrical Specifications

Frequency Band, MHz	1695–2200	2200–2700	3300–4200
Gain, dBi	8.9	8.9	8.7

CMAX-HM4-60-153

Beamwidth, Horizontal, degrees	63	64	60
Beamwidth, Vertical, degrees	64	64	60
Front-to-Back Ratio, Copolarization 180° ± 30°, dB	22	22	20
Isolation, Cross Polarization, dB	22	22	22
VSWR Return loss, dB	1.5 14.0	1.5 14.0	1.5 14.0
PIM, 3rd Order, 2 x 20 W, dBc	-153	-153	-153
Input Power per Port, maximum, watts	100	100	100

Environmental Specifications

Operating Temperature	-40 °C to +60 °C (-40 °F to +140 °F)
Relative Humidity	Up to 100%
Vibration Test Method	ASTM D4169 IEC 60068-2-6

Packaging and Weights

Width, packed	350 mm 13.78 in
Depth, packed	190 mm 7.48 in
Length, packed	470 mm 18.504 in
Included	Mounting bracket
Net Weight, with mounting kit	4.5 kg 9.921 lb
Packaging quantity	1
Weight, gross	5.5 kg 12.125 lb
Weight, net	2.6 kg 5.732 lb

Regulatory Compliance/Certifications

Agency	Classification
CHINA-ROHS	Below maximum concentration value
REACH-SVHC	Compliant as per SVHC revision on www.commscope.com/ProductCompliance
ROHS	Compliant
UK-ROHS	Compliant

