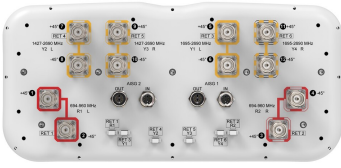


RRZZVV-65D-R6N43V2



12-port sector antenna, 4x 694–960, 4x 1427–2690 and 4x 1695–2690 MHz, 65° HPBW, 6x RET

- All Internal RET actuators are connected in “Cascaded SRET” configuration
- Supports re-configurable antenna sharing capability enabling control of the internal RET system using up to two separate RET compatible OEM radios
- Array configuration provides capability for 4T4R (4x MIMO) on Low band and High band
- Retractable tilt indicator rods
- Antenna shape optimized for wind load reduction

General Specifications

Antenna Type	Sector
Band	Multiband
Color	Light Gray (RAL 7035)
Grounding Type	RF connector inner conductor and body grounded to reflector and mounting bracket
Performance Note	Outdoor usage
Radome Material	Fiberglass, UV resistant
Reflector Material	Aluminum
RF Connector Interface	4.3-10 Female
RF Connector Location	Bottom
RF Connector Quantity, mid band	8
RF Connector Quantity, low band	4
RF Connector Quantity, total	12

Remote Electrical Tilt (RET) Information

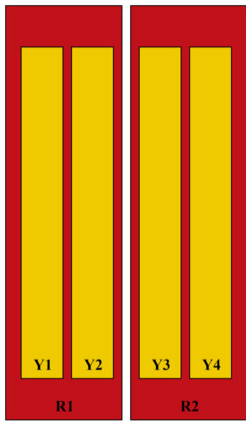
RET Hardware	CommRET v2
RET Interface	8-pin DIN Female 8-pin DIN Male
RET Interface, quantity	2 female 2 male
Input Voltage	10–30 Vdc
Internal RET	Low band (2) Mid band (4)
Power Consumption, active state, maximum	8 W
Power Consumption, idle state, maximum	1 W
Protocol	3GPP/AISG 2.0 (Single RET)

RRZZVV-65D-R6N43V2

Dimensions

Width	430 mm 16.929 in
Depth	197 mm 7.756 in
Length	2769 mm 109.016 in
Net Weight, antenna only	40.9 kg 90.169 lb

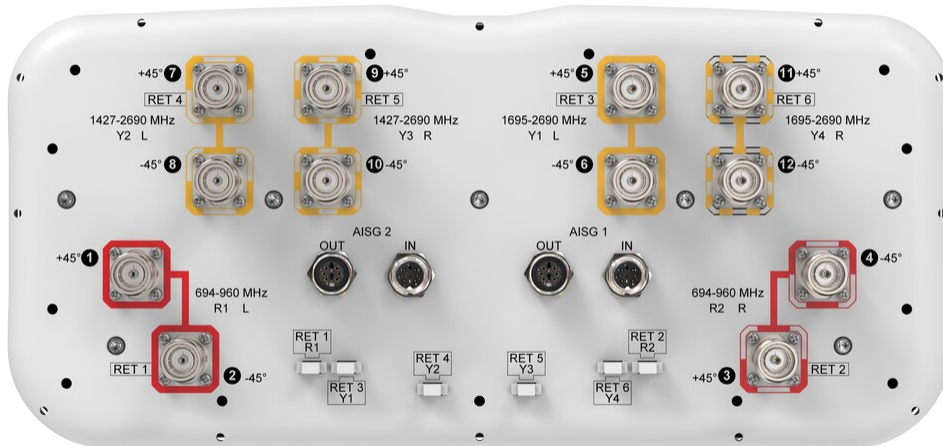
Array Layout



Array ID	Frequency (MHz)	RF Connector	RET (SRET)	AISG No.	AISG RET UID
R1	694-960	1 - 2	1	AISG1	CPxxxxxxxxxxxxxxxxR1
R2	694-960	3 - 4	2	AISG1	CPxxxxxxxxxxxxxxxxR2
Y1	1695-2690	5 - 6	3	AISG1	CPxxxxxxxxxxxxxxxxY1
Y2	1427-2690	7 - 8	4	AISG1	CPxxxxxxxxxxxxxxxxY2
Y3	1427-2690	9 - 10	5	AISG1	CPxxxxxxxxxxxxxxxxY3
Y4	1695-2690	11 - 12	6	AISG1	CPxxxxxxxxxxxxxxxxY4

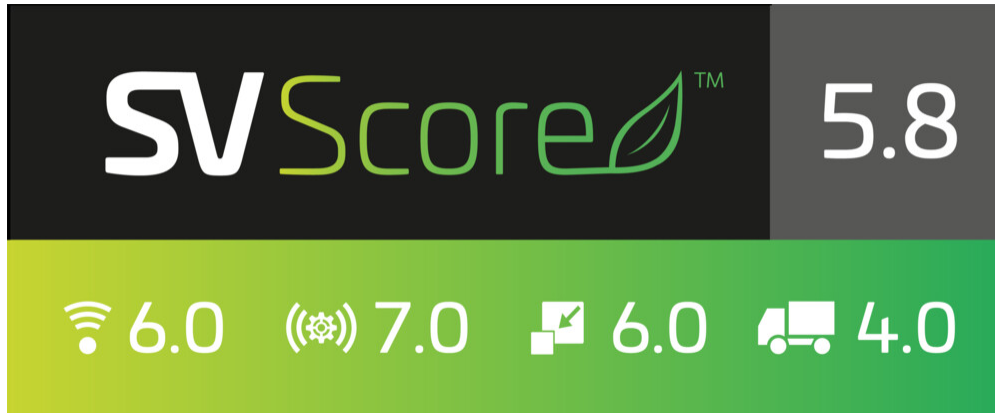
(Sizes of colored boxes are not true depictions of array sizes)

Port Configuration



RRZZVV-65D-R6N43V2

Logo Image



Electrical Specifications

Impedance	50 ohm
Operating Frequency Band	1427 – 2690 MHz 1695 – 2690 MHz 694 – 960 MHz
Polarization	±45°
Total Input Power, maximum	1,200 W @ 50 °C

Electrical Specifications

	R1,R2	R1,R2	R1,R2	Y2,Y3	Y2,Y3	Y2,Y3	Y2,Y3	Y2,Y3
Frequency Band, MHz	698–806	790–894	890–960	1427–1518	1695–1995	1920–2300	2300–2500	2490–2690
RF Port	1-4	1-4	1-4	7-10	7-10	7-10	7-10	7-10
Gain at Mid Tilt, dBi	15.6	16.2	16.5	15.1	16.6	17.6	18.5	18.5
Beamwidth, Horizontal, degrees	70	60	59	77	64	61	53	53
Beamwidth, Vertical, degrees	7.6	6.9	6.4	7.9	6.3	5.6	4.9	4.6
Beam Tilt, degrees	2–12	2–12	2–12	2–12	2–12	2–12	2–12	2–12
USLS (First Lobe), dB	17	17	20	20	15	15	18	20
Front-to-Back Ratio at 180°, dB	31	32	34	34	35	31	32	31
Isolation, Cross Polarization, dB	27	27	27	25	25	25	25	25
Isolation, Inter-band, dB	27	27	27	27	27	27	27	27
VSWR Return loss, dB	1.5 14.0	1.5 14.0	1.5 14.0	1.5 14.0	1.5 14.0	1.5 14.0	1.5 14.0	1.5 14.0
PIM, 3rd Order, 2 x 20 W, dBc	-153	-153	-153	-153	-153	-153	-153	-153
Input Power per Port at 50°C,	300	300	300	250	250	250	200	200

RRZZVV-65D-R6N43V2

maximum, watts

Electrical Specifications, BASTA

Frequency Band, MHz	698–806	790–894	890–960	1427–1518	1695–1995	1920–2300	2300–2500	2490–2690
Gain by all Beam Tilts, average, dBi	15.5	16.1	16.4	15.1	16.5	17.4	18.3	18.3
Gain by all Beam Tilts Tolerance, dB	±0.5	±0.6	±0.5	±0.6	±0.9	±0.7	±0.6	±0.5
Beamwidth, Horizontal Tolerance, degrees	±10	±6	±6	±7	±6	±7	±6	±3
Beamwidth, Vertical Tolerance, degrees	±0.5	±0.4	±0.4	±0.3	±0.5	±0.5	±0.2	±0.2
USLS, beampeak to 20° above beampeak, dB	14	14	15	14	15	15	16	17
Front-to-Back Total Power at 180° ± 30°, dB	22	22	22	26	29	26	27	26
CPR at Boresight, dB	21	20	16	17	20	16	19	16

Electrical Specifications

	Y1,Y4	Y1,Y4	Y1,Y4	Y1,Y4
Frequency Band, MHz	1695–1995	1920–2300	2300–2500	2490–2690
RF Port	5,6,11,12	5,6,11,12	5,6,11,12	5,6,11,12
Gain at Mid Tilt, dBi	16.8	17.7	18.3	18.2
Beamwidth, Horizontal, degrees	66	62	56	59
Beamwidth, Vertical, degrees	6.2	5.5	4.9	4.7
Beam Tilt, degrees	2–12	2–12	2–12	2–12
USLS (First Lobe), dB	17	18	20	19
Front-to-Back Ratio at 180°, dB	33	29	34	36
Isolation, Cross Polarization, dB	25	25	25	25
Isolation, Inter-band, dB	27	27	27	27
VSWR Return loss, dB	1.5 14.0	1.5 14.0	1.5 14.0	1.5 14.0
PIM, 3rd Order, 2 x 20 W, dBc	-153	-153	-153	-153
Input Power per Port at 50°C, maximum, watts	250	250	200	200

Electrical Specifications, BASTA

RRZZVV-65D-R6N43V2

Frequency Band, MHz	1695–1995	1920–2300	2300–2500	2490–2690
Gain by all Beam Tilts, average, dBi	16.7	17.5	18.1	18
Gain by all Beam Tilts Tolerance, dB	±0.8	±0.7	±0.6	±0.5
Beamwidth, Horizontal Tolerance, degrees	±6	±10	±6	±4
Beamwidth, Vertical Tolerance, degrees	±0.4	±0.5	±0.3	±0.2
USLS, beampeak to 20° above beampeak, dB	14	14	14	16
Front-to-Back Total Power at 180° ± 30°, dB	27	25	25	26
CPR at Boresight, dB	20	18	20	19

Mechanical Specifications

Wind Loading @ Velocity, frontal	651.0 N @ 150 km/h (146.4 lbf @ 150 km/h)
Wind Loading @ Velocity, lateral	351.0 N @ 150 km/h (78.9 lbf @ 150 km/h)
Wind Loading @ Velocity, maximum	1,028.0 N @ 150 km/h (231.1 lbf @ 150 km/h)
Wind Loading @ Velocity, rear	421.0 N @ 150 km/h (94.6 lbf @ 150 km/h)
Wind Speed, maximum	241 km/h (150 mph)

Packaging and Weights

Width, packed	530 mm 20.866 in
Depth, packed	356 mm 14.016 in
Length, packed	2897 mm 114.055 in
Weight, gross	60.6 kg 133.6 lb

Regulatory Compliance/Certifications

Agency	Classification
CHINA-ROHS	Below maximum concentration value
ISO 9001:2015	Designed, manufactured and/or distributed under this quality management system
REACH-SVHC	Compliant as per SVHC revision on www.commscope.com/ProductCompliance
ROHS	Compliant
UK-ROHS	Compliant



RRZZVV-65D-R6N43V2

Included Products

- BSAMNT-4 – Wide Profile Antenna Downtilt Mounting Kit for 2.4 - 4.5 in (60 - 115 mm) OD round members. Kit contains one scissor top bracket set and one bottom bracket set.
- BSAMNT-M4 – Middle Downtilt Mounting Kit for Long Antennas for 2.4 - 4.5 in (60 - 115 mm) OD round members. Kit contains one scissor bracket set.

* Footnotes

Performance Note Severe environmental conditions may degrade optimum performance