

# RR-65A-R2VB



4-port sector antenna, 4x 694–960 MHz, 65° HPBW, 2x RET

- All Internal RET actuators are connected in “Cascaded SRET” configuration
- Uses the 4.3-10 connector which is 40 percent smaller than the 7-16 DIN connector
- Tilt indicator is available

## General Specifications

<b>Antenna Type</b>	Sector
<b>Band</b>	Single band
<b>Color</b>	Light Gray (RAL 7035)
<b>Grounding Type</b>	RF connector inner conductor and body grounded to reflector and mounting bracket
<b>Performance Note</b>	Outdoor usage
<b>Radome Material</b>	Fiberglass, UV resistant
<b>Reflector Material</b>	Aluminum
<b>RF Connector Interface</b>	4.3-10 Female
<b>RF Connector Location</b>	Bottom
<b>RF Connector Quantity, low band</b>	4
<b>RF Connector Quantity, total</b>	4

## Remote Electrical Tilt (RET) Information

<b>RET Hardware</b>	CommRET v2
<b>RET Interface</b>	8-pin DIN Female   8-pin DIN Male
<b>RET Interface, quantity</b>	1 female   1 male
<b>Input Voltage</b>	10–30 Vdc
<b>Internal RET</b>	Low band (2)
<b>Power Consumption, active state, maximum</b>	10 W
<b>Power Consumption, idle state, maximum</b>	2 W
<b>Protocol</b>	3GPP/AISG 2.0 (Single RET)

## Dimensions

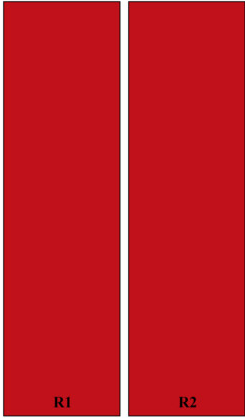
<b>Width</b>	467 mm   18.386 in
<b>Depth</b>	167 mm   6.575 in

# RR-65A-R2VB

**Length** 1497 mm | 58.937 in

**Net Weight, antenna only** 19 kg | 41.888 lb

## Array Layout



Array ID	Frequency (MHz)	RF Connector	HPBW	RET (SRET)	AISG No.	AISG RET UID
R1	694-960	1 - 2	65°	1	AISG1	CPxxxxxxxxxxxxR1
R2	694-960	3 - 4	65°	2	AISG1	CPxxxxxxxxxxxxR2

(Sizes of colored boxes are not true depictions of array sizes)

## Port Configuration



## Electrical Specifications

**Impedance** 50 ohm

**Operating Frequency Band** 694 – 960 MHz

# RR-65A-R2VB

<b>Polarization</b>	±45°
<b>Total Input Power, maximum</b>	800 W

## Electrical Specifications

<b>Frequency Band, MHz</b>	<b>698–806</b>	<b>790–896</b>	<b>890–960</b>
<b>Beamwidth, Horizontal, degrees</b>	65	66	67
<b>Beamwidth, Vertical, degrees</b>	15	13.5	12.4
<b>Beam Tilt, degrees</b>	2–16	2–16	2–16
<b>USLS (First Lobe), dB</b>	15	17	18
<b>Front-to-Back Ratio at 180°, dB</b>	32	32	32
<b>Front-to-Back Total Power at 180° ± 30°, dB</b>	22	23	22
<b>Isolation, Cross Polarization, dB</b>	25	25	25
<b>Isolation, Inter-band, dB</b>	28	28	28
<b>VSWR   Return loss, dB</b>	1.5   14.0	1.5   14.0	1.5   14.0
<b>PIM, 3rd Order, 2 x 20 W, dBc</b>	-153	-153	-153
<b>Input Power per Port, maximum, watts</b>	300	300	300

## Mechanical Specifications

<b>Wind Loading @ Velocity, frontal</b>	595.0 N @ 150 km/h (133.8 lbf @ 150 km/h)
<b>Wind Loading @ Velocity, lateral</b>	222.0 N @ 150 km/h (49.9 lbf @ 150 km/h)
<b>Wind Loading @ Velocity, rear</b>	735.0 N @ 150 km/h (165.2 lbf @ 150 km/h)
<b>Wind Speed, maximum</b>	241 km/h (150 mph)

## Packaging and Weights

<b>Width, packed</b>	562 mm   22.126 in
<b>Depth, packed</b>	287 mm   11.299 in
<b>Length, packed</b>	1697 mm   66.811 in
<b>Weight, gross</b>	28.7 kg   63.273 lb

## Regulatory Compliance/Certifications

<b>Agency</b>	<b>Classification</b>
CHINA-ROHS	Below maximum concentration value
ISO 9001:2015	Designed, manufactured and/or distributed under this quality management system
REACH-SVHC	Compliant as per SVHC revision on <a href="http://www.commscope.com/ProductCompliance">www.commscope.com/ProductCompliance</a>
ROHS	Compliant

# RR-65A-R2VB

---

UK-ROHS

Compliant



## Included Products

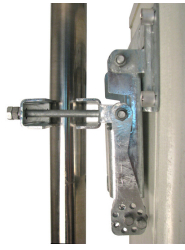
- BSAMNT-B95-03 – Wide Profile Antenna Downtilt Mounting Kit for 2.4 - 4.5 in (60 - 115 mm) OD round members. Kit contains one scissor top bracket set and one bottom bracket set.

## \* Footnotes

**Performance Note** Severe environmental conditions may degrade optimum performance

# BSAMNT-B95-03

---



Wide Profile Antenna Downtilt Mounting Kit for 2.4 - 4.5 in (60 - 115 mm) OD round members. Kit contains one scissor top bracket set and one bottom bracket set.

## Product Classification

**Product Type** Downtilt mounting kit

## General Specifications

**Application** Outdoor

**Color** Silver

## Dimensions

**Compatible Diameter, maximum** 114.3 mm | 4.5 in

**Compatible Diameter, minimum** 61 mm | 2.402 in

**Weight, net** 4.5 kg | 9.921 lb

## Material Specifications

**Material Type** Galvanized steel

## Packaging and Weights

**Included** Brackets | Hardware

**Packaging quantity** 2

## Regulatory Compliance/Certifications

### Agency

CE  
ISO 9001:2015

### Classification

Compliant with the relevant CE product directives  
Designed, manufactured and/or distributed under this quality management system

