

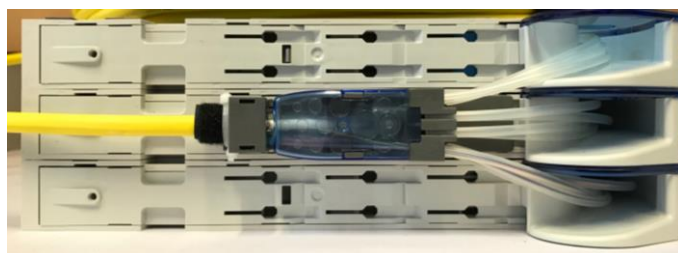
## Contents:

## ODF-SHELF-144F-preterm Shelf

- 1 General Product Information
- 2 Tools
- 3 Overview Rack Layout / Shelf Positioning
- 4 Assembly
  - 4.1 Shelf Installation
  - 4.2 Cable and Fibre Counting
    - 4.2.1 48F cable
    - 4.2.2 144F cable
- 5 Trade-mark
- 6 Contact Information

## 1. General Product Information

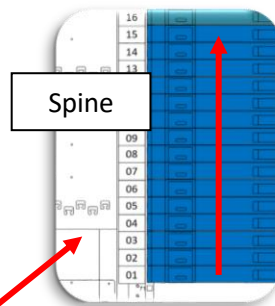
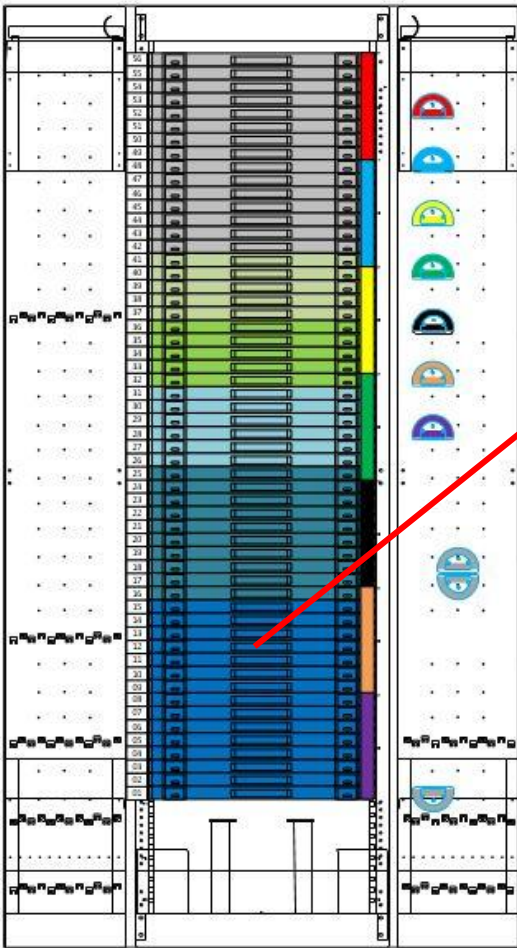
ODF Shelf - 3 Shelf Module for use with COF 950 Cable. Supplied with Cable attached and spliced into the tray



## 2. Tools

No special tools are needed to install the shelf.

## 3. Overview rack layout



Pay attention to the mounting position of the shelf!

Spine shelves for type 1 ODF's always starting on position 01, ending at position 15

All other mounting position are reserved for other applications.

## 4. Assembly

### 4.1. Shelf Installation



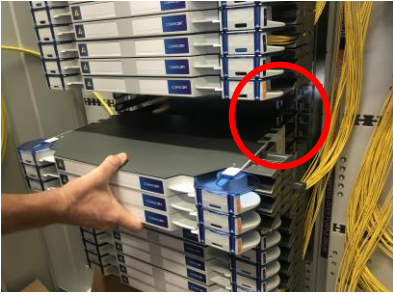
4.1.1 Open the shelf and turn the package so that the cable exit is on the top left.



4.1.2 Prepare the rack with the brackets on the position where you want to install the FACT Module by sliding them in.



4.1.3 Take the cable and shelf out at the same time, handle with care to avoid cable kinking



4.1.4 Slide the FACT module on to the fingers until you hear a "clicking noise".



4.1.5 Unspool the cable, handle with care to avoid cable kinking



4.1.6 Fix the cable on the side duct Using a cable tie



4.1.7 If the cable is not initially threaded through the top of the rack, a removable panel allows cable routing after the shelf is installed.



4.1.8 Unscrew the panel bolts as shown, and pass the cable through.

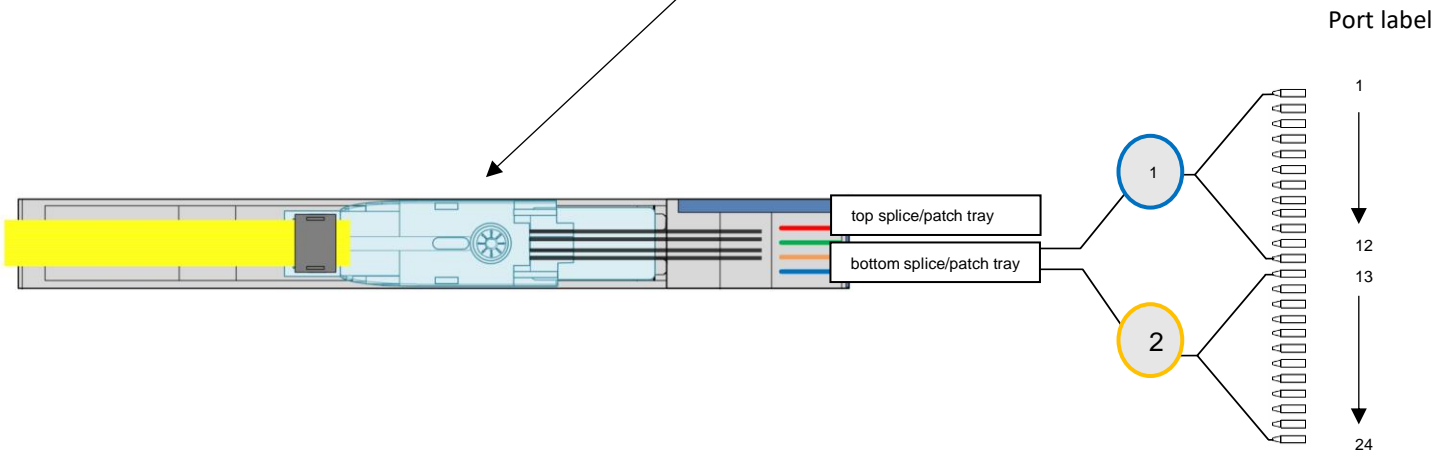
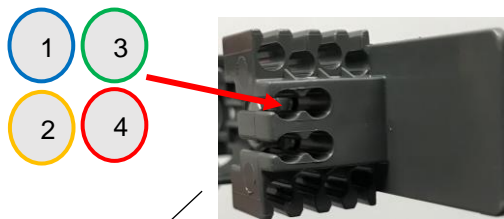


4.1.9 Fix the panel back in place and route the cable into the overhead strut

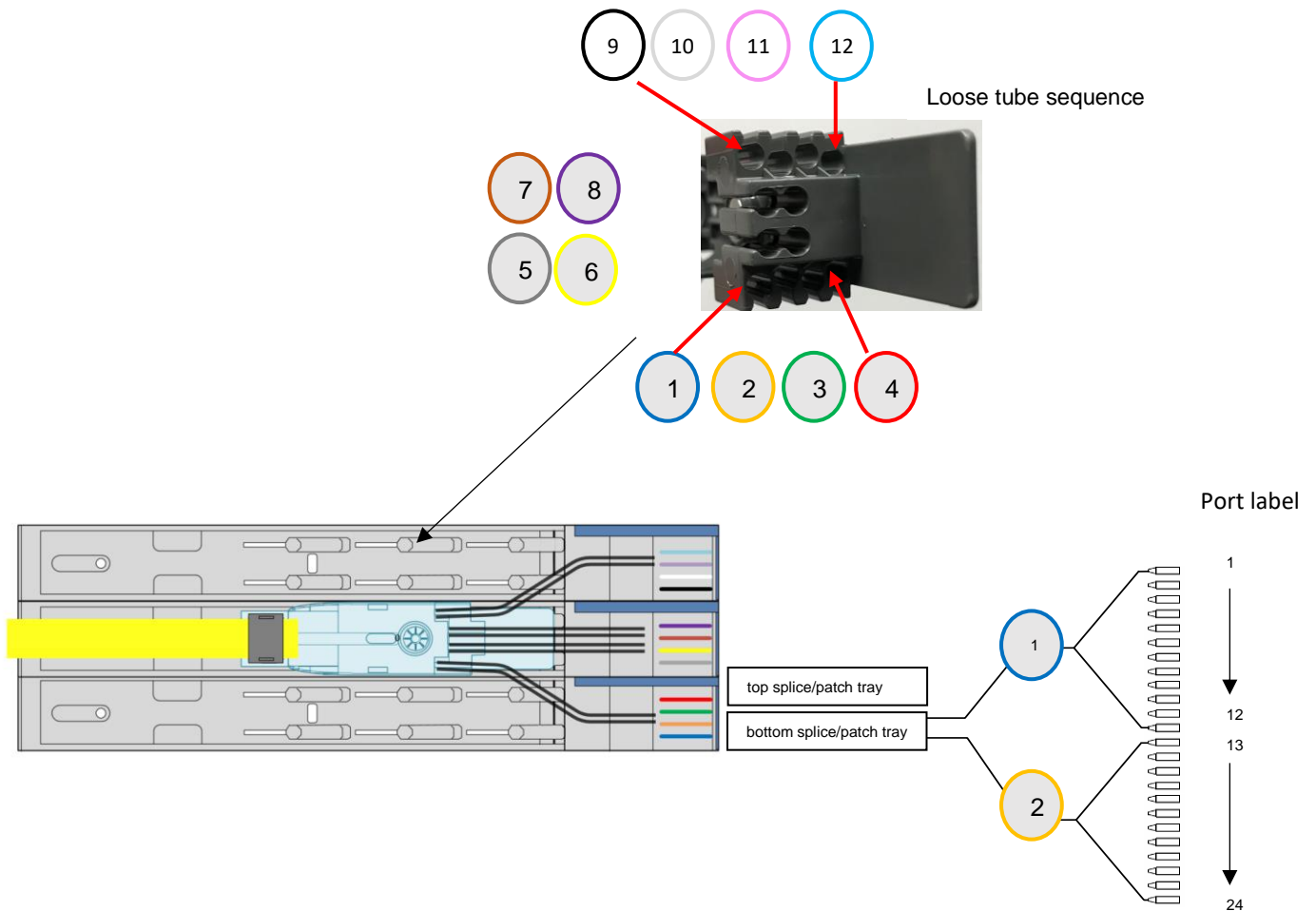
## 4.2. Cable and Fibre Counting

### 4.2.1 COF 950 cable with 48 fibres

Loose tube sequence



#### 4.2.2 COF 950 cable with 144 fibres



#### 5. Trade-marks

All trademarks identified by ® or ™ are registered trademarks or trademarks, respectively, of CommScope, Inc. This document is for planning purposes only and is not intended to modify or supplement any specifications or warranties relating to CommScope products or services. CommScope is committed to the highest standards of business integrity and environmental sustainability, with a number of CommScope's facilities across the globe certified in accordance with international standards, including ISO9001, TL 9000, and ISO 14001. Further information regarding CommScope's commitment can be found at: [www.commscope.com/About-Us/Corporate-Responsibilityand-Sustainability](http://www.commscope.com/About-Us/Corporate-Responsibilityand-Sustainability).

#### 6. Contact information

Visit our website or contact your local CommScope representative for more information. For technical assistance, customer service, or to report any missing/damaged parts, visit us at: <http://www.commscope.com/SupportCenter> This product is covered by one or more U.S. patents or their foreign equivalents. For patents, see [www.commscope.com/ProductPatent/ProductPatent.aspx](http://www.commscope.com/ProductPatent/ProductPatent.aspx)