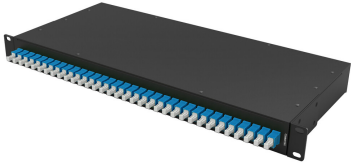


# 1RU-SP4232001 | 1RU SPLTR PNL 2X32 UPC/SC



1RU panel, 2X32 split ratio, 1 splitter, SC/UPC connectors

- \*Product complies with the Build America, Buy America Act (BABAA) requirements of the Infrastructure Investment and Jobs Act of 2021 (Pub. L. 117- 58, §§ 70901-70953), or is the subject of a waiver approved by the Secretary of Commerce or designee. Compliance requirements and waiver applicability vary based on government funding program. Check the laws and regulations for your specific program.

## Product Classification

<b>Regional Availability</b>	Asia   Australia/New Zealand   China   EMEA   India   Latin America   North America
<b>Product Type</b>	Splitter patch panel
<b>Product Series</b>	1RU
<b>Government Funding</b>	Build America Buy America (BABA) compliant*

## General Specifications

<b>Functionality</b>	Splitting
<b>Technology Type</b>	Planar lightwave circuit (PLC)
<b>Distribution Type</b>	2 x 32 splitter
<b>Interface, Input</b>	SC/UPC
<b>Interface, Output</b>	SC/UPC
<b>Splitter, quantity</b>	1

## Dimensions

<b>Height</b>	43.69 mm   1.72 in
<b>Width</b>	482.6 mm   19 in
<b>Length</b>	199.89 mm   7.87 in

## Optical Specifications

<b>Directivity, minimum</b>	55 dB
<b>Polarization Dependent Loss, maximum</b>	0.4 dB
<b>Uniformity, maximum</b>	2.65 dB
<b>Wavelength Range</b>	1260–1650 nm
<b>Insertion Loss, Splitter, maximum</b>	18.2 dB

# 1RU-SP4232001 | 1RU SPLTR PNL 2X32 UPC/SC

---

**Return Loss, Splitter, minimum** 50 dB

## Environmental Specifications

**Operating Temperature** -40 °C to +70 °C (-40 °F to +158 °F)

**Relative Humidity** 5%–95%, non-condensing

## Packaging and Weights

**Packaging quantity** 1

## Regulatory Compliance/Certifications

<b>Agency</b>	<b>Classification</b>
CHINA-ROHS	Below maximum concentration value
REACH-SVHC	Compliant as per SVHC revision on <a href="http://www.commscope.com/ProductCompliance">www.commscope.com/ProductCompliance</a>
ROHS	Compliant
UK-ROHS	Compliant

