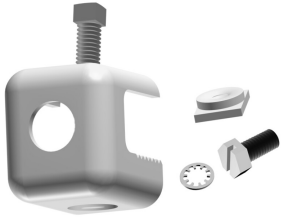


252130



Angle Adapter, universal, 3/8 in tapped hole (insert included)

Product Classification

Product Type	Adapter
Product Brand	I-Line
Ordering Note	CommScope® non-standard product

General Specifications

Adapter Type	Angle adapter
Mounting	3/8 in tapped hole

Dimensions

Inside Width	16.002 mm 0.63 in
Outside Width	38.1 mm 1.5 in
Inside Length	16.002 mm 0.63 in
Outside Length	46.99 mm 1.85 in
Material Thickness	2.972 mm 0.117 in

Material Specifications

Material Type	Stainless steel
----------------------	-----------------

Mechanical Specifications

Installation Torque, maximum	13 ft lb 17.626 N-m
Installation Torque, minimum	11 ft lb 14.914 N-m
Maximum Loading	Double stack, 1-5/8 in cable

Packaging and Weights

Height, packed	23.2 cm 9.134 in
Width, packed	13.3 cm 5.236 in
Length, packed	10.5 cm 4.134 in

252130

Packaging quantity 10
Weight, gross 0.11 kg | 0.243 lb

Regulatory Compliance/Certifications

Agency	Classification
REACH-SVHC	Compliant as per SVHC revision on www.commscope.com/ProductCompliance
ROHS	Compliant
UK-ROHS	Compliant

Included Products

UAAI – Universal Angle Adapter Insert