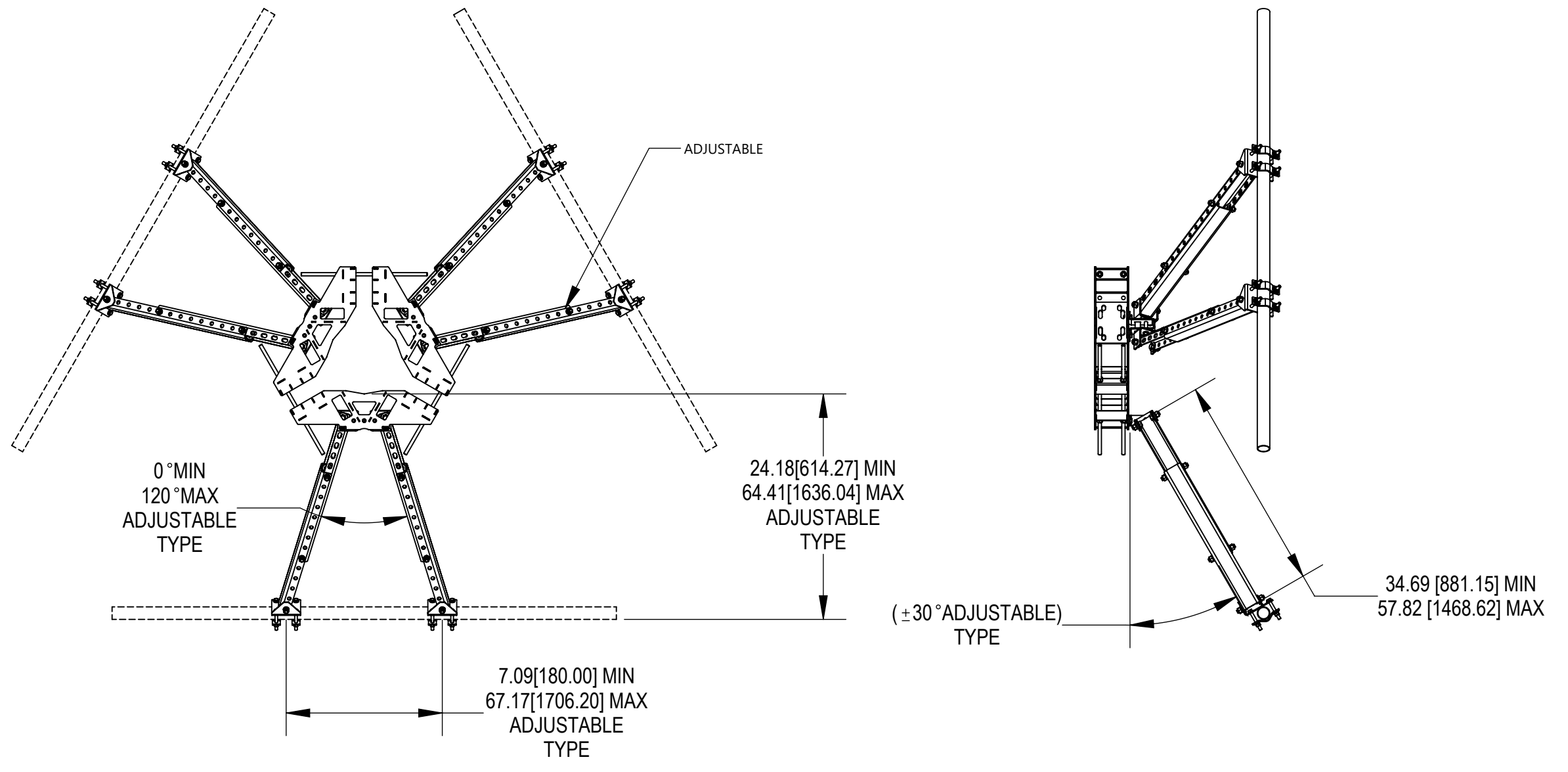
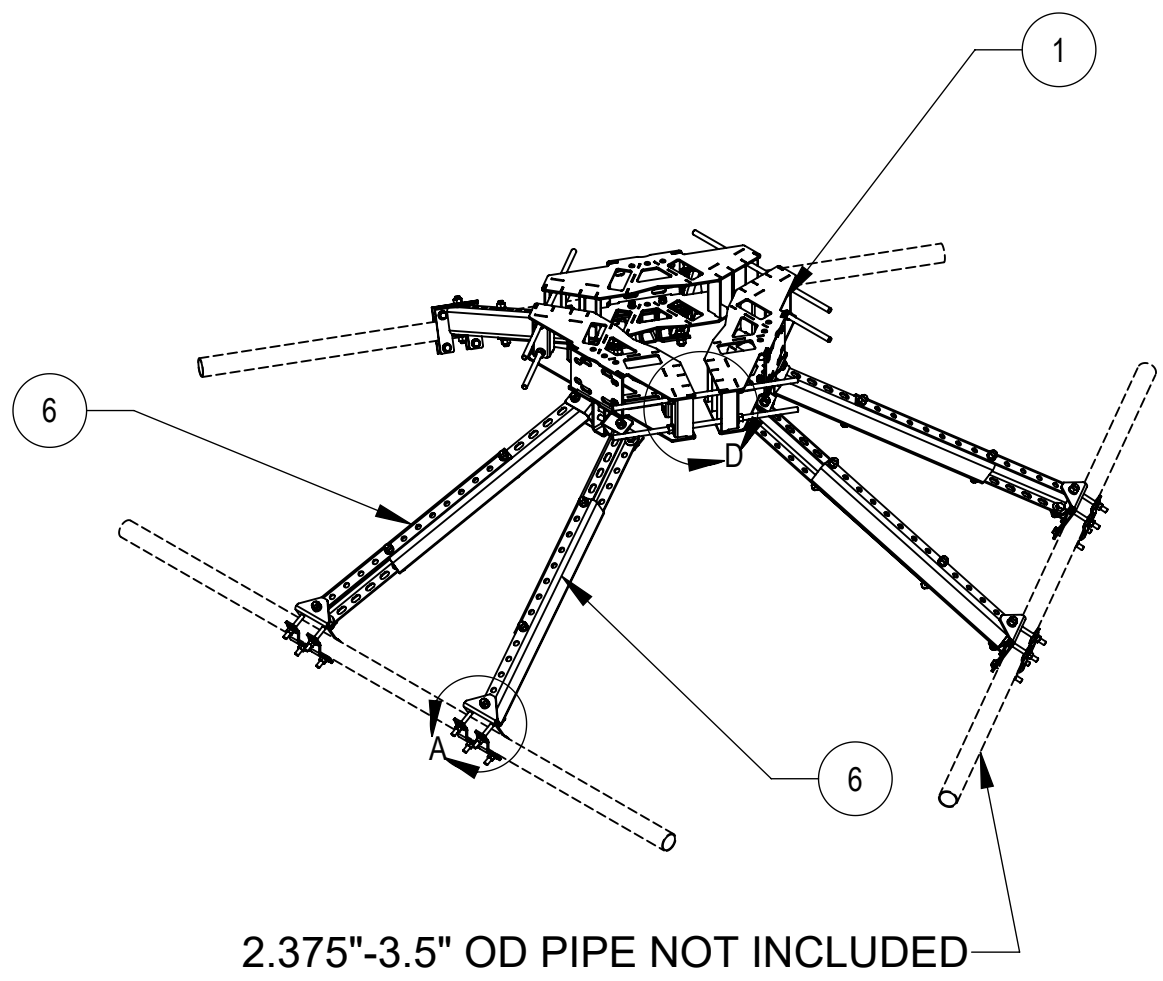


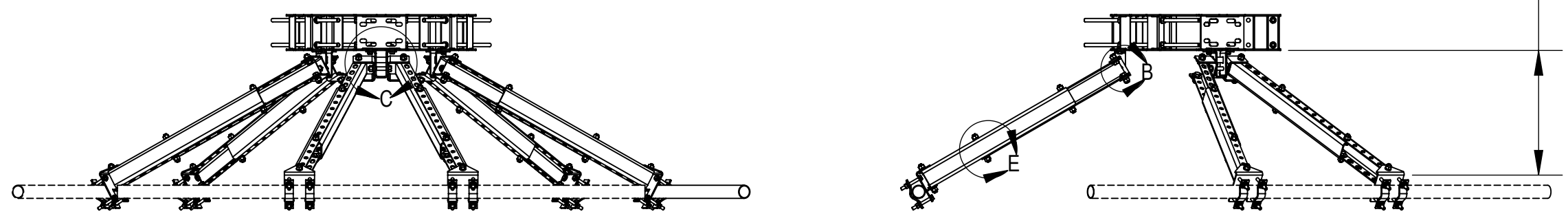
NOTES:

- 1. GENERAL
 - 1.1 ALL METRIC DIMENSIONS ARE IN BRACKETS
 - 1.2 MARK PART WITH IDENTIFICATION NUMBER
- 2. DESIGN NOTES
 - 2.1 FITMENT RANGE FOR RING MOUNT 15" TO 50"
 - 2.2 ALL DIMENSIONS SHOWN ARE FOR REFERENCE ONLY
ALL CONNECTIONS ARE ADJUSTABLE. FINAL INSTALLED APPLICATION DICTATES FINISHED DIMENSIONS.
- 3. MANUFACTURING/SPECIAL REQUIREMENTS
 - 3.1 TIGHTEN ALL BOLTS SECURING FLAT PLATES BY THE TURN-OF-NUT OF THE U-BOLT METHOD. TIGHTEN ALL U-BOLTS USING TURN-OF-NUT METHOD WITH ATTENTION TO LEAVE EQUAL DISTANCE AND EQUAL FORCE ON EACH LEG.
 - 3.2 FINISH: GALVANIZE ASTM A123
- 4. TEST
- 5. PACKAGING
 - 5.1 PACKAGING SHALL MEET COMMSCOPE REQUIREMENTS PER DOCUMENT IS-PL-3005

REVISIONS				
REV.	ECN	DESCRIPTION	BY	DATE
A	15185PC	NEW RELEASED.	XZ1054	10/18/2021



UP TO ±30° AZIMUTH ADJUSTMENT OFF APEX

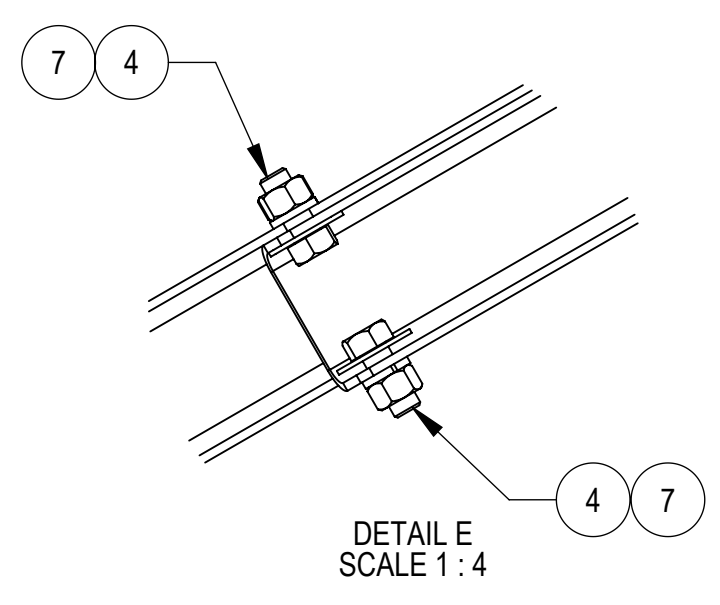
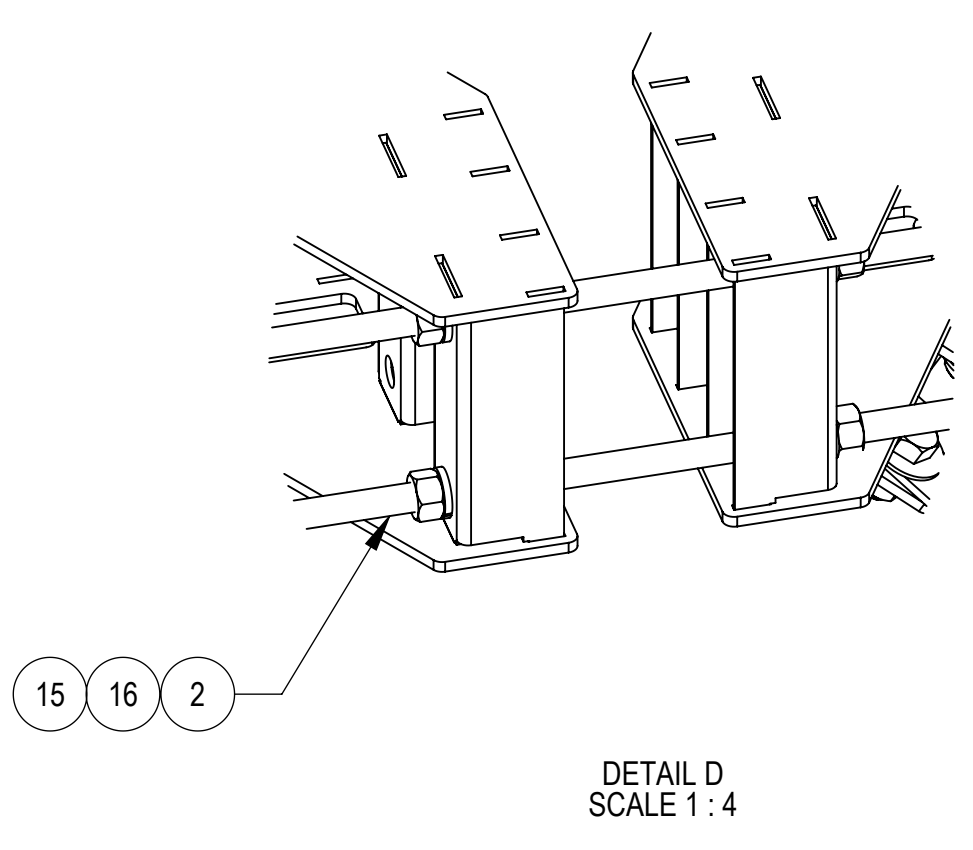
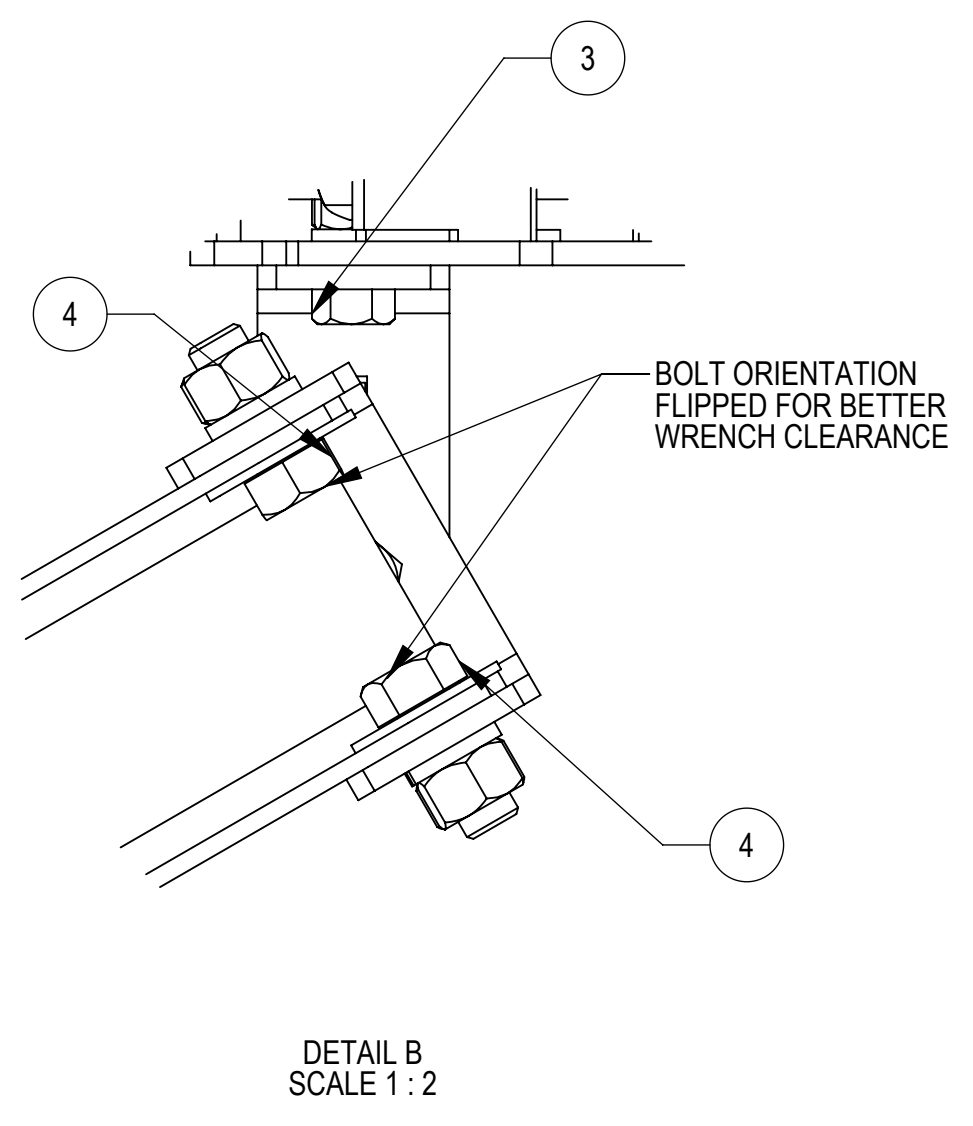
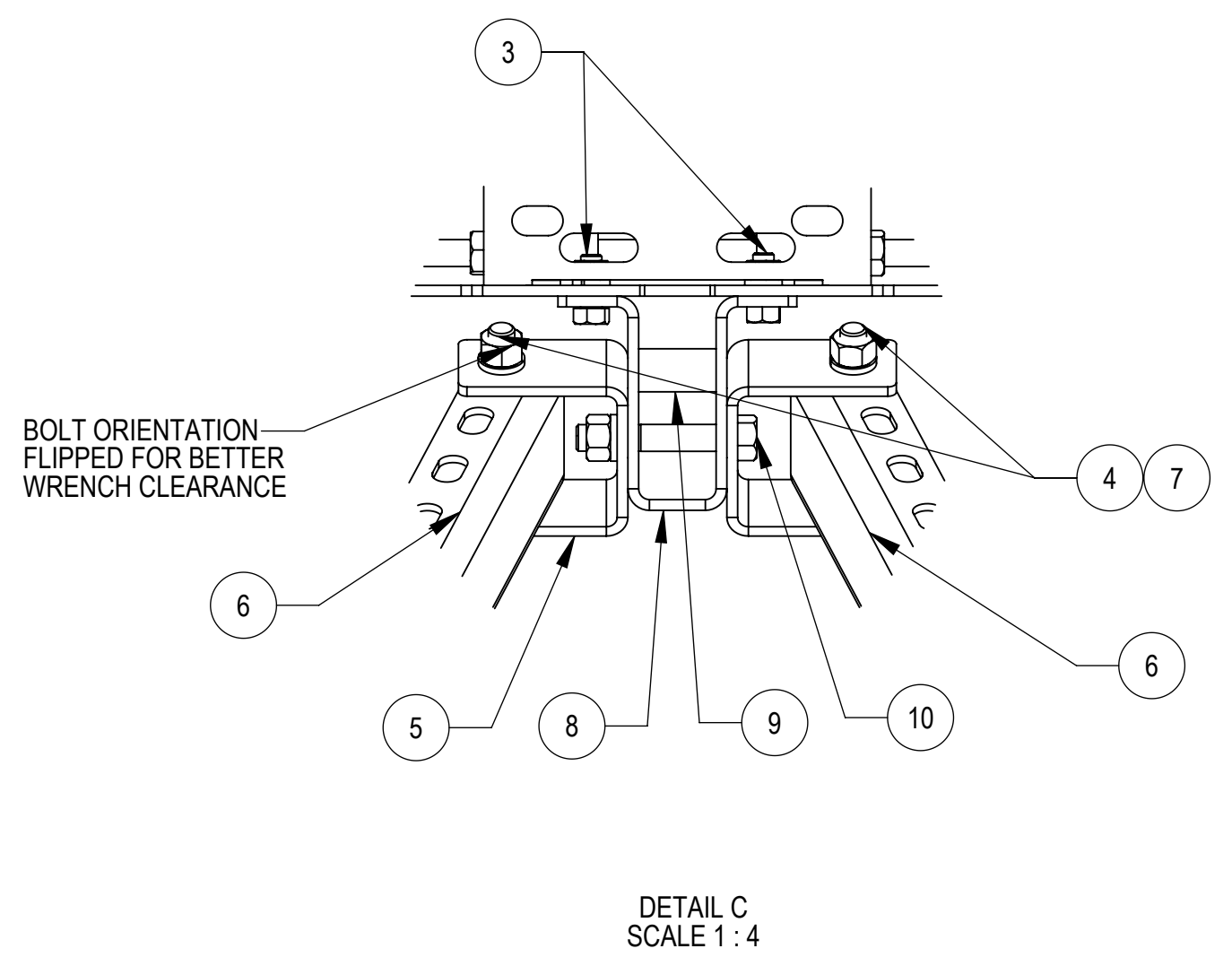
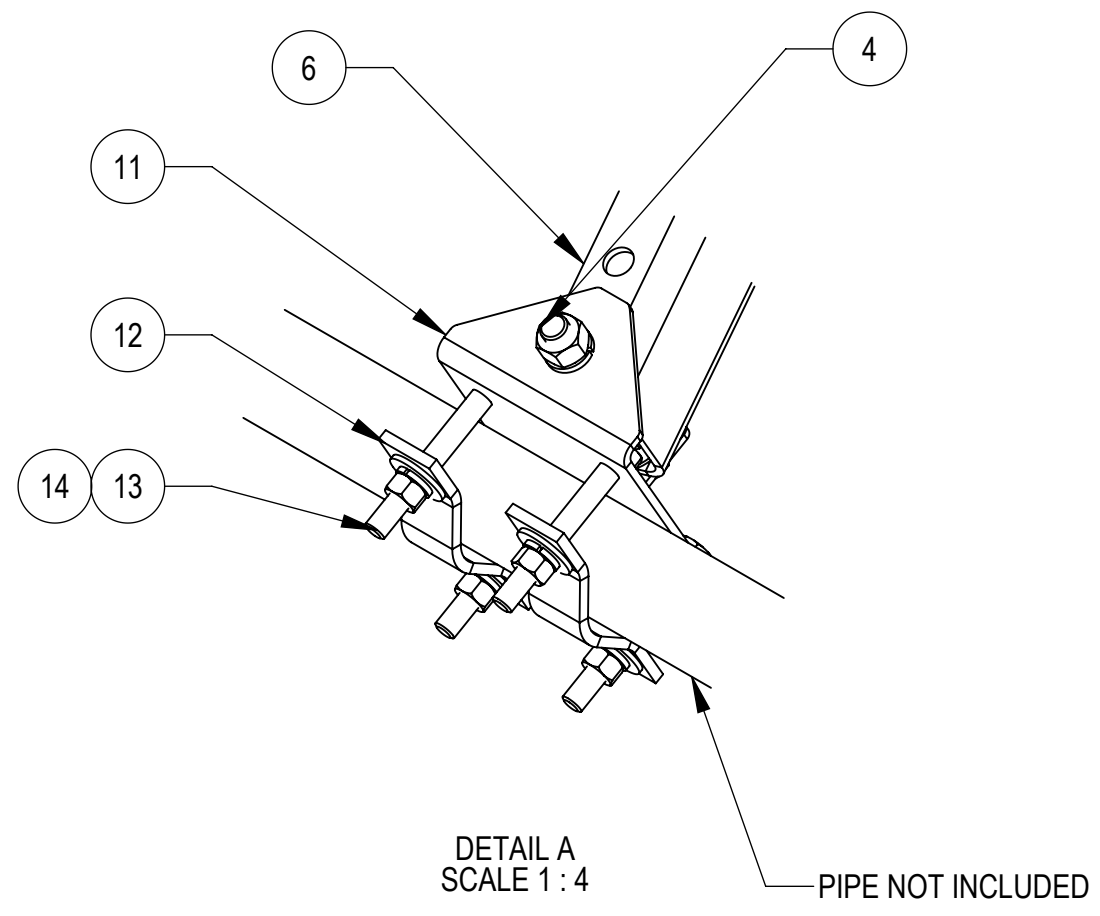


ITEM NO.	VSRC-1100	DESCRIPTION	QTY.	WEIGHT	NOTE NO.
1	MTC328602	WELDMENT, LIGHT DUTY 10-50 RINGMOUNT	3	26.39 LBS	
2	MT-382-24	5/8" X 24" GALV THREADED ROD	6	2.07 LBS	
3	GB-04125	1/2" X 1-1/4" GALV BOLT KIT	6	0.13 LBS	
4	GB-05145	5/8" X 1-1/2" GALV BOLT KIT	48	0.25 LBS	
5	VSRC-2000	BRACKET, PIVOT	6	1.77 LBS	
6	MCPM-2100	ARM, 31.5" SUPPORT	12	10.72 LBS	
7	GWF-05	5/8" GALV FLAT WASHER, 1.7OD	48	0.04 LBS	
8	VSRC-1100	BRACKET, PIVOT ATTACHMENT	3	2.04 LBS	
9	VSRC-1200	BRACKET, PIVOT ATTACHMENT WELD PART	3	0.173 LBS	
10	GB-05365	5/8" X 3-3/4" GALV BOLT KIT	3	1.0 LBS	
11	VSRC-3000	CHANNEL MOUNT FOR VSRC	6	2.33 LBS	
12	ACP10	1.5" - 3.5" O.D. CLAMP HALF	12	0.6 LBS	
13	1204FTB	1/2" x 4" FULL THREAD GALV. BOLT	24	0.28 LBS	
14	GWF-04	1/2" GALV FLAT WASHER	48	0.04 LBS	
15	GWF-05	5/8" GALV LOCK WASHER	12	0.04 LBS	
16	GN-05	5/8" GALV HEX NUT	12	0.04 LBS	

COMMSCOPE, INC. OF NORTH CAROLINA

TOLERANCES		SAP MATERIAL MASTER							
1 PLACE .X ± 0.25	3 PLACE .XXX ± 0.06	VSRC-MM-1550							
2 PLACE .XX ± 0.12	ANGLES ± 2°								
FINISH SEE NOTE 3.2		MATERIAL SEE BOM							
UNLESS OTHERWISE SPECIFIED DIMENSIONS ARE IN INCHES INTERPRET PER ANSI Y 14.5M-1994		VERTICAL STABILIZER CHANNEL MP 15 TO 50							
NAME	DATE			TITLE					
CE XZ1054	10/18/2021	VSRC-MM-1550							
RW XZ1054	11/30/2021								
AD BA1025	11/30/2021								
RE XZ1054	12/01/2021								
ECN 15185PC	SCALE 1:24	DOCUMENT NO.							
SIZE	Auth Group	INSL	MODEL						
C			VERSION	STATUS	REVISION	VERSION	STATUS	REVISION	SHEET
			00	RE	A	00	RE	A	1 OF 4

DENSITY		lbs/in ³
MASS	357.55	lbs
VOLUME	1262.57	in ³
SURFACE AREA	17266.92	in ²
HEIGHT		
LENGTH		
WIDTH		



COMMSCOPE, INC. OF NORTH CAROLINA				
TITLE VERTICAL STABILIZER CHANNEL MP 15 TO 50				
SIZE C	SCALE 1:24	DOCUMENT NO. VSRC-MM-1550		
		DRAWING		SHEET 2 OF 4
		VERSION 00	STATUS RE	

4

3

2

1

D

D

C

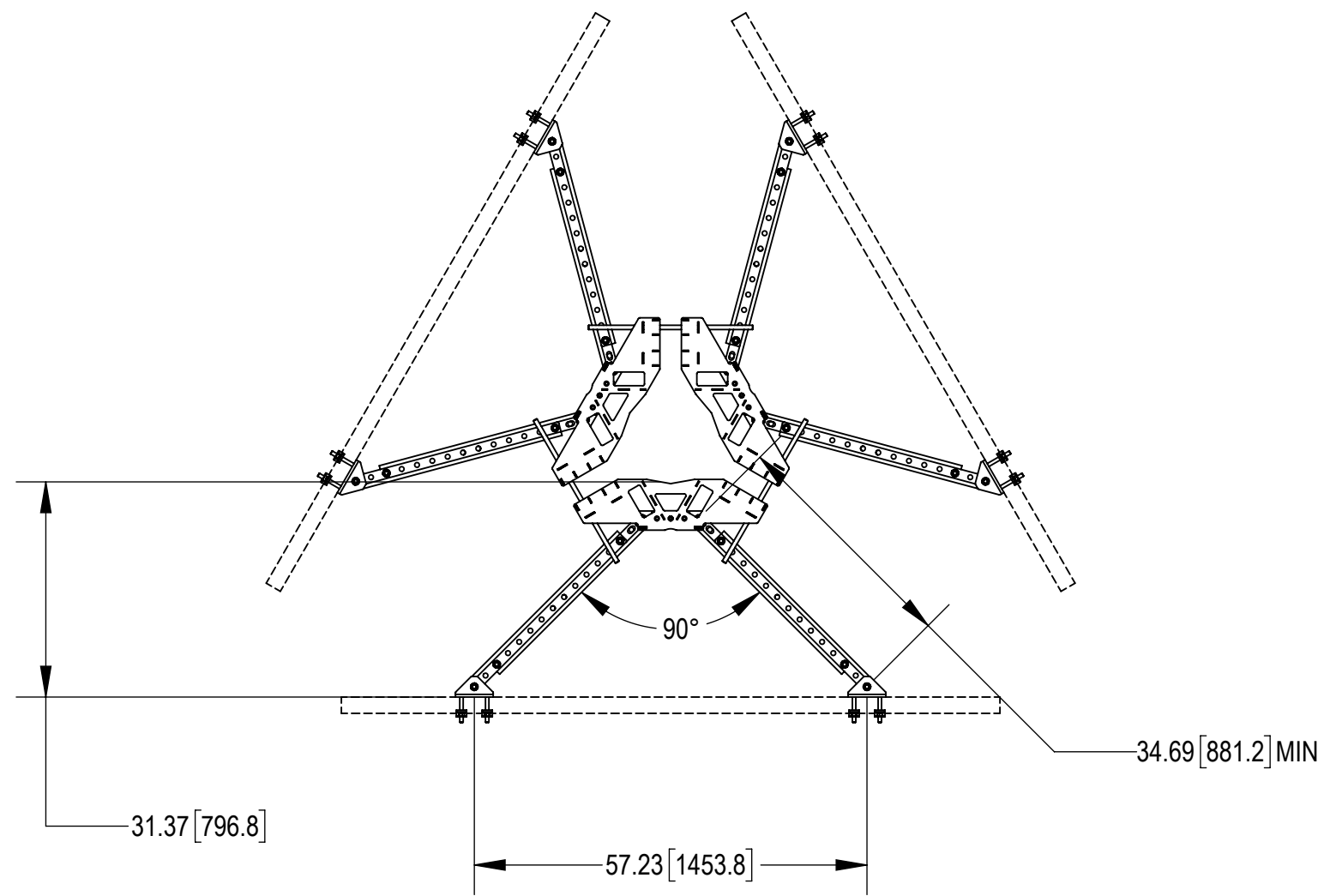
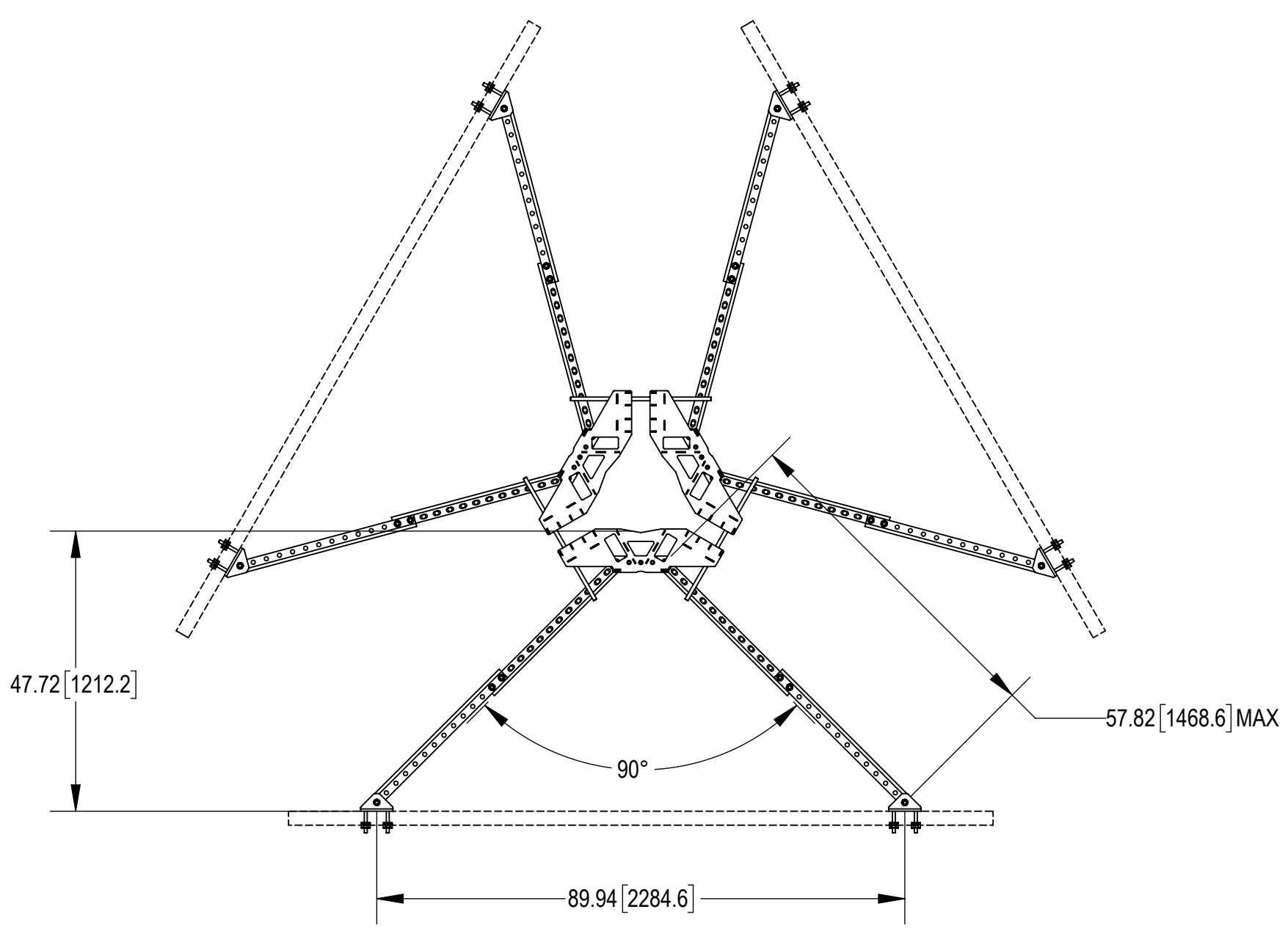
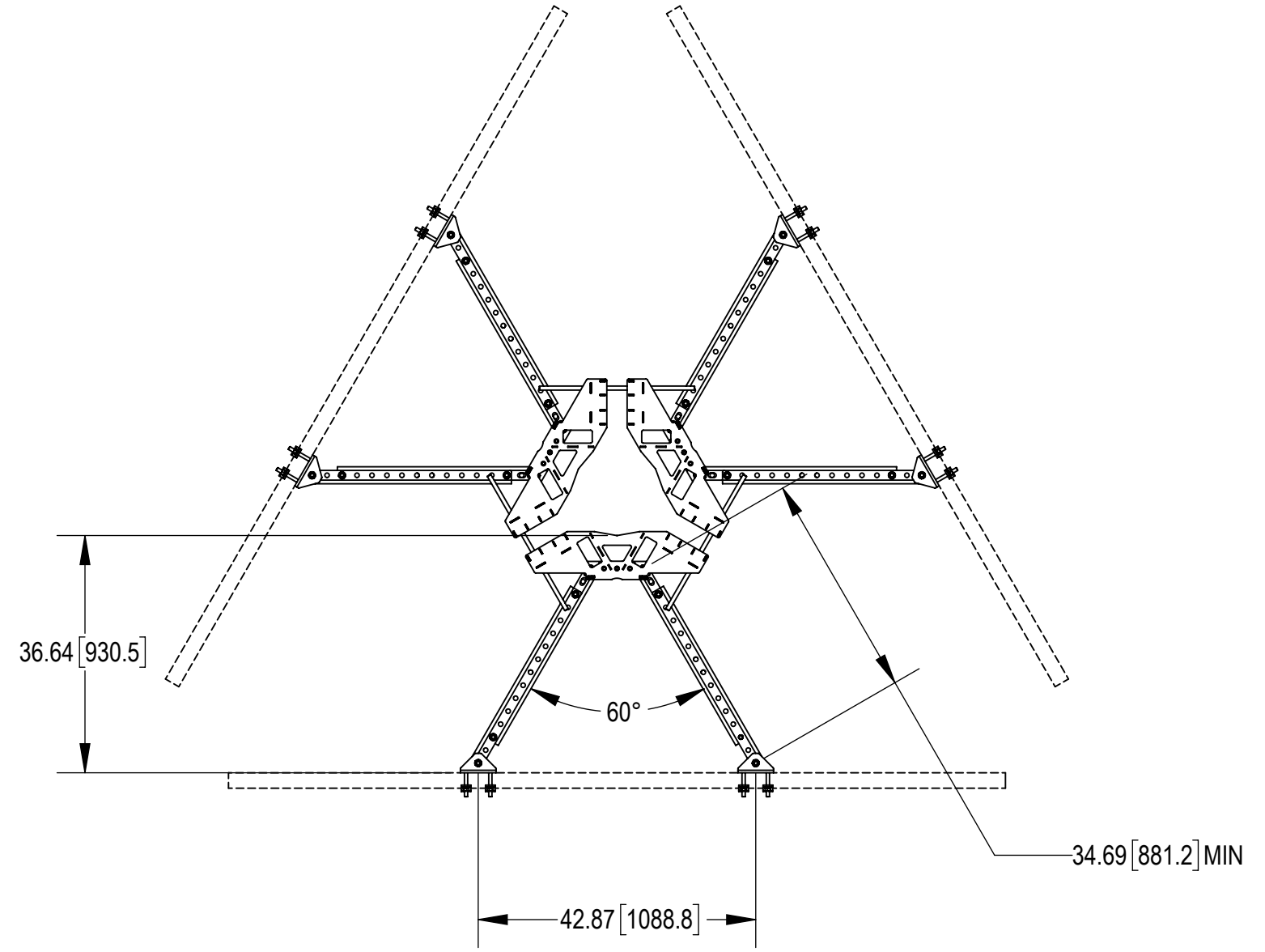
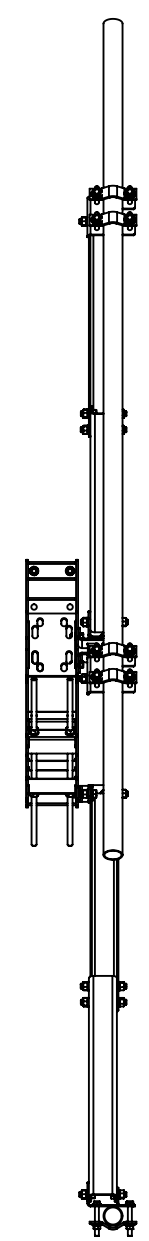
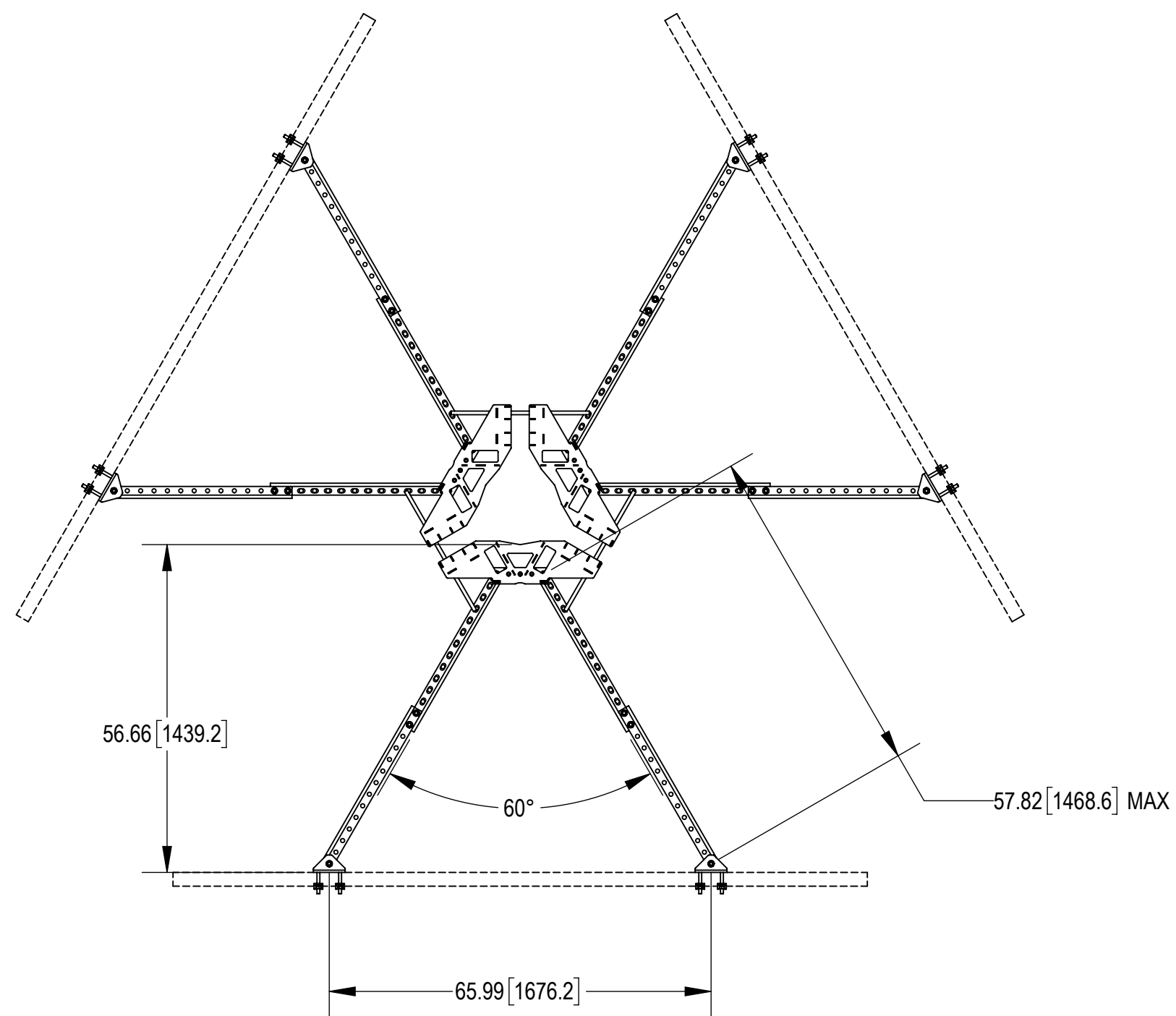
C

B

B

A

A



COMMSCOPE, INC. OF NORTH CAROLINA				
TITLE VERTICAL STABILIZER CHANNEL MP 15 TO 50				
SIZE C	SCALE 1:24	DOCUMENT NO. VSRC-MM-1550		
		DRAWING		SHEET
		VERSION	STATUS	REVISION
		00	RE	A
				3 OF 4

© 2021 CommScope, Inc. Confidential

4

3

2

1

4

3

2

1

D

D

C

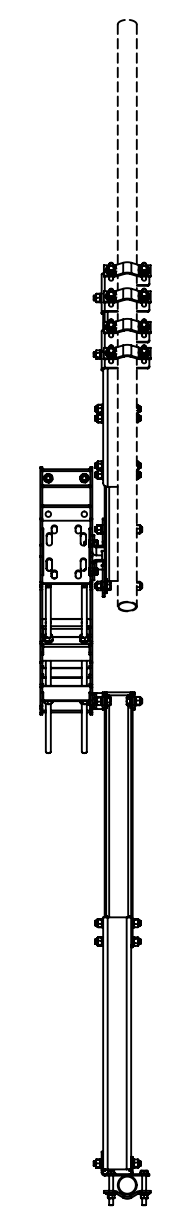
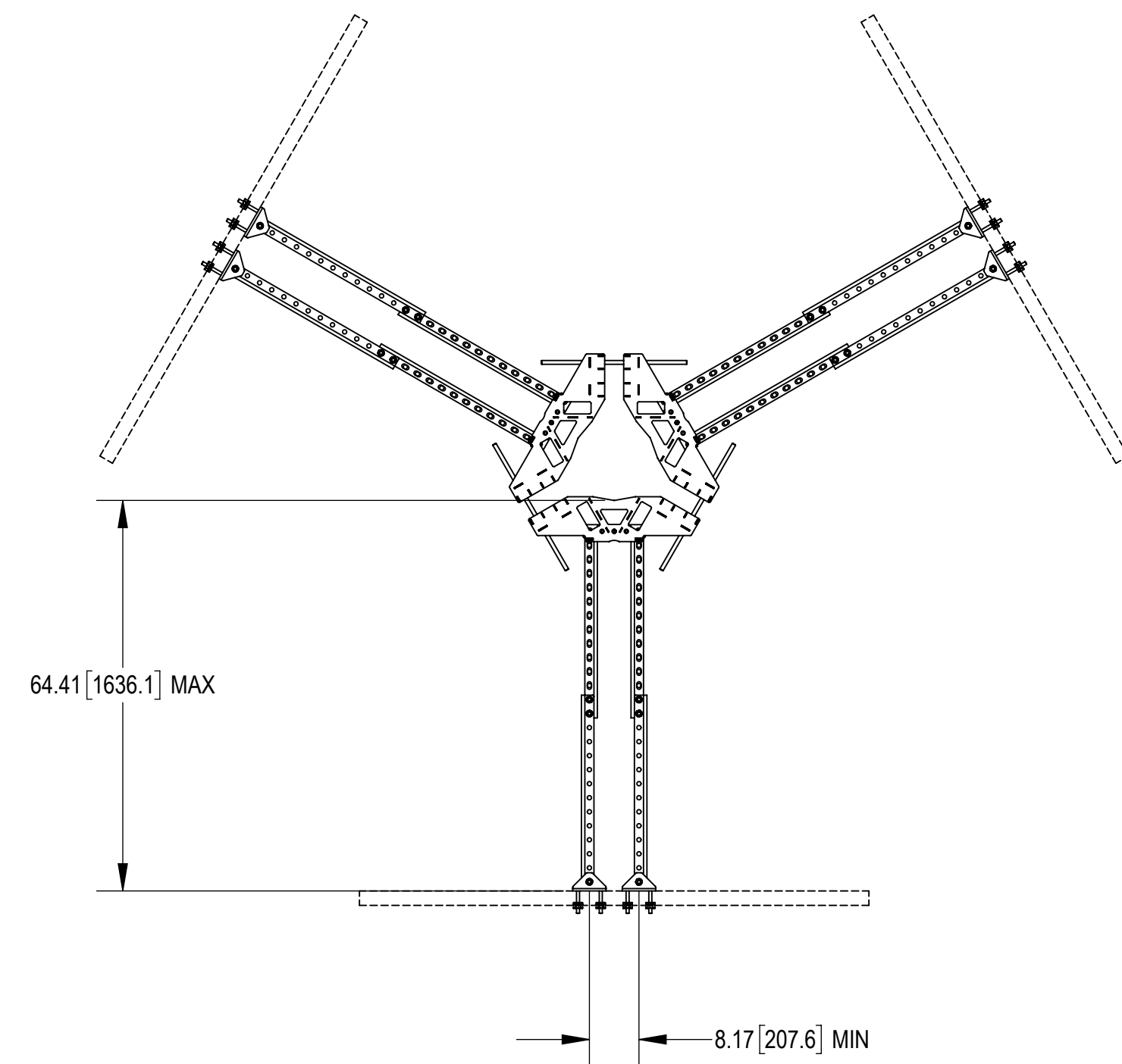
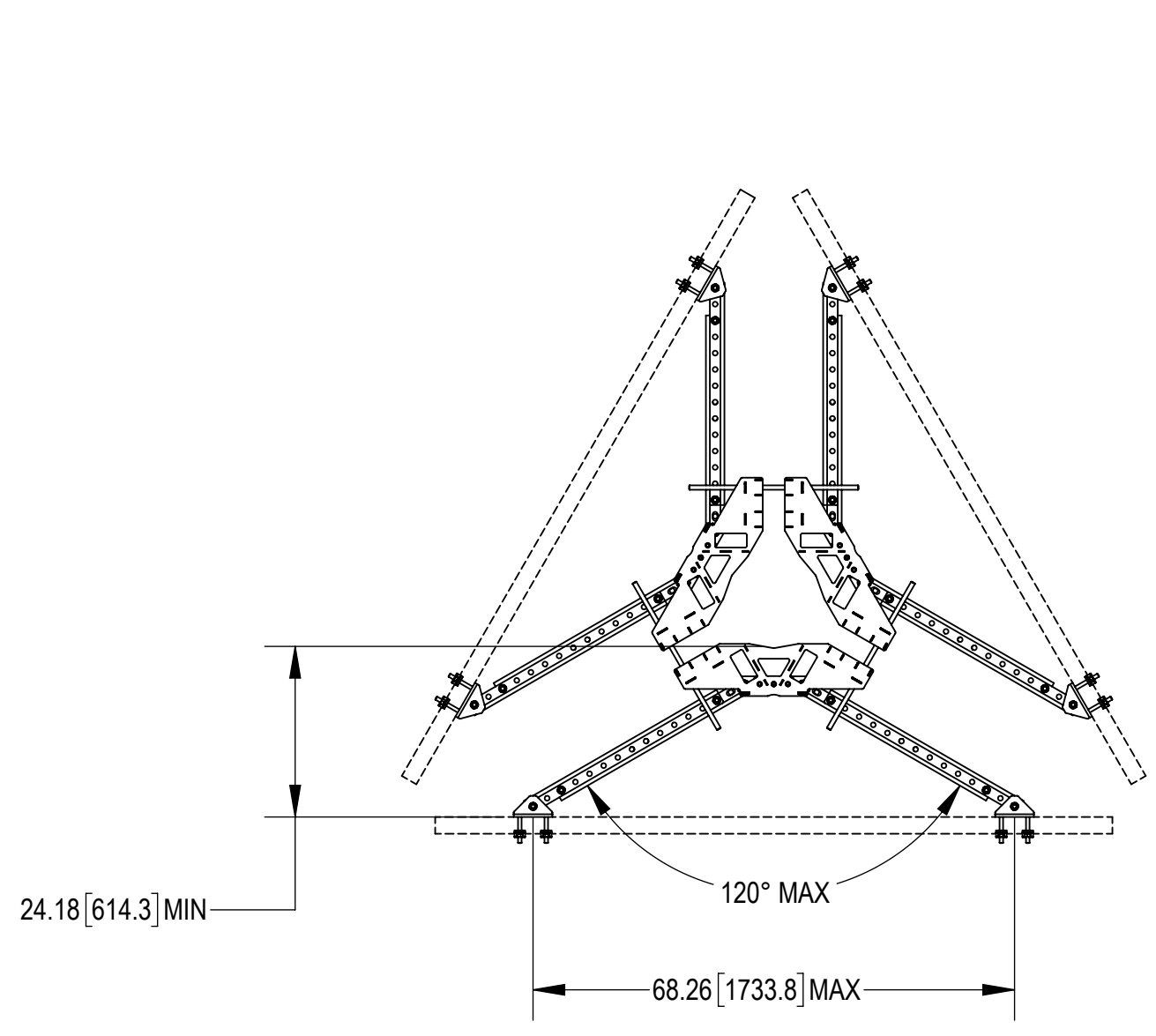
C

B

B

A

A



COMMSCOPE, INC. OF NORTH CAROLINA				
TITLE VERTICAL STABILIZER CHANNEL MP 15 TO 50				
SIZE C	SCALE 1:24	DOCUMENT NO. VSRC-MM-1550		
		DRAWING		SHEET 4 OF 4
		VERSION 00	STATUS RE	

© 2021 CommScope, Inc. Confidential

4

3

2

1

