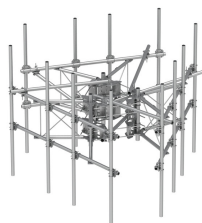


MCG23HDX-10M996



G23HDX High Capacity 3-Sector Monopole Sector Frame, 10.5 ft x 2.88 in OD face pipes, includes nine 2.88 OD x 96 in pipes

Product Classification

| | |
|----------------|-------------------------------------|
| Product Type | High capacity monopole sector frame |
| Product Series | G2 |
| Ordering Note | NSTD445 Compliant |

General Specifications

| | |
|-------------------|-------------------------------------|
| Mounting | Monopole, 381–1270 mm (15–50 in) OD |
| Pipe, quantity | 9 |
| Sectors, quantity | 3 |

Dimensions

| | |
|----------------------------|----------------------|
| Height | 2,438.4 mm 96 in |
| Face Width | 3.2 m 10.5 ft |
| Width | 3,200.4 mm 126 in |
| Pipe Length | 2,438.4 mm 96 in |
| Face Support Pipe Diameter | 73.025 mm 2.875 in |
| Mounting Diameter, maximum | 1270 mm 50 in |
| Mounting Diameter, minimum | 381 mm 15 in |
| Pipe Outer Diameter | 73.025 mm 2.875 in |
| Stand-off Distance | 1,066.8 mm 42 in |

Material Specifications

| | |
|---------------|--------------------------|
| Material Type | Hot dip galvanized steel |
|---------------|--------------------------|

Mechanical Specifications

| | |
|-------------------------|---|
| Wind Rating | For Specifications, please contact your local ANDREW representative |
| Wind Rating Test Method | TIA/EIA-222 |

MCG23HDX-10M996

Packaging and Weights

| | |
|--------------------|---|
| Included | Mounting hardware Pipe mounts Plain end pipes (9) Ring mounts (2) Sector frames (3) Stiff arm |
| Packaging quantity | 1 |
| Weight, net | 1,239.214 kg 2732 lb |

Regulatory Compliance/Certifications

| Agency | Classification |
|------------|-----------------------------------|
| CHINA-ROHS | Above maximum concentration value |
| ROHS | Compliant/Exempted |
| UK-ROHS | Compliant/Exempted |



* Footnotes

| | |
|-------------|--|
| Wind Rating | BWS—Base Wind Speed; FBC—Florida Building Code |
|-------------|--|