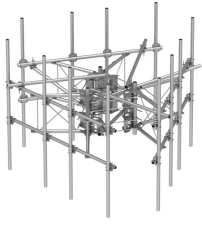


# MCG23HDX-14M15120

---



G23HDX High Capacity 3-Sector Monopole Sector Frame, 14.5 ft x 2.88 in OD face pipes, includes fifteen 2.88 OD x 120 in pipes

## Product Classification

<b>Product Type</b>	High capacity monopole sector frame
<b>Product Series</b>	G2
<b>Ordering Note</b>	NSTD445 Compliant

## General Specifications

<b>Mounting</b>	Monopole, 381–1270 mm (15–50 in) OD
<b>Pipe, quantity</b>	15
<b>Sectors, quantity</b>	3

## Dimensions

<b>Height</b>	3,048 mm   120 in
<b>Face Width</b>	4.42 m   14.5 ft
<b>Width</b>	4,419.6 mm   174 in
<b>Pipe Length</b>	3,048 mm   120 in
<b>Face Support Pipe Diameter</b>	73.025 mm   2.875 in
<b>Mounting Diameter, maximum</b>	1270 mm   50 in
<b>Mounting Diameter, minimum</b>	381 mm   15 in
<b>Pipe Outer Diameter</b>	73.025 mm   2.875 in
<b>Stand-off Distance</b>	1,066.8 mm   42 in

## Material Specifications

<b>Material Type</b>	Hot dip galvanized steel
----------------------	--------------------------

## Mechanical Specifications

<b>Wind Rating</b>	For Specifications, please contact your local ANDREW representative
<b>Wind Rating Test Method</b>	TIA/EIA-222

# MCG23HDX-14M15120

---

## Packaging and Weights

<b>Included</b>	Mounting hardware   Pipe mounts   Plain end pipes   Ring mounts (2)   Sector frames (3)   Stiff arm
<b>Packaging quantity</b>	1

## Regulatory Compliance/Certifications

<b>Agency</b>	<b>Classification</b>
CHINA-ROHS	Above maximum concentration value
ROHS	Compliant/Exempted
UK-ROHS	Compliant/Exempted



## \* Footnotes

<b>Wind Rating</b>	BWS—Base Wind Speed; FBC—Florida Building Code
--------------------	--