

RVV-65B-R3VB



6-port sector antenna, 2x 694-960 and 4x 1695-2690 MHz, 65° HPBW, 3x RET

- All Internal RET actuators are connected in “Cascaded SRET” configuration
- Retractable tilt indicator rods
- Uses the 4.3-10 connector which is 40 percent smaller than the 7-16 DIN connector

General Specifications

Antenna Type	Sector
Band	Multiband
Color	Light Gray (RAL 7035)
Grounding Type	RF connector inner conductor and body grounded to reflector and mounting bracket
Performance Note	Outdoor usage
Radome Material	Fiberglass, UV resistant
Radiator Material	Aluminum
Reflector Material	Aluminum
RF Connector Interface	4.3-10 Female
RF Connector Location	Bottom
RF Connector Quantity, high band	0
RF Connector Quantity, mid band	4
RF Connector Quantity, low band	2
RF Connector Quantity, total	6

Remote Electrical Tilt (RET) Information

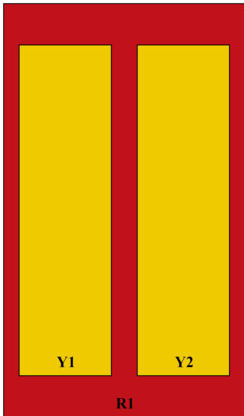
RET Hardware	CommRET v2
RET Interface	8-pin DIN Female 8-pin DIN Male
RET Interface, quantity	1 female 1 male
Input Voltage	10-30 Vdc
Internal RET	Low band (1) Mid band (2)
Power Consumption, active state, maximum	10 W
Power Consumption, idle state, maximum	2 W
Protocol	3GPP/AISG 2.0 (Single RET)

RVV-65B-R3VB

Dimensions

Width	397 mm 15.63 in
Depth	157 mm 6.181 in
Length	1997 mm 78.622 in
Net Weight, without mounting kit	23.5 kg 51.809 lb

Array Layout



Array ID	Frequency (MHz)	RF Connector	HPBW	RET (SRET)	AISG No.	AISG RET UID
R1	694-960	1 - 2	65°	1	AISG1	CPxxxxxxxxxxxxR1
Y1	1695-2690	3 - 4	65°	2	AISG1	CPxxxxxxxxxxxxY1
Y2	1695-2690	5 - 6	65°	3	AISG1	CPxxxxxxxxxxxxY2

(Sizes of colored boxes are not true depictions of array sizes)

Port Configuration



Electrical Specifications

Impedance	50 ohm
------------------	--------

RVV-65B-R3VB

Operating Frequency Band	1695 – 2690 MHz 694 – 960 MHz
Polarization	±45°
Total Input Power, maximum	800 W

Electrical Specifications

Frequency Band, MHz	694–790	790–890	890–960	1695–1920	1920–2180	2300–2500	2500–2690
Gain, dBi	15.3	16	16.4	17.5	18	18.4	18.3
Beamwidth, Horizontal, degrees	67	64	60	66	64	64	62
Beamwidth, Vertical, degrees	12.4	10.7	9.6	5.5	4.9	4.3	4
Beam Tilt, degrees	2–15	2–15	2–15	2–12	2–12	2–12	2–12
USLS (First Lobe), dB	19	23	23	21	21	20	15
Front-to-Back Ratio, Copolarization 180° ± 30°, dB	29	31	30	28	30	31	29
Isolation, Cross Polarization, dB	28	28	28	28	28	28	28
Isolation, Inter-band, dB	28	28	28	28	28	28	28
VSWR Return loss, dB	1.5 14.0	1.5 14.0	1.5 14.0	1.5 14.0	1.5 14.0	1.5 14.0	1.5 14.0
PIM, 3rd Order, 2 x 20 W, dBc	-150	-150	-150	-150	-150	-150	-150
Input Power per Port, maximum, watts	250	250	250	150	150	150	150

Mechanical Specifications

Wind Loading @ Velocity, frontal	535.0 N @ 150 km/h (120.3 lbf @ 150 km/h)
Wind Loading @ Velocity, lateral	290.0 N @ 150 km/h (65.2 lbf @ 150 km/h)
Wind Loading @ Velocity, rear	830.0 N @ 150 km/h (186.6 lbf @ 150 km/h)
Wind Speed, maximum	241 km/h (150 mph)

Packaging and Weights

Width, packed	492 mm 19.37 in
Depth, packed	277 mm 10.906 in
Length, packed	2197 mm 86.496 in
Weight, gross	34 kg 74.957 lb

Regulatory Compliance/Certifications

Agency	Classification
--------	----------------

RVV-65B-R3VB

CHINA-ROHS	Below maximum concentration value
ISO 9001:2015	Designed, manufactured and/or distributed under this quality management system
REACH-SVHC	Compliant as per SVHC revision on www.commscope.com/ProductCompliance
ROHS	Compliant
UK-ROHS	Compliant



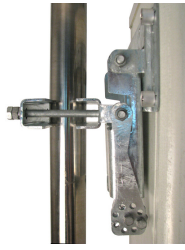
Included Products

BSAMNT-B95-03	–	Wide Profile Antenna Downtilt Mounting Kit for 2.4 - 4.5 in (60 - 115 mm) OD round members. Kit contains one scissor top bracket set and one bottom bracket set.
---------------	---	--

* Footnotes

Performance Note	Severe environmental conditions may degrade optimum performance
-------------------------	---

BSAMNT-B95-03



Wide Profile Antenna Downtilt Mounting Kit for 2.4 - 4.5 in (60 - 115 mm) OD round members. Kit contains one scissor top bracket set and one bottom bracket set.

Product Classification

Product Type Downtilt mounting kit

General Specifications

Application Outdoor

Color Silver

Dimensions

Compatible Diameter, maximum 114.3 mm | 4.5 in

Compatible Diameter, minimum 61 mm | 2.402 in

Weight, net 4.5 kg | 9.921 lb

Material Specifications

Material Type Galvanized steel

Packaging and Weights

Included Brackets | Hardware

Packaging quantity 2

Regulatory Compliance/Certifications

Agency

CE
ISO 9001:2015

Classification

Compliant with the relevant CE product directives
Designed, manufactured and/or distributed under this quality management system

