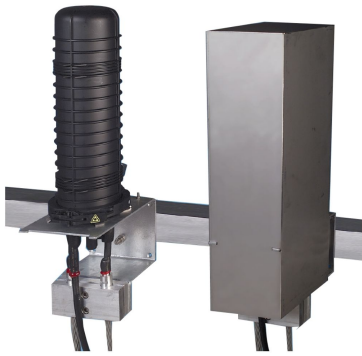


# FOSC-OPGW



## FOSC® OPGW Fiber Optic Splice Closure

The FOSC OPGW, part of the FOSC 400 closure family, is a single-ended closure system specially developed for use on the optical grounding wires of overhead electrical power lines. The closure is suitable for use above ground; it can be attached to high voltage towers, poles, walls or other support structures.

Key Features of the FOSC OPGW closures:

- Single-ended design with valve
- A galvanized steel mounting frame holds the thermoplastic dome and base and the OPGW cable clamps
- A pole mounting kit is included which allows the closure to be mounted on a traverse strut of a high voltage tower without the need to drill holes in the metal construction
- A stainless steel shot-gun protection enclosure is optionally available. It permits the termination and sealing of:
  - 2 OPGW cables
  - 2 ADSS or conventional buried fiber optic cables
- Cable seals are manufactured from heatshrinkable material
- Internal storage utilizes FOSC splice trays which are hinged for access to any splice without disturbing other trays
- Butt splice closure
- Heat-shrink technology
- Hinging splice trays
- Superior fiber management for optical grounding wires

## Product Classification

<b>Regional Availability</b>	Asia   EMEA   Latin America   North America
<b>Product Type</b>	Single-ended, round fiber closure
<b>Product Brand</b>	FOSC®
<b>Product Series</b>	FOSC OPGW

## General Specifications

<b>Cable Entry Drop Port Style</b>	Round
<b>Cable Entry Main Port Style</b>	Round
<b>Cable Ports Quantity, total</b>	1 oval port (2 cables) + 4 round ports
<b>Cable Sealing Type</b>	Heat shrink
<b>Closure Sealing Type</b>	Dome-to-base clamp with O-ring

# FOSC-OPGW

<b>Closure Style</b>	Single-ended
<b>Color</b>	Black
<b>Mounting</b>	Pole   Strand   Wall
<b>Splicing Type, Supported</b>	Mass fusion   Single fusion

## Splicing Configuration

Splice capacity	FOSC-400A4		FOSC-400B4
	Splices at tray edges	Splices in modules	
Number of splice trays <sup>(a)</sup>	3	2	4(6)
Single fiber <sup>(b)</sup>	72	48	96(144)
Cable ports			
4 round ports for 1 cable each with ø range	5 - 19 mm		5 - 19 mm

(a) The B4 version can be fitted with 5 or 6 trays. However, this option must be selected when the closure is first ordered, as it requires special engineering and the standard base cannot be upgraded to accept 5 or 6 trays.

(b) Splicing capacity is based on 45 mm fusion splice protectors.

## Ordering Tree

FOSC - OPGW - XX XXX - X - X X X

### Closure size

A4	FOSC 400 A4
B4	FOSC 400 B4

### Type of splicing trays

Closure Size	Tray Options	
	Splices at Tray edges	Splices at modules
A4	S08, S24, A24	12, 24
B4	S12, S24, A24	12, 24

(S or A for SMOUV or ANT splice protectors)  
(S08, S12, S24 European style splice trays)

### # Pre-installed trays

1, 2 or 3	For A4 closures
1, 2 ...6	For B4 closures

### Shot gun protection enclosure

C	With protection enclosure
N	Without protection enclosure

### Type of splicing trays

Cable type	Cable dia. (mm)	OPGW cable type (*)		
		(A) CC with plastic loose tube	(B) Metal loose tubes only	Select
OPGW	9-12	7.5	3	A
	12-14	10.5	3	B
	14-16	12.5	3	C
	16-18	14	3	D
FO cable	5-19	N/A	N/A	E

### 1st cable feed-through

Same options are for 2nd cable feed-through, except option E

## Material Specifications

<b>Material Type</b>	Impact-resistant polymer
----------------------	--------------------------

## Environmental Specifications

<b>Environmental Space</b>	Above ground
<b>Qualification Standards</b>	IEC 61300, 6 m waterhead

# FOSC-OPGW

---

## Regulatory Compliance/Certifications

**Agency**

ISO 9001:2015



**Classification**

Designed, manufactured and/or distributed under this quality management system