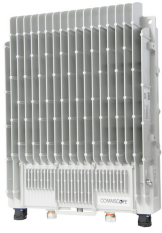


# 7845390-0001 | CAP L2 18/21/23T/26 C-PE



Carrier Access Point with MIMO 2x2 Radio Modules for Low Power DCS 1800, IMT 2100, TDD 2300 and IMT 2600 Applications, Copper fed, PoE++

## Product Classification

<b>Product Type</b>	Access point
<b>Product Brand</b>	ERA®
<b>Product Series</b>	CAP L2

## General Specifications

<b>Fan Kit</b>	Not included
<b>Fed Type</b>	Copper fed
<b>Note</b>	Detailed Product Specifications are available. Please contact your local CommScope representative.   ETSI compliance   For OFCOM compliance, please contact your local CommScope representative
<b>Power Class</b>	Low
<b>Powering Type</b>	PoE powered

## Electrical Specifications

<b>License Band</b>	DCS 1800   IMT 2100   IMT 2600   TDD 2300 Higher
---------------------	--

## Included Products

7846281-01	–	Wall Mounting bracket to mount a CAP L2 to a wall
Wall Mounting bracket CAP L2		

# 7846281-01 | Wall Mounting bracket CAP L2

---



Wall Mounting bracket to mount a CAP L2 to a wall

## Product Classification

**Product Type** Mounting kit

**Product Brand** ERA®

## Dimensions

**Height** 220 mm | 8.661 in

**Width** 351 mm | 13.819 in

**Depth** 116 mm | 4.567 in

## Regulatory Compliance/Certifications

### Agency

### Classification

CHINA-ROHS

Below maximum concentration value

REACH-SVHC

Compliant as per SVHC revision on [www.commscope.com/ProductCompliance](http://www.commscope.com/ProductCompliance)

ROHS

Compliant

UK-ROHS

Compliant

