

1.0 GENERAL NOTES

- 1.1 ALL METRIC DIMENSIONS ARE IN BRACKETS [X.X]
- 1.2 FOR PATENT INFO: <https://www.cs-pat.com>

2.0 DESIGN NOTES

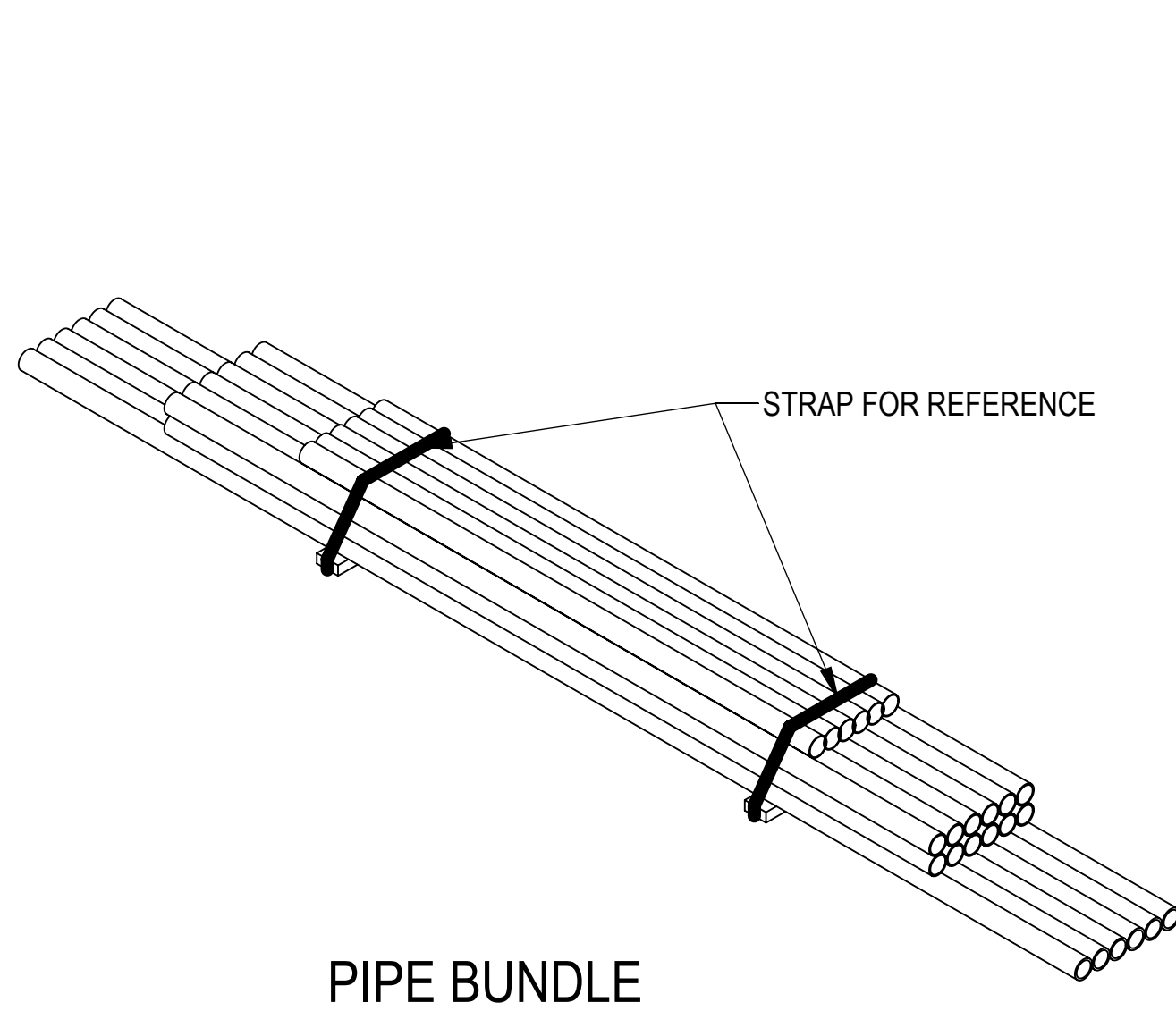
- 2.1 ANY HAZARDS OR OBSTRUCTIONS TO THE CLIMBING FACILITY AND SAFETY CLIMB MUST BE IDENTIFIED PRIOR TO INSTALLING THE APPURTENANCE. ADDITIONAL PRODUCTS MAY BE REQUIRED TO MAINTAIN THE INTEGRITY OF THE SAFETY CLIMB. DURING INSTALLATION, TEMPORARY AND/OR PERMANENT PRECAUTIONARY MEASURES SHOULD BE TAKEN TO PRESERVE THE CLIMBING FACILITY AND/OR SAFETY CLIMB.
- 2.2 FITS MONOPOLES 15" TO 50" OD.
- 2.3 MIN RECOMMENDED POLE THICKNESS 3/16"
- 3.0 MANUFACTURING/SPECIAL REQUIREMENTS
- 3.1 TIGHTEN ALL BOLTS SECURING FLAT PLATES BY THE TURN-OF-NUT METHOD. TIGHTEN ALL U-BOLTS USING TURN-OF-NUT METHOD WITH ATTENTION TO LEAVE EQUAL DISTANCE AND EQUAL FORCE ON EACH LEG OF THE U-BOLT.

4.0 TEST

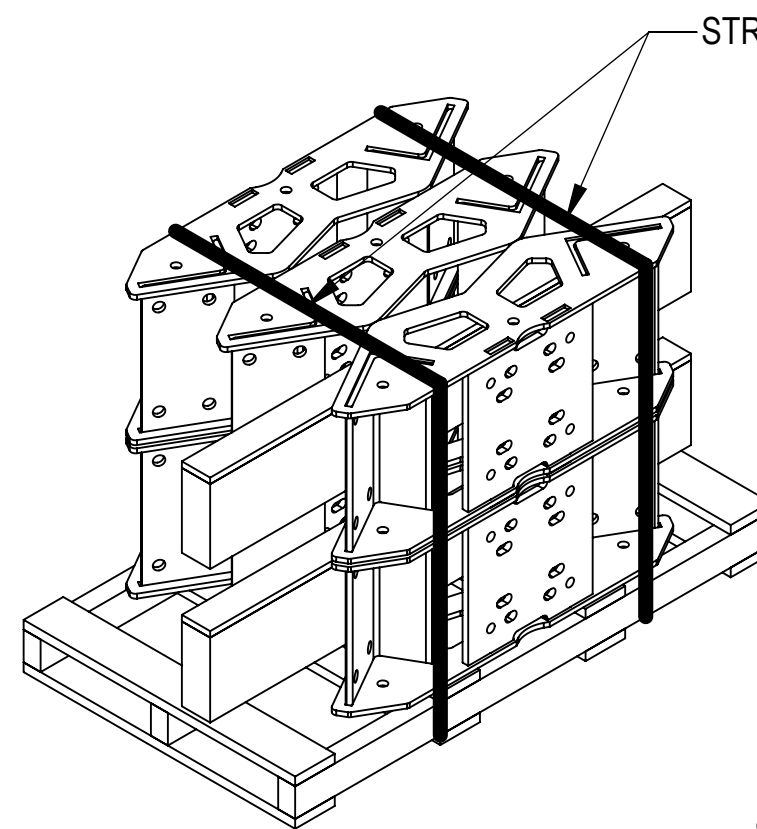
5.0 PACKAGING

- 5.1 PACKAGING SHALL MEET COMMSCOPE REQUIREMENTS PER DOCUMENT IS-PL-3005.
- 5.2 PRINTED DOCUMENT TO BE PLACED INSIDE POLYBAG AND THEN IN SHIPPING CONTAINER.
- 5.3 EXTRA HARDWARE MAY BE SUPPLIED, BAGGED AND SHIPPED.

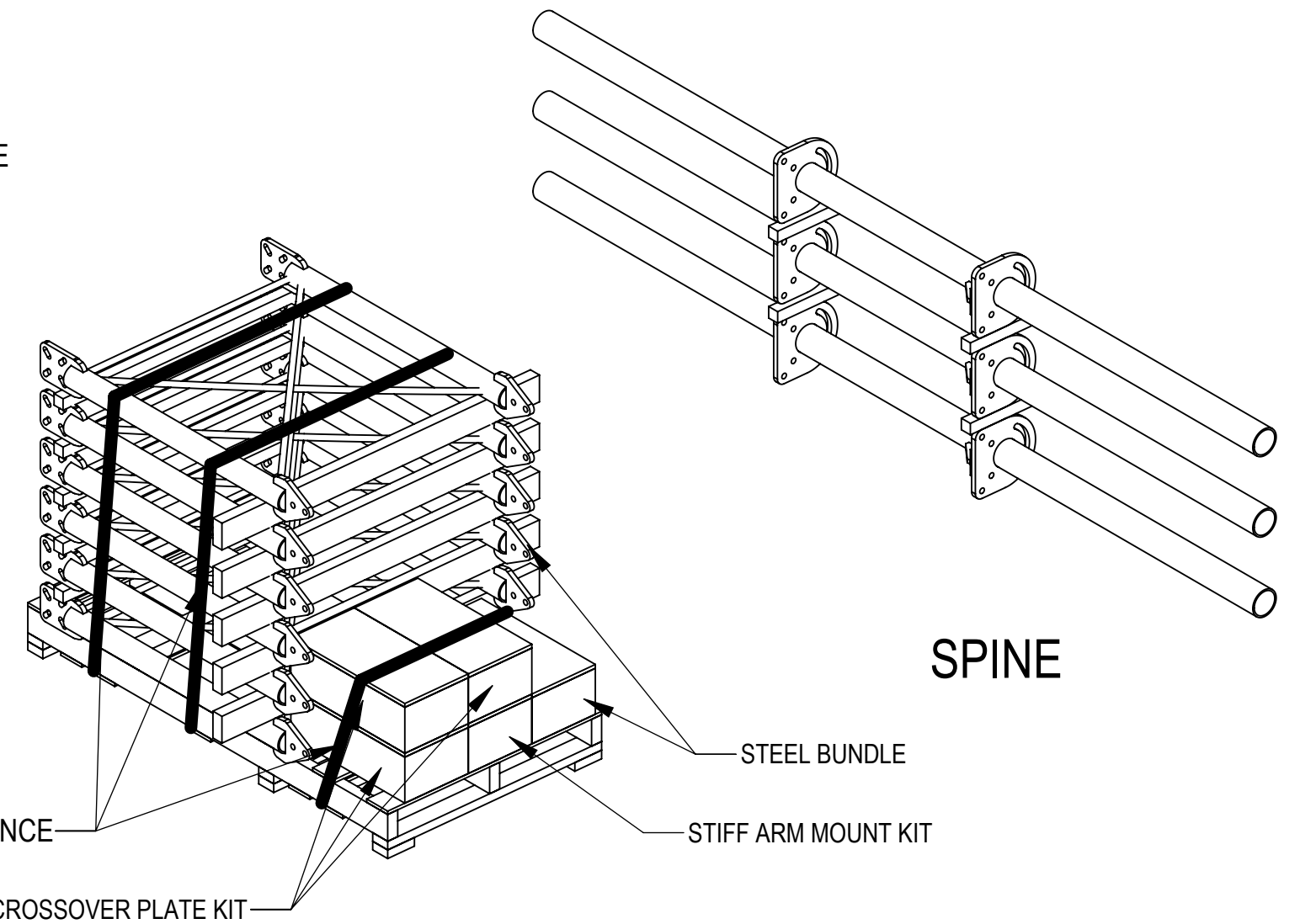
REVISIONS			
REV.	DESCRIPTION	DATE	APPROVED
A	INITIAL RELEASE	MRC 27JAN21	BCROSS 10256
B	CORRECTED INSTALLATION OF TIE BACK CORRECT TORQUE NOTES, CHANGED GRAPHIC TO REPRESENT	ZX1005 22OCT21	BCROSS 15083
C	MCG22HDX SERIES BOM STANDARDIZATION, UPDATED TOP MID ON DRAWING	YX1027 31MAY22	BCROSS 40149023CMO
D	SFG2398 WAS SFG2350	YMENG 05JAN24	YW1045 40185676CMO



PIPE BUNDLE



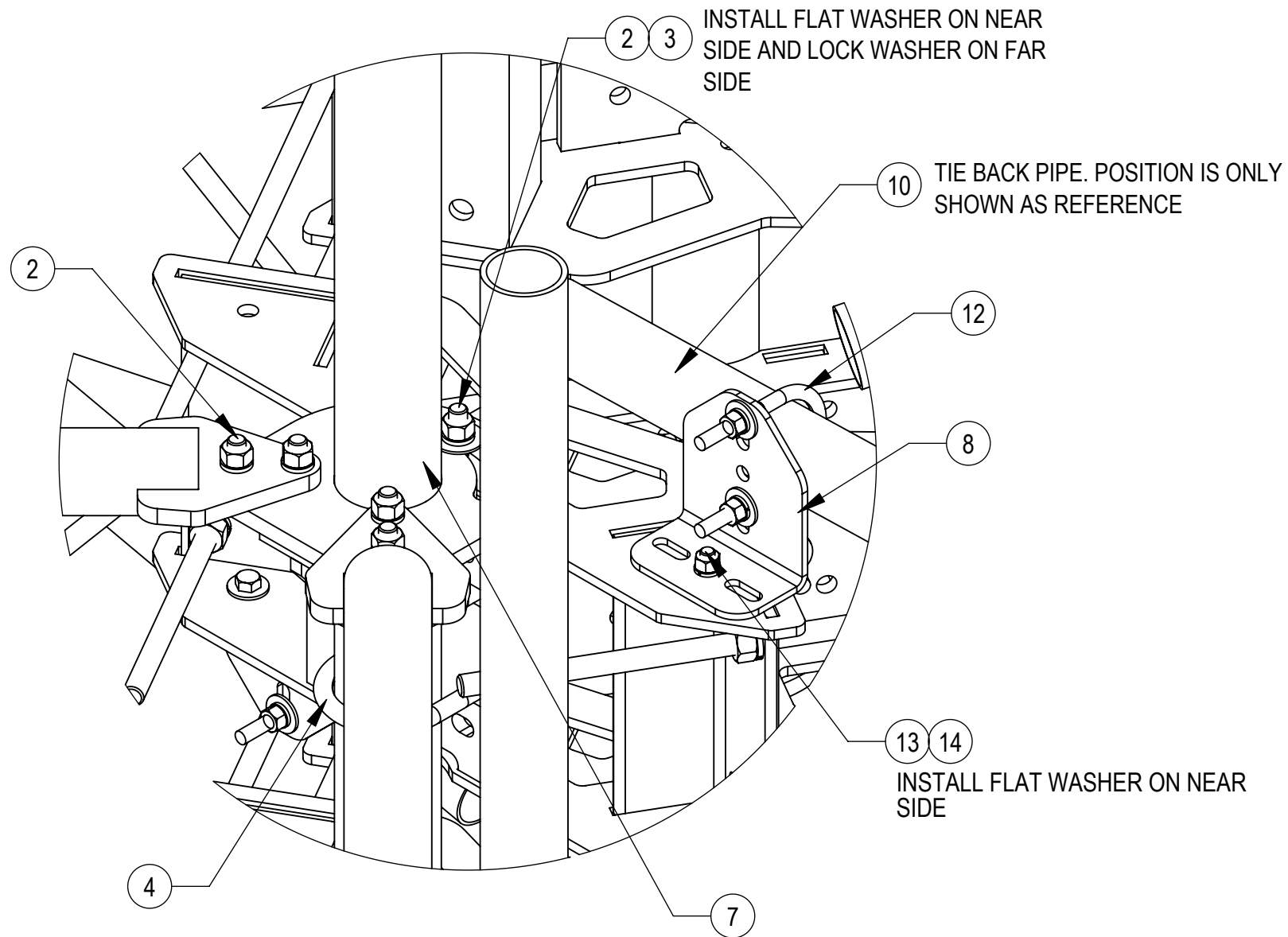
RING MOUNT



SPINE

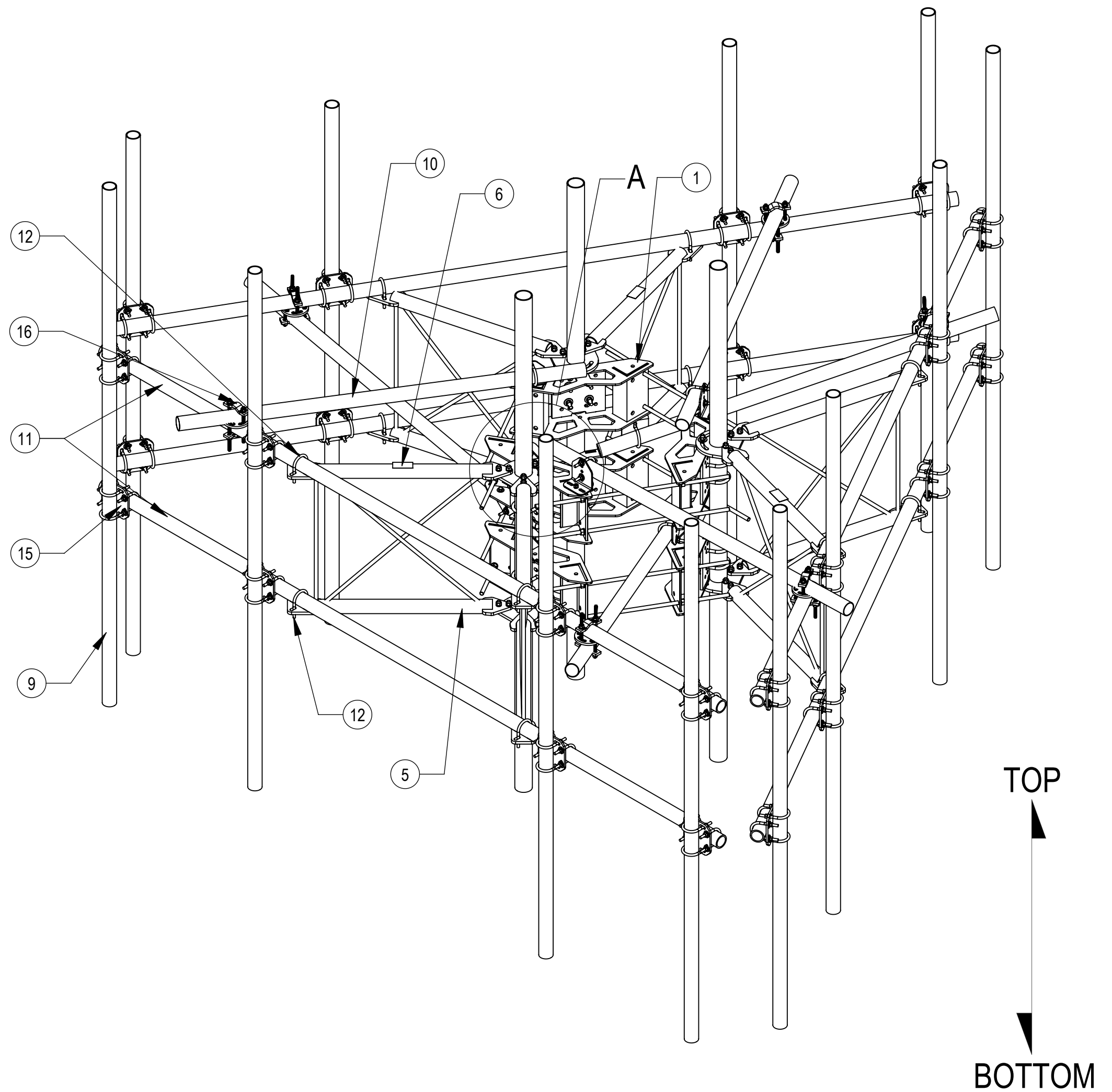
COMMSCOPE, INC. OF NORTH CAROLINA												
TOLERANCES						SAP MATERIAL MASTER						
1 PLACE .X[X] ± .25[6.3]			3 PLACE .XXX[X] ± .060[1.5]			SEE TABLE 1						
2 PLACE .XX[X] ± .12[3.0]			ANGLES ± 2°									
FINISH						MATERIAL						
UNLESS OTHERWISE SPECIFIED DIMENSIONS ARE IN INCHES INTERPRET PER ANSI Y 14.5M-1994		NAME	DATE	TITLE								
		CE	ES1081	12/04/20	MCG23RHDX SERIES							
		RW	YMENG	01/30/2024								
		AD	YW1045	01/30/2024								
		RE	YMENG	01/30/2024								
ECN	40185676CMO		SCALE									
				1:16		MCG23RHDX						
SIZE		Auth Group		INSL		MODEL			DRAWING			SHEET 1 OF 9
C		⊕		◁		VERSION	STATUS	REVISION	VERSION	STATUS	REVISION	
						03	RE	C	04	RE	D	

DENSITY	lbs/in³
MASS	lbs
VOLUME	in³
SURFACE AREA	in²
HEIGHT	
LENGTH	
WIDTH	



DETAIL A
SCALE 1 : 5

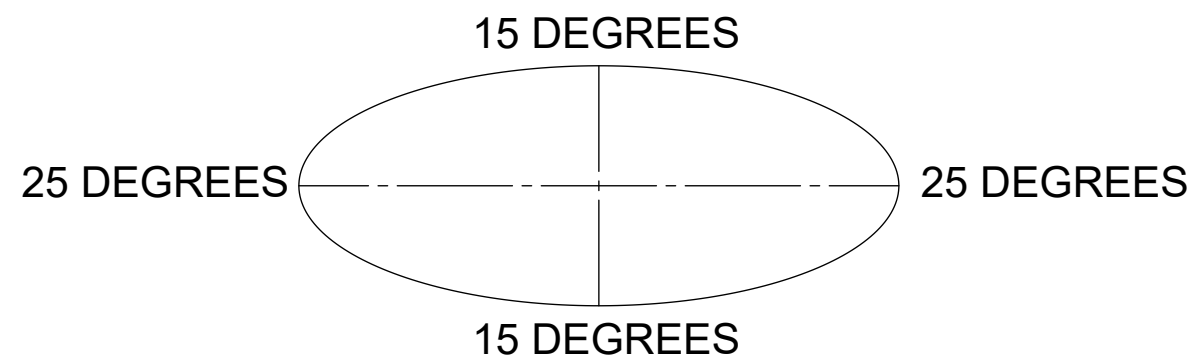
MCG23RHDX-14M12126 SHOWN FOR REFERENCE
(NOT ALL CONFIGURATIONS INCLUDE ALL ITEMS SEE NOTES IN TABLE)



COMPONENT PART NUMBERS PROVIDED FOR ASSEMBLY PURPOSES;
INDIVIDUAL COMPONENTS MAY BE SHIPPED AS PARTS WITHIN AN INCLUDED KIT.

ITEM	PART NO.	DESCRIPTION	QTY.	WEIGHT	NOTE NO.
1	MC-RM1550-3	15" - 50" OD RINGMOUNT	2	229.90 LBS	
2	GB-05225	5/8" X 2-1/4" GALV BOLT KIT	30	0.28 LBS	
3	GWF-05	5/8" GALV FLAT WASHER, 1.7OD	6	0.06 LBS	
4	GUB-53560	5/8" X 3-5/8" X 6" GALV U-BOLT	12	1.30 LBS	
5	SFG23175	ARM, STANDOFF - SFG23	6	63.28 LBS	
6	SFG2398	LABEL, SFG23RHDX	3	0.04 LBS	
7	SFG2204	WELDMENT, BACK VERTICAL ARM MOUNT	3	97.29 LBS	
8	XAU01	ANGLE, CROSSOVER, 1.9-3.5" X 1.9-3.5" OD	6	2.98 LBS	
9	MT-546-126	PIPE, 2.875"OD X 126"	12	61.05 LBS	PART NO. AND QTY SEE INDIVIDUAL DRAWING
10	MT546084120	2.88" OD X 84" LONG PIPE	6	24.81 LBS	
11	MT546174276	PIPE, 2.875"OD X 174"	6	111.49 LBS	PART NO. SEE INDIVIDUAL DRAWING
12	GUB-4352	1/2" X 3" X 5-1/4" GALV U-BOLT	18	0.71 LBS	
13	GB-04145	1/2" X 1-1/2" GALV BOLT KIT	6	0.13 LBS	
14	GWF-04	1/2" GALV FLAT WASHER	6	0.04 LBS	
15	XP-2525	CROSSOVER PLATE KIT, 2-7/8 OD X 2-7/8 OD	24	8.37 LBS	QTY SEE INDIVIDUAL DRAWING
16	XP-R	CROSSOVER PLATE, ROUND, UP TO 3.5" OD	6	6.20 LBS	

ALLOWABLE TIEBACK ANGLE
± 15 DEGREES VERTICAL
± 25 DEGREES HORIZONTAL



COMMSCOPE, INC. OF NORTH CAROLINA				
TITLE MCG23RHDX SERIES				
SIZE C	SCALE 1:32	DOCUMENT NO. MCG23RHDX		
DRAWING		VERSION	STATUS	REVISION
		04	RE	D
				SHEET 3 OF 9

4

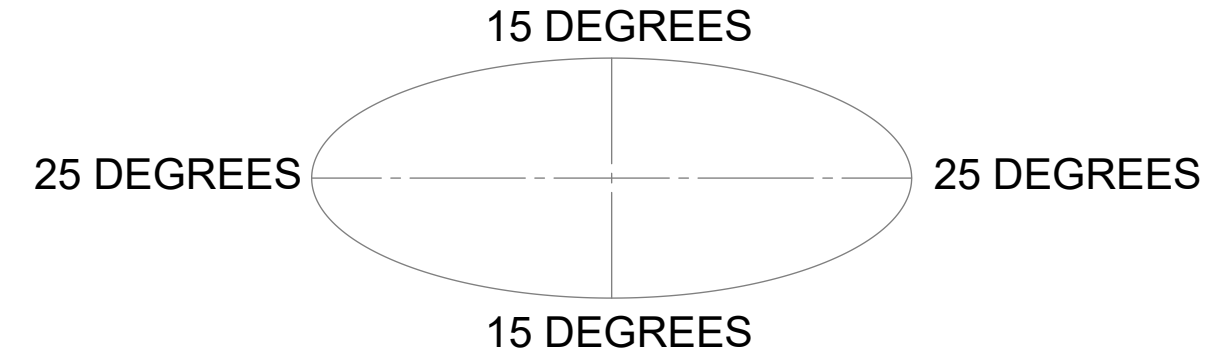
3

2

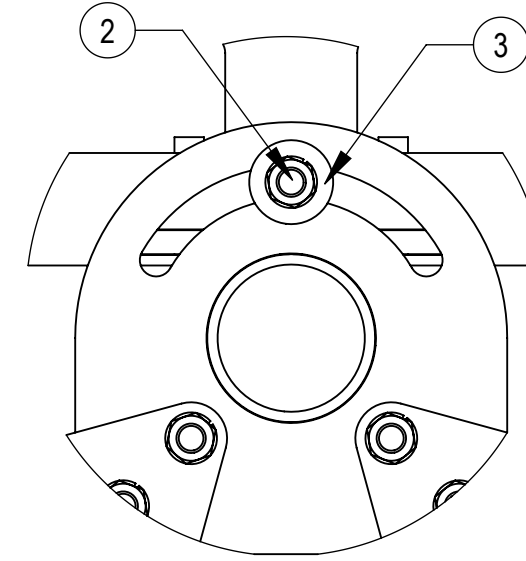
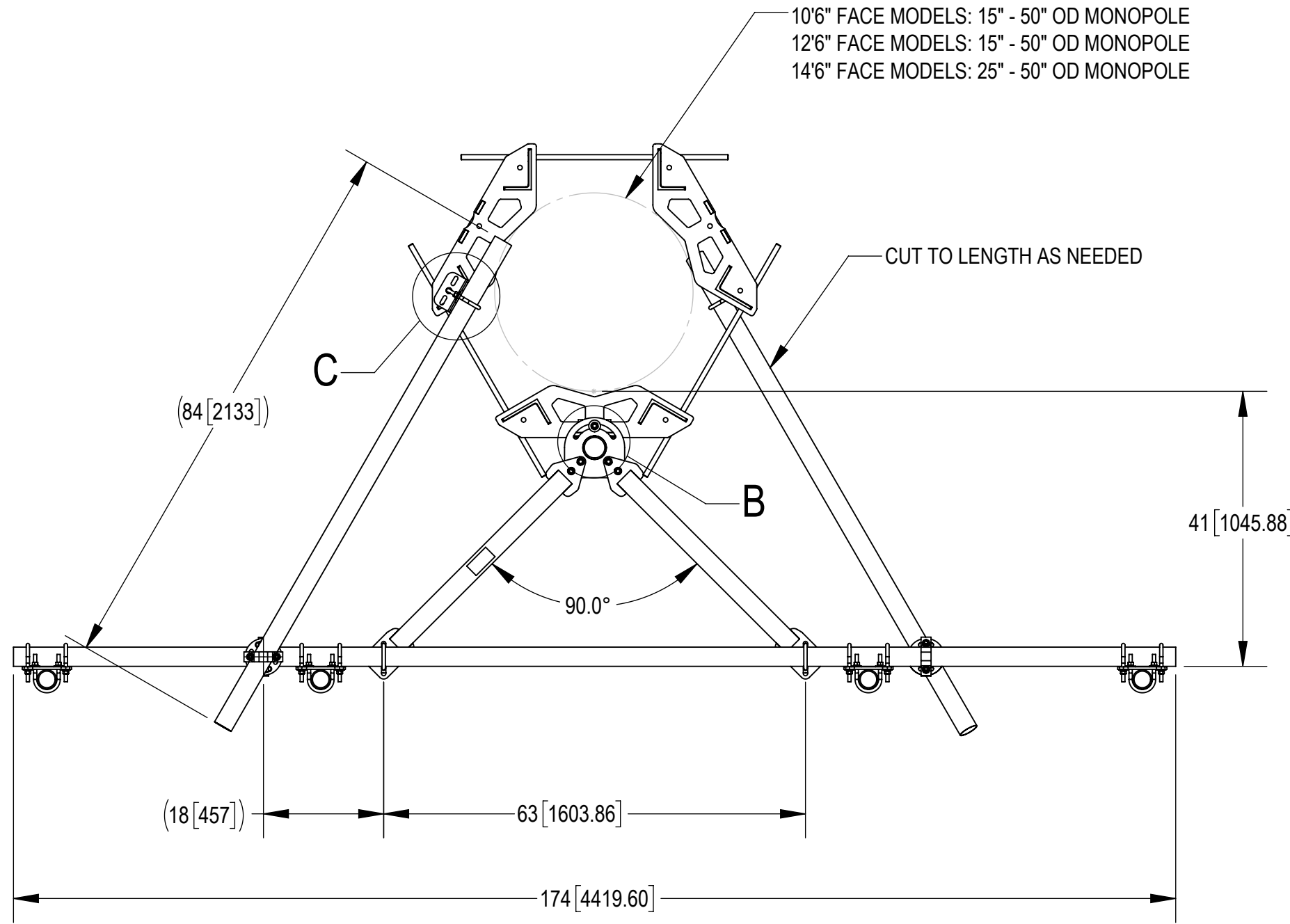
1

ALLOWABLE TIEBACK ANGLE

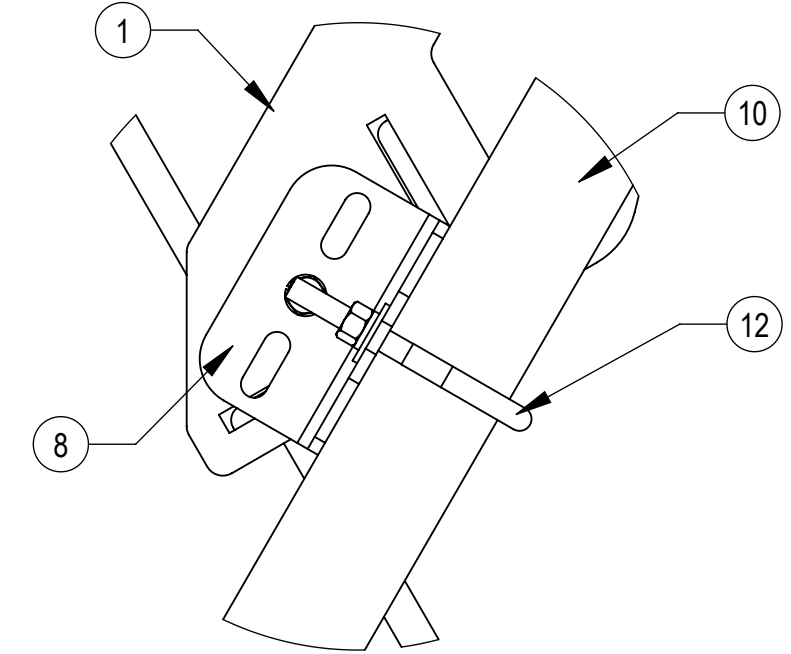
±15 DEGREES VERTICAL
±25 DEGREES HORIZONTAL



10'6" FACE MODELS: 15" - 50" OD MONOPOLE
 12'6" FACE MODELS: 15" - 50" OD MONOPOLE
 14'6" FACE MODELS: 25" - 50" OD MONOPOLE

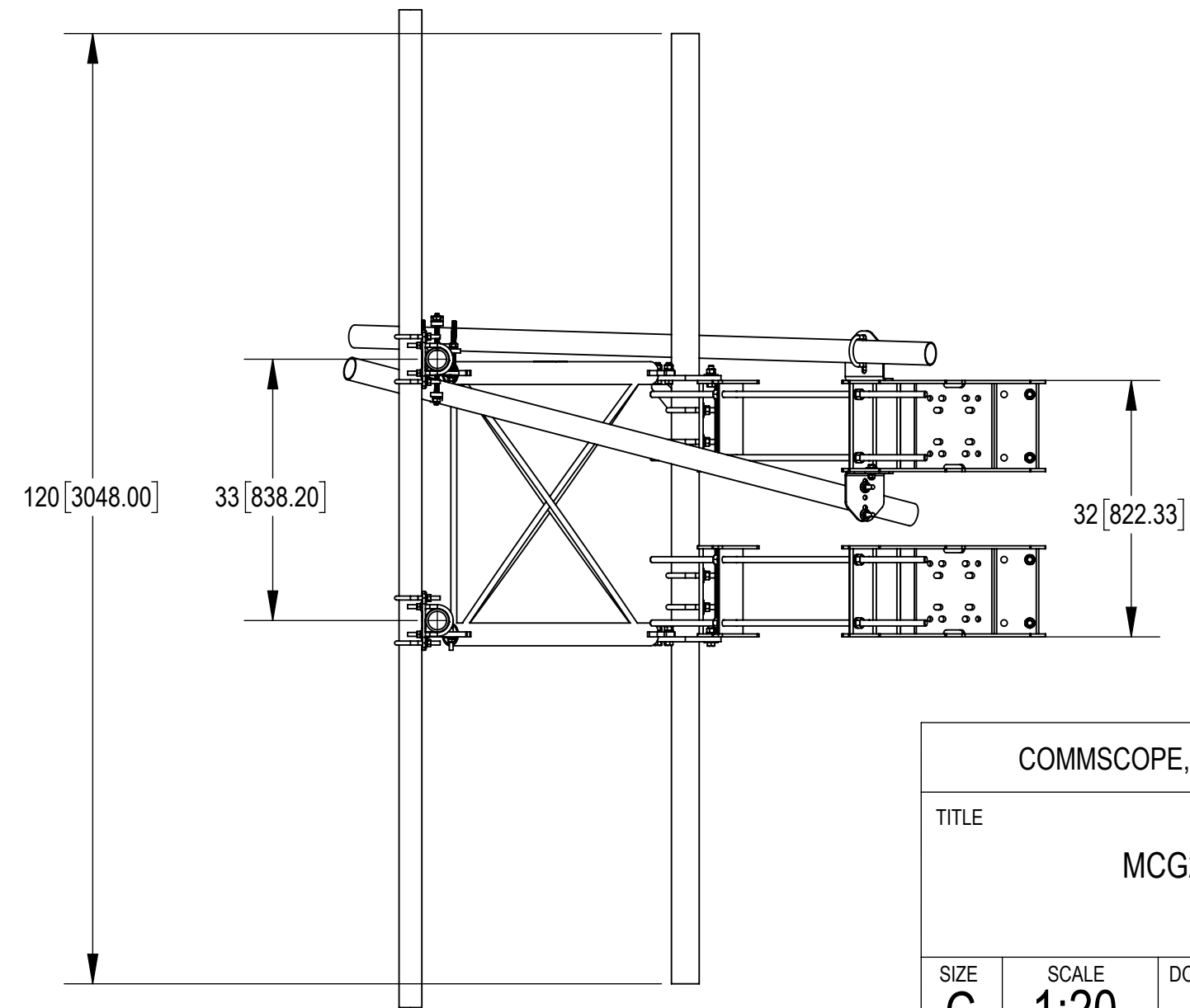
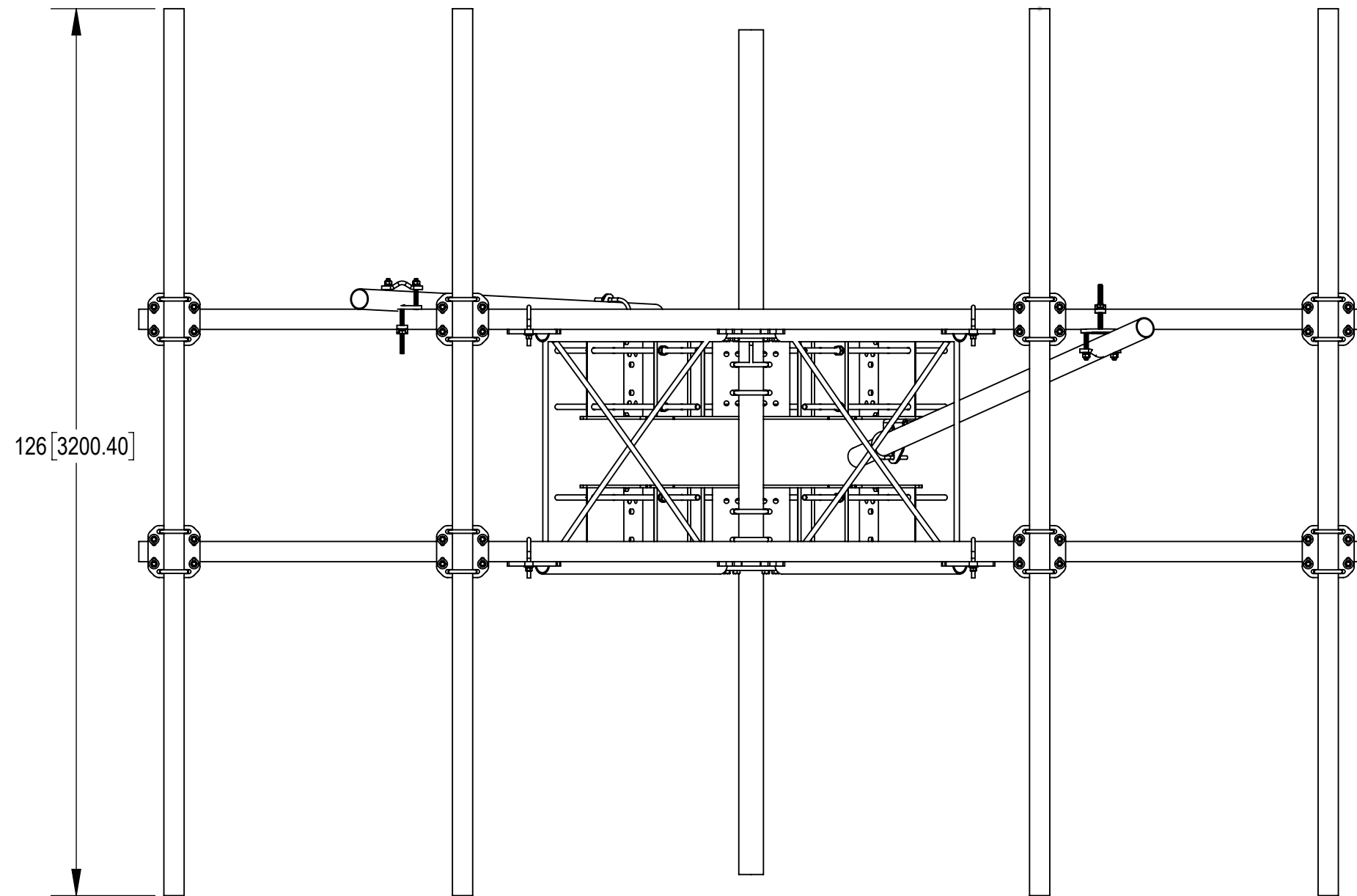


DETAIL B
SCALE 1 : 4



DETAIL C
SCALE 1 : 4

MCG23RHDX-14M12126 SHOWN FOR REFERENCE
 (NOT ALL CONFIGURATIONS INCLUDE ALL ITEMS SEE NOTES IN TABLE ON SHEET 3)



TOP

BOTTOM

COMMSCOPE, INC. OF NORTH CAROLINA				
TITLE				
MCG23RHDX SERIES				
SIZE	SCALE	DOCUMENT NO.		
C	1:20	MCG23RHDX		
DRAWING				SHEET
VERSION	STATUS	REVISION	4 OF 9	
04	RE	D		

4

3

2

1

4

3

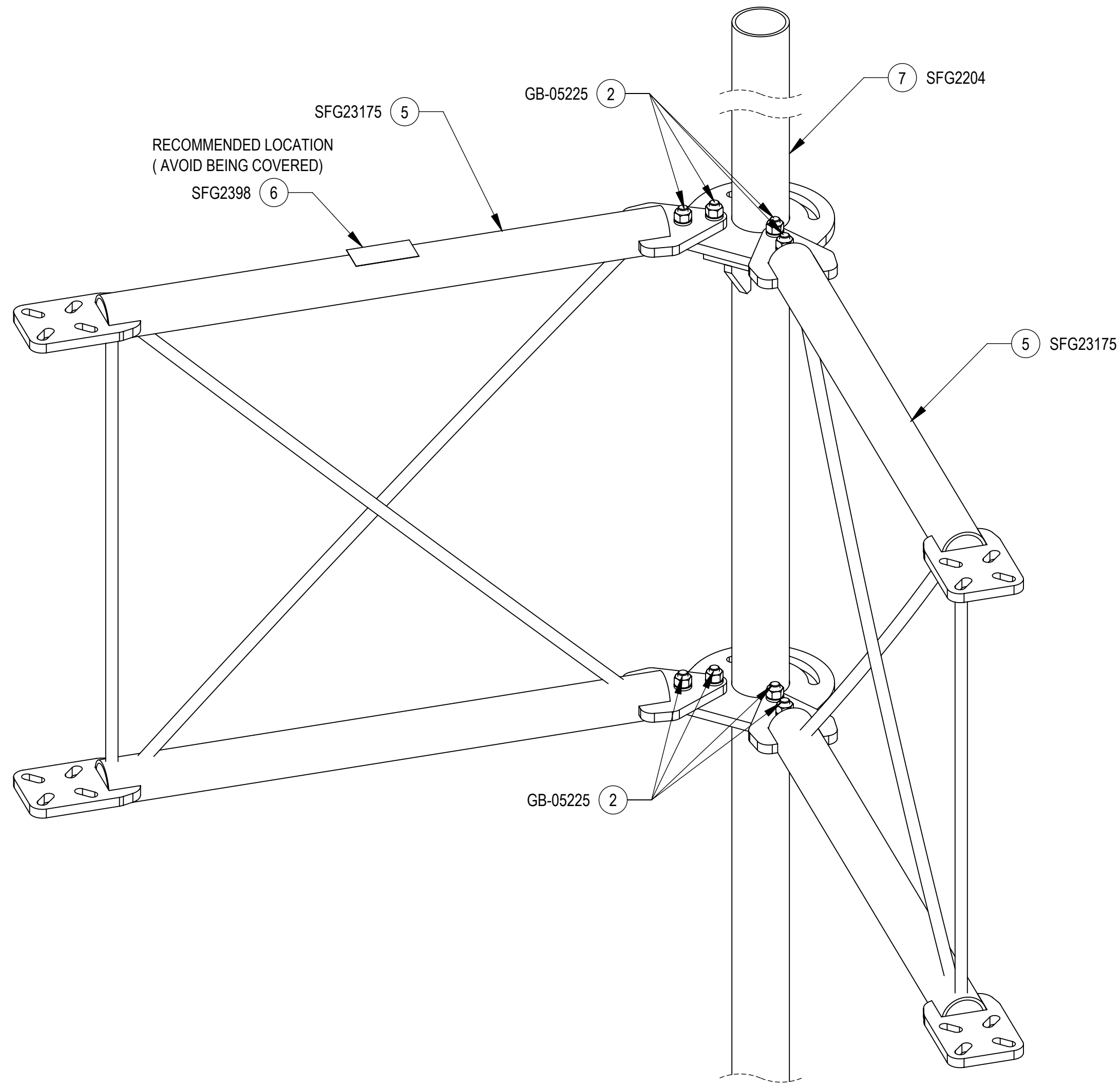
2

1

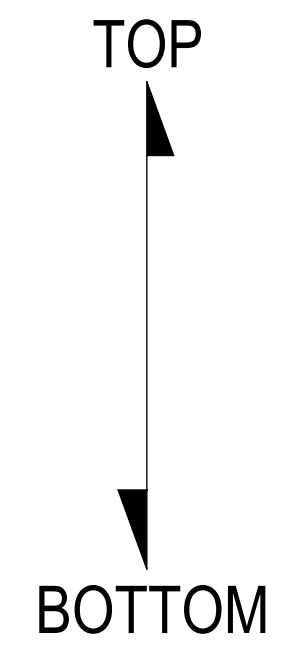
INSTALLATION SEQUENCE - REFERENCE ONLY

STEP 1: ATTACH STANDOFF ARMS (SFG23175) TO BACK VERTICAL ARM MOUNT (SFG2204) USING (GB-05225) BOLT KITS

ATTACH LABEL (SFG2398) ON TOP OF STANDOFF ARMS(SFG23175) . (WIPE GALVANIZED SURFACE WITH ALCOHOL CLEANER BEFORE APPLYING LABEL.)



ISO VIEW



COMMSCOPE, INC. OF NORTH CAROLINA				
TITLE MCG23RHDX SERIES				
SIZE C	SCALE 1:4	DOCUMENT NO. MCG23RHDX		
		DRAWING		SHEET 5 OF 9
		VERSION 04	STATUS RE	

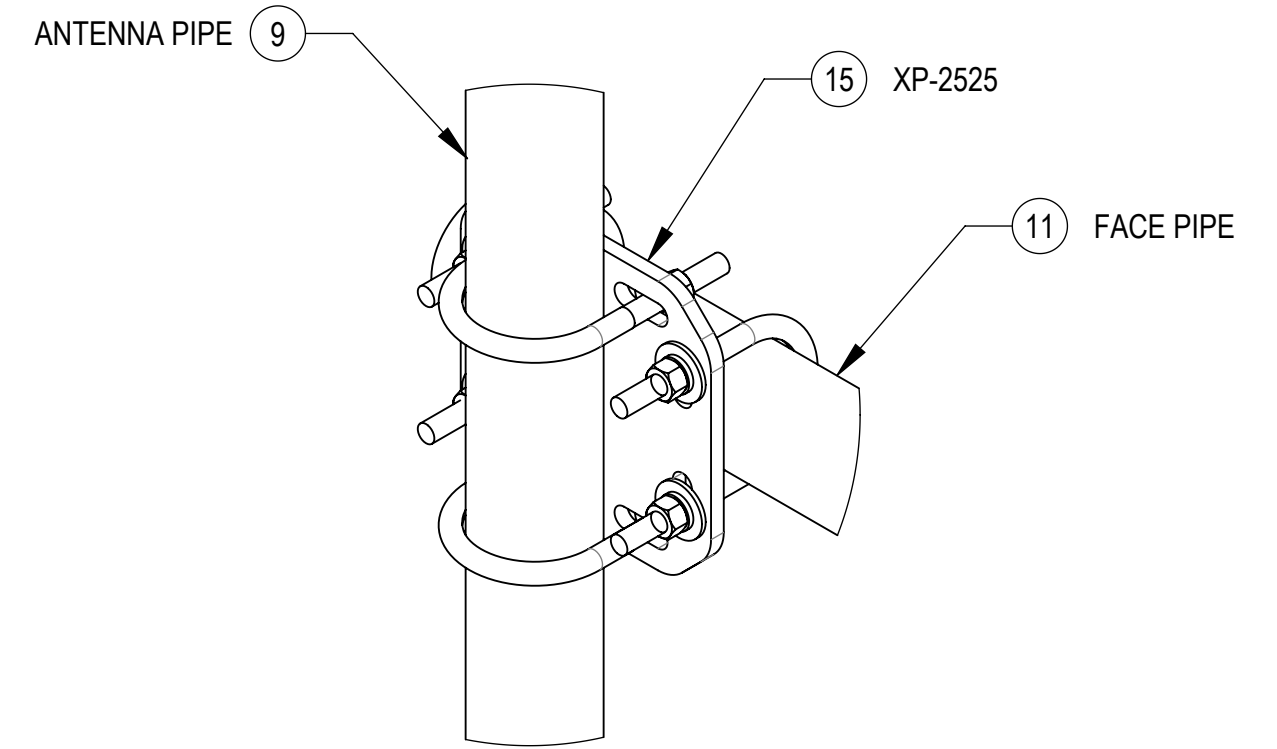
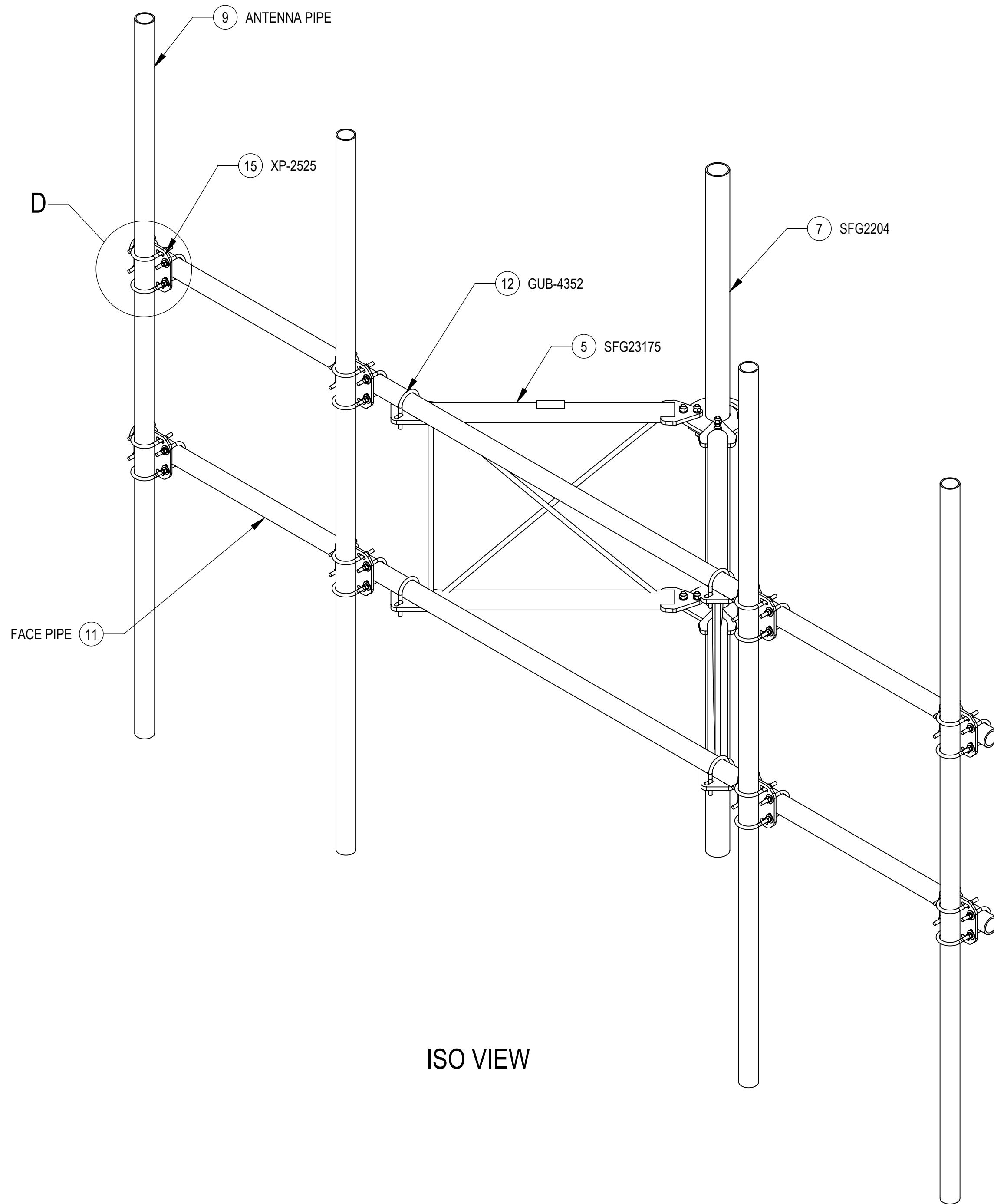
4

3

2

1

STEP 2: ATTACH FACE PIPES TO STANDOFF ARMS (SFG23175) USING U-BOLTS (GUB-4352)
AND THEN ATTACH ANTENNA PIPES TO FACE PIPES USING CROSSOVER PLATE KITS (XP-2525)



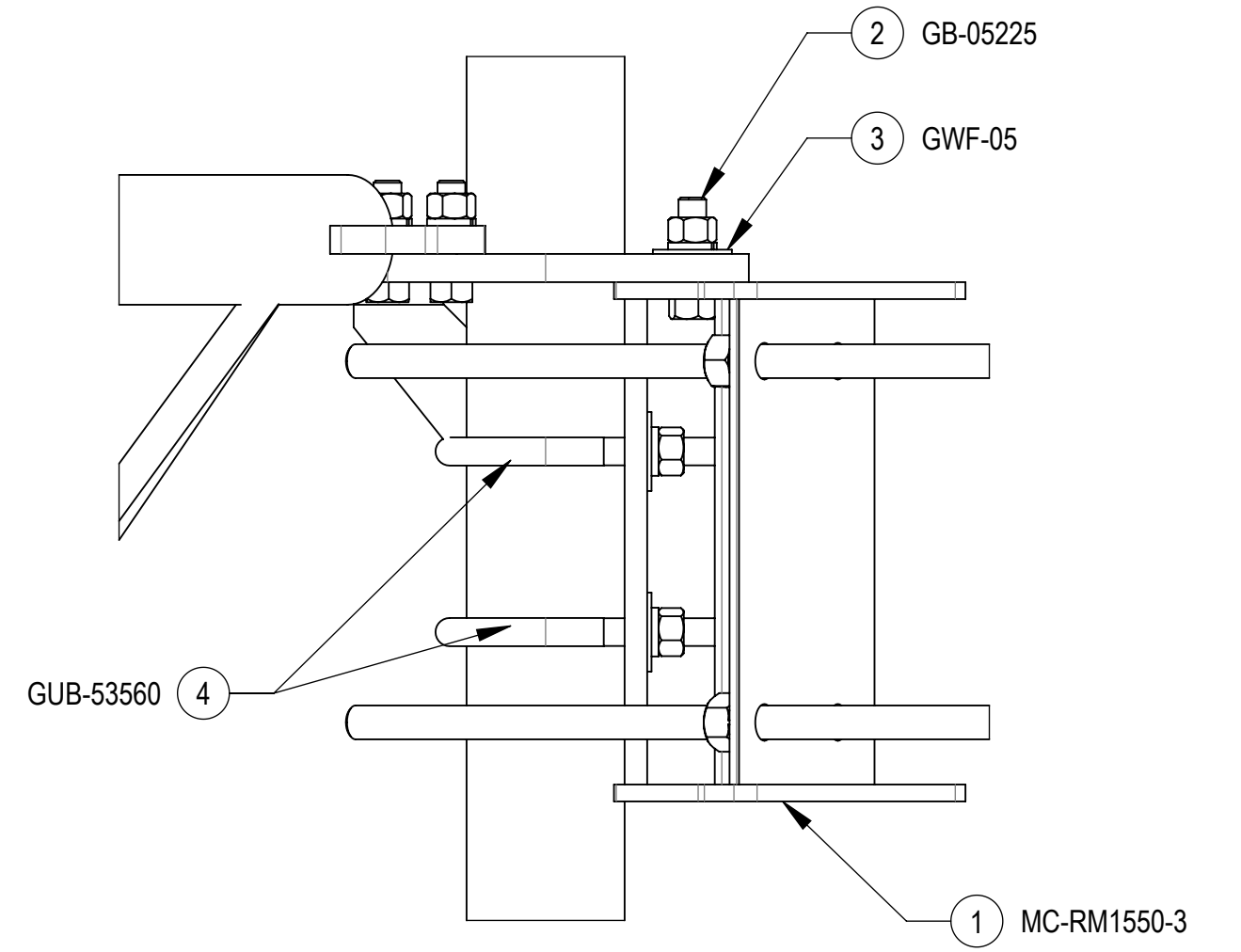
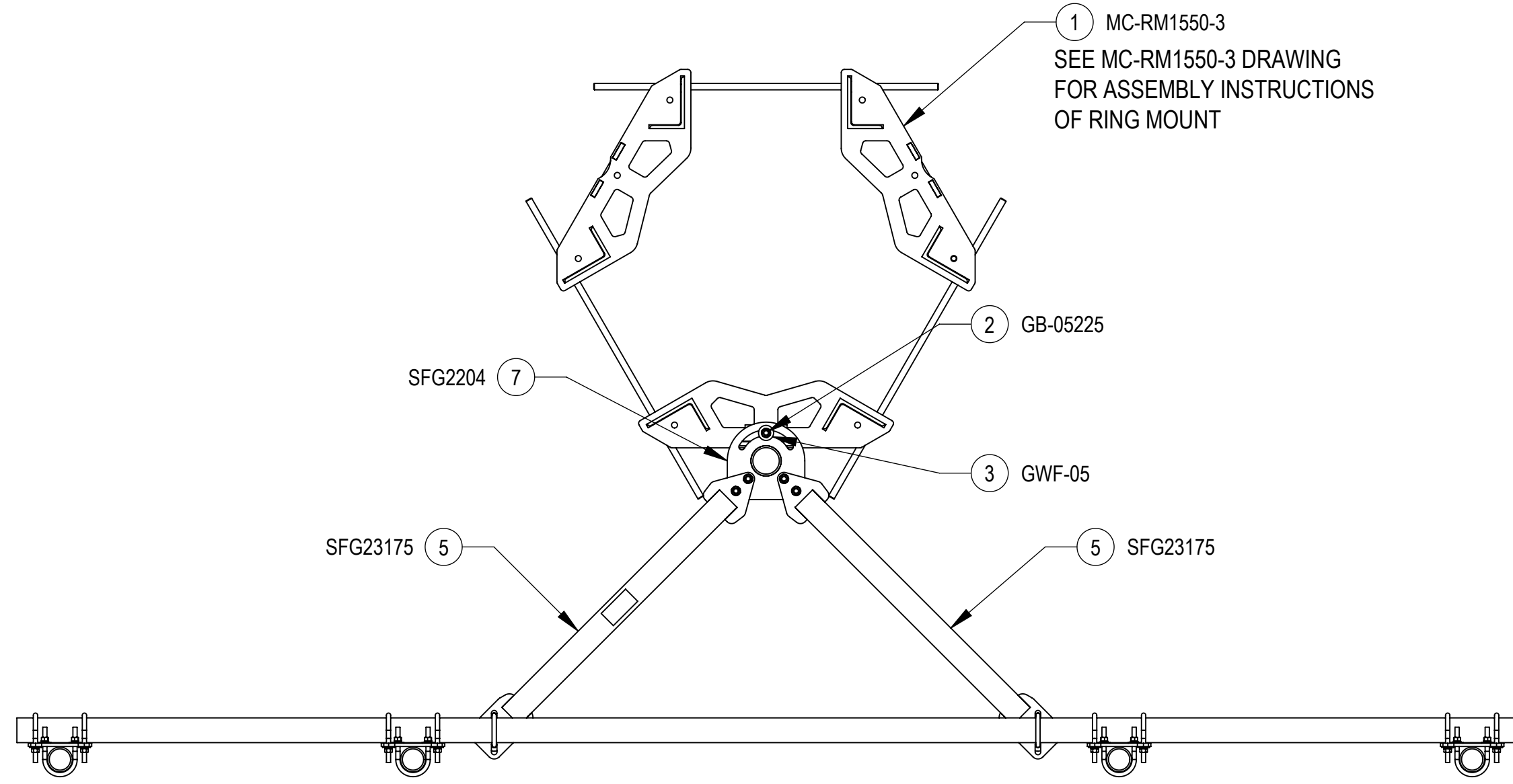
DETAIL D
SCALE 1 : 4

TOP
↑
↓
BOTTOM

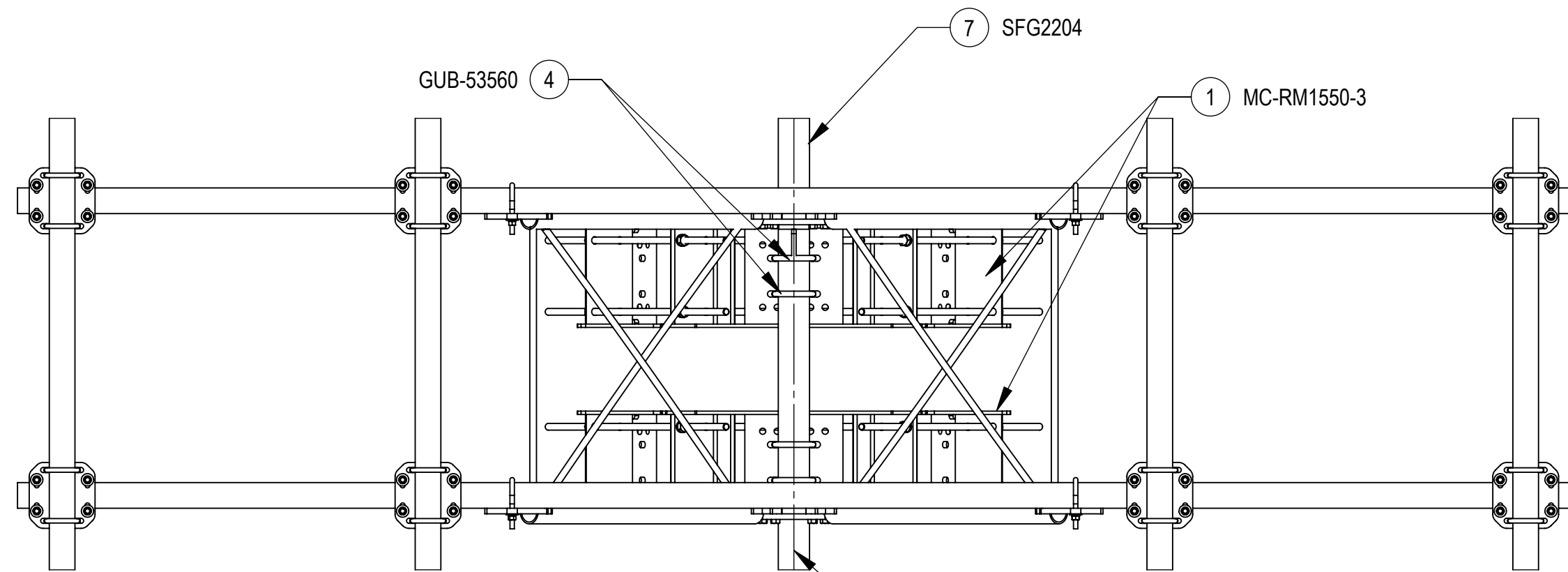
ISO VIEW

COMMSCOPE, INC. OF NORTH CAROLINA				
TITLE MCG23RHDX SERIES				
SIZE C	SCALE 1:12	DOCUMENT NO. MCG23RHDX		
		DRAWING		SHEET
		VERSION	STATUS	REVISION
		04	RE	D
				6 OF 9

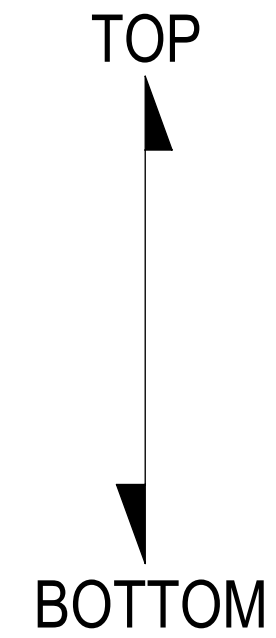
STEP 3: ATTACH BACK VERTICAL ARM MOUNT (SFG2204) TO RING MOUNTS (MC-RM1550-3) USING BOLT KITS (GB-05225), FLAT WASHERS (GWF-05) AND U-BOLT (GUB-53560)



SIDE CROP VIEW



RING MOUNT SECTOR CENTERLINES
MUST VERTICALLY ALIGN TO ALLOW
SECTOR FRAME SPINE PROPER MOUNTING



COMMSCOPE, INC. OF NORTH CAROLINA				
TITLE MCG23RHD X SERIES				
SIZE C	SCALE 1:8	DOCUMENT NO. MCG23RHD X		
		DRAWING		SHEET
		VERSION 04	STATUS RE	REVISION D
				7 OF 9

4

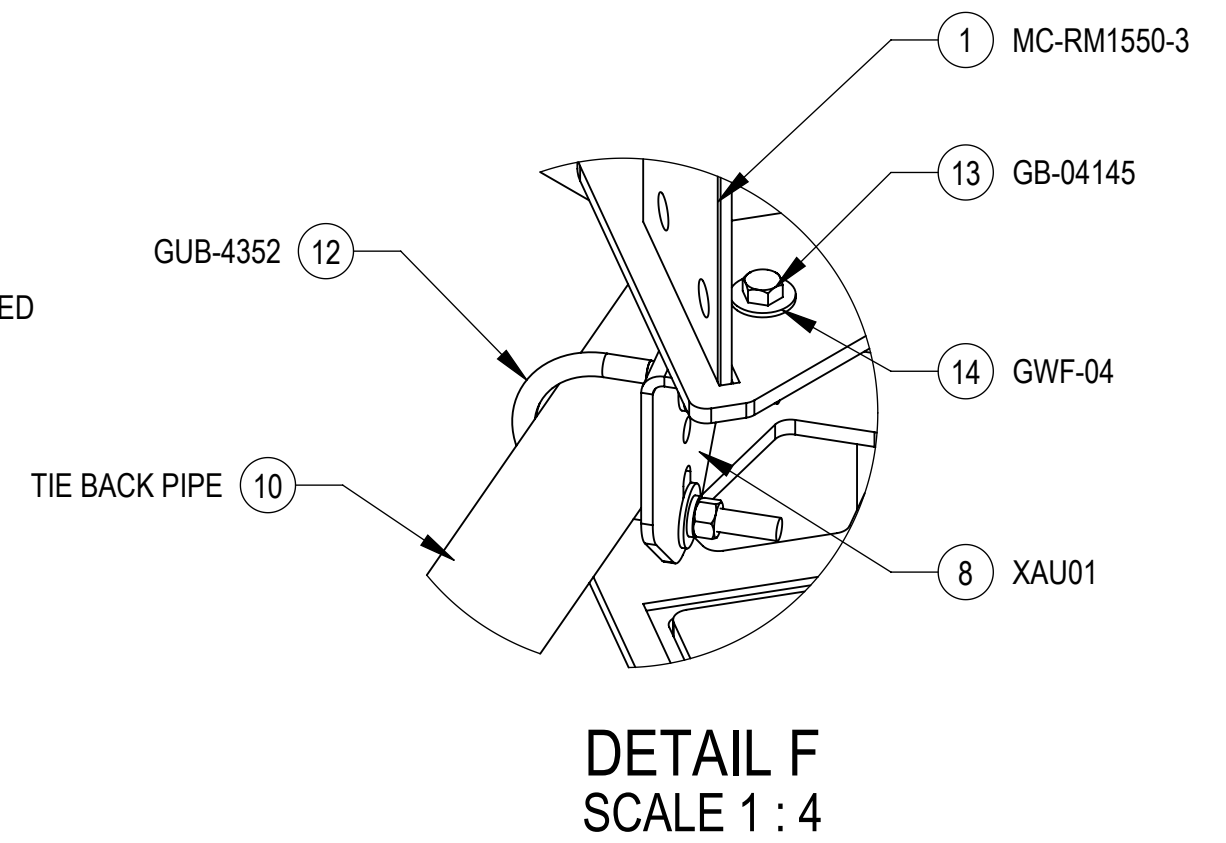
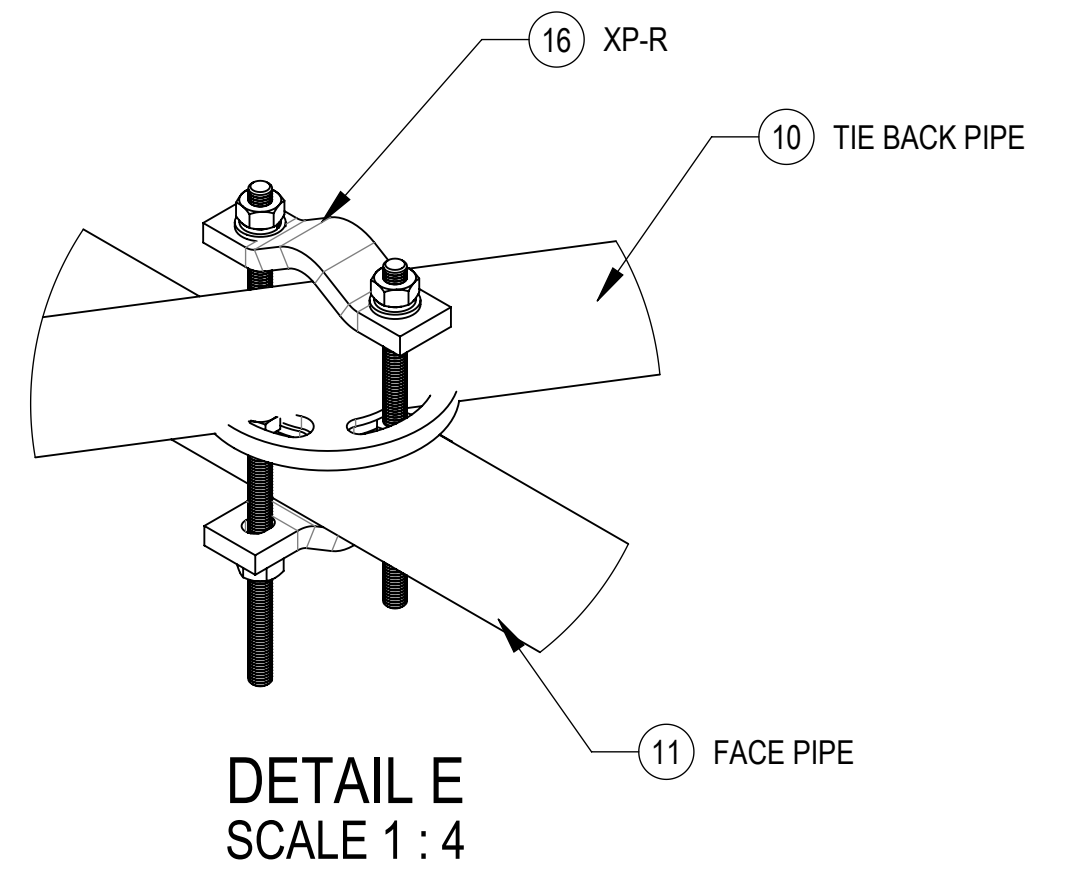
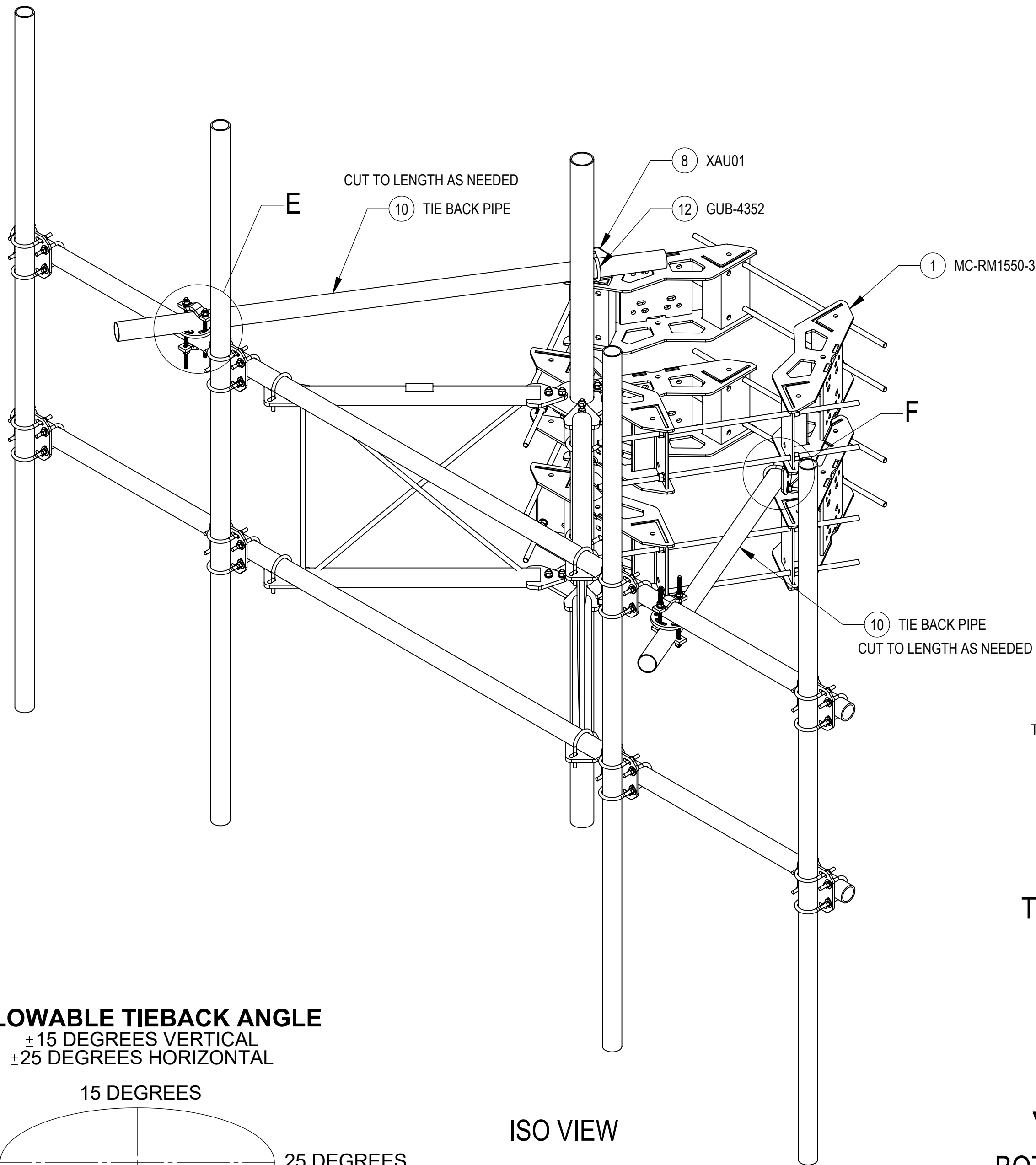
3

2

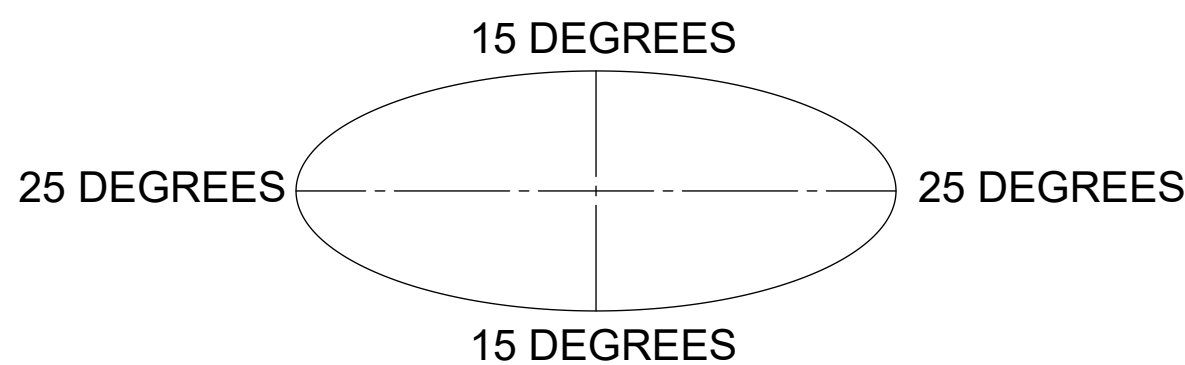
1

STEP 4: ATTACH TIE BACK PIPES TO FACE PIPES USING XP-R

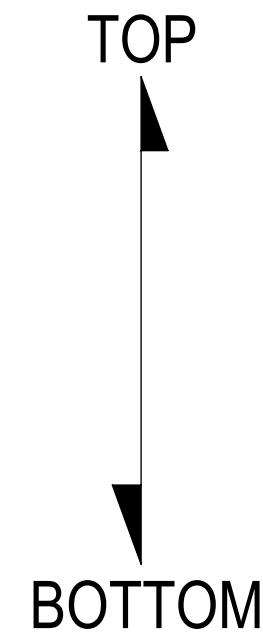
STEP 5: ATTACH TIE BACK PIPES TO RING MOUNTS (MC-RM1550-3) USING CROSSOVER ANGLES (XAU01), BOLT KITS (GB-04145), FLAT WASHER (GWF-04) AND U-BOLT (GUB-4352)



ALLOWABLE TIEBACK ANGLE
 ±15 DEGREES VERTICAL
 ±25 DEGREES HORIZONTAL



ISO VIEW



COMMSCOPE, INC. OF NORTH CAROLINA				
TITLE MCG23RHDX SERIES				
SIZE C	SCALE 1:16	DOCUMENT NO. MCG23RHDX		
DRAWING		REVISION		SHEET
VERSION 04	STATUS RE	REVISION D	8 OF 9	

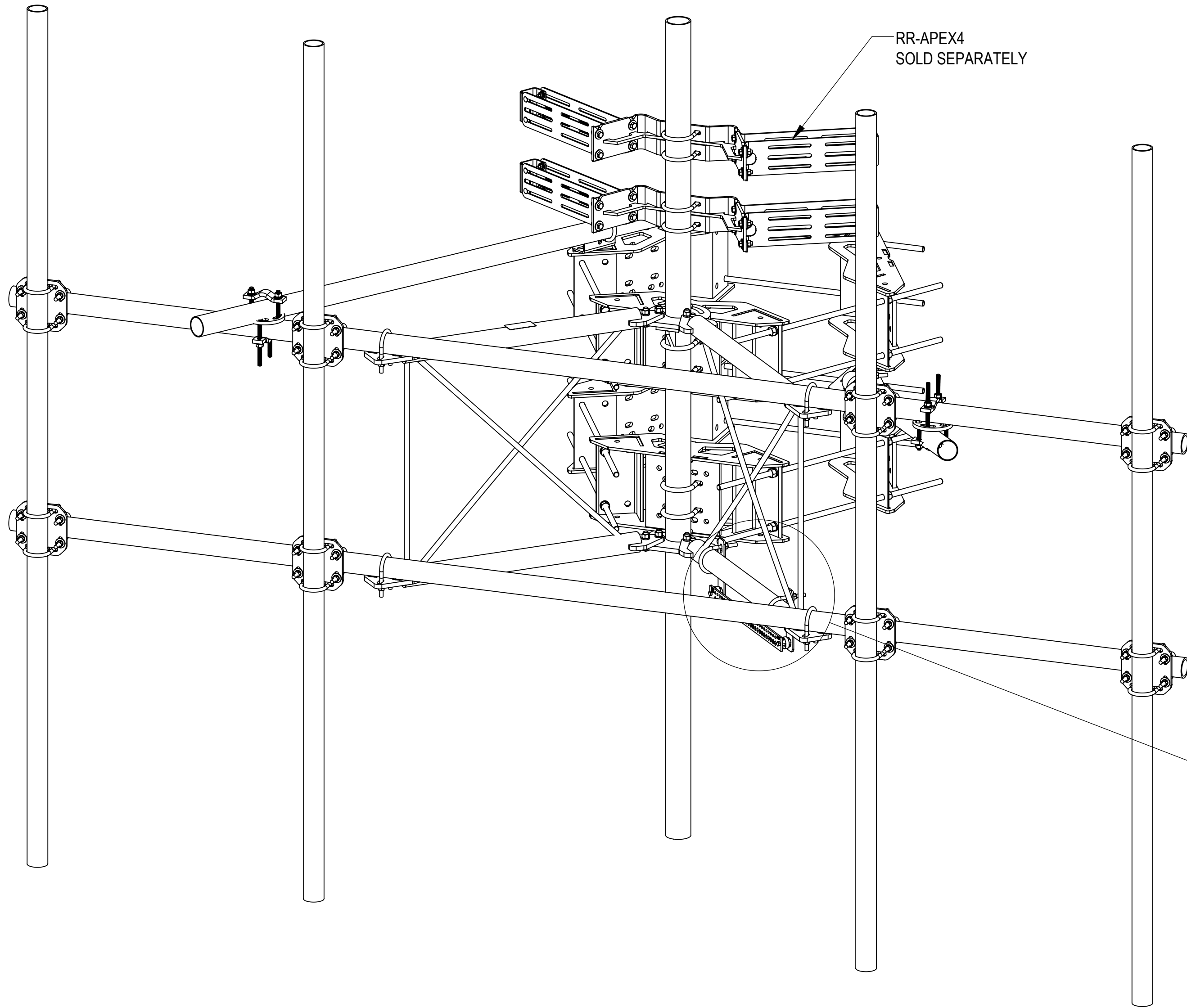
4

3

2

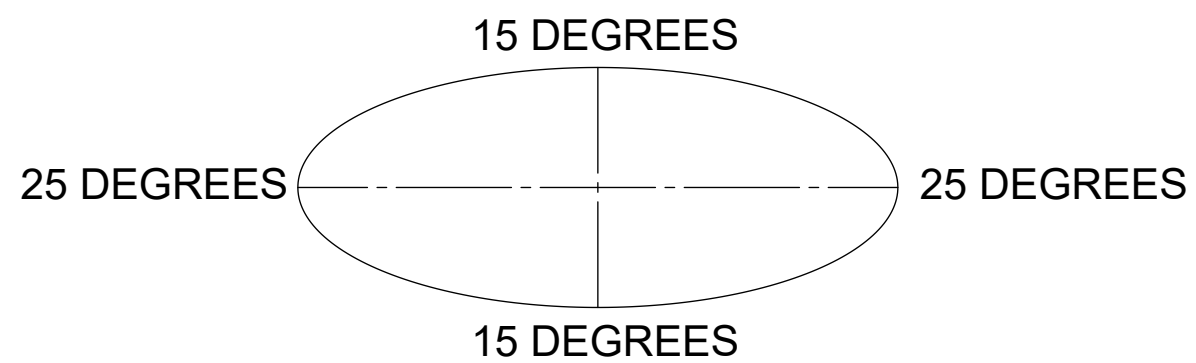
1

OPTIONAL ACCESSORIES:



ALLOWABLE TIEBACK ANGLE

±15 DEGREES VERTICAL
±25 DEGREES HORIZONTAL



DETAIL G
SCALE 1 : 8

GBSF278
SOLD SEPARATELY

COMMSCOPE, INC. OF NORTH CAROLINA

TITLE		MCG23RHDX SERIES		
SIZE	SCALE	DOCUMENT NO.		
C	1:16	MCG23RHDX		
DRAWING		VERSION		SHEET
		04	RE	9 OF 9
REVISION		STATUS		REVISION
		RE		