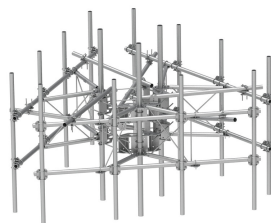


# MCG23RHDX-12M1296



G23RHDX Monopole Sector Frame with spine extension for RRU Mounting, 12.5 ft x 2.88 in OD face pipes, includes twelve 2.88 OD x 96 in antenna pipes

- Extended spine for MCG23 RHDX mounts that decrease PIM from radio relocation
- Increased versatility and stability
- Updated frame provides higher loading
- More RRU mounting available, reducing need for additional mounts
- Better load management
- Less structure stress
- Can be used in combination with APEX RRU mounts

## Product Classification

Product Type	High capacity monopole sector frame
Product Brand	PIM-guard
Product Series	G2

## General Specifications

Mounting	Monopole, 381–1270 mm (15–50 in) OD
Pipe, quantity	12
Sectors, quantity	3

## Dimensions

Height	2,438.4 mm   96 in
Face Width	3.81 m   12.5 ft
Width	3,810 mm   150 in
Pipe Length	2,438.4 mm   96 in
Face Support Pipe Diameter	73.025 mm   2.875 in
Mounting Diameter, maximum	1270 mm   50 in
Mounting Diameter, minimum	381 mm   15 in
Pipe Outer Diameter	73.025 mm   2.875 in
Stand-off Distance	1,066.8 mm   42 in

## Material Specifications

# MCG23RHDX-12M1296

---

**Material Type** Hot dip galvanized steel

## Mechanical Specifications

**Wind Rating** For Specifications, please contact your local ANDREW representative

**Wind Rating Test Method** TIA/EIA-222

## Packaging and Weights

**Included** Mounting hardware | Pipe mounts | Plain end pipes (12) | Ring mounts (2) | Sector frames (3) | Stiff arm

**Packaging quantity** 1

## \* Footnotes

**Wind Rating** BWS—Base Wind Speed; FBC—Florida Building Code