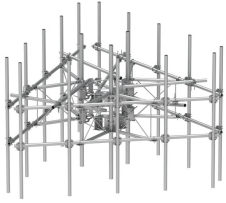


# MCG23RHDX-14M15120

---



G23RHDX Monopole Sector Frame with spine extension for RRU Mounting, 14.5 ft x 2.88 in OD face pipes, includes fifteen 2.88 OD x 120 in antenna pipes

- Extended spine for MCG23 RHDX mounts that decrease PIM from radio relocation
- Increased versatility and stability
- Updated frame provides higher loading
- More RRU mounting available, reducing need for additional mounts
- Better load management
- Less structure stress
- Can be used in combination with APEX RRU mounts

## Product Classification

|                       |                                     |
|-----------------------|-------------------------------------|
| <b>Product Type</b>   | High capacity monopole sector frame |
| <b>Product Brand</b>  | PIM-guard                           |
| <b>Product Series</b> | G2                                  |

## General Specifications

|                          |                                     |
|--------------------------|-------------------------------------|
| <b>Mounting</b>          | Monopole, 381–1270 mm (15–50 in) OD |
| <b>Pipe, quantity</b>    | 15                                  |
| <b>Sectors, quantity</b> | 3                                   |

## Dimensions

|                                   |                      |
|-----------------------------------|----------------------|
| <b>Height</b>                     | 3,048 mm   120 in    |
| <b>Face Width</b>                 | 4.42 m   14.5 ft     |
| <b>Width</b>                      | 4,419.6 mm   174 in  |
| <b>Pipe Length</b>                | 3,048 mm   120 in    |
| <b>Face Support Pipe Diameter</b> | 73.025 mm   2.875 in |
| <b>Mounting Diameter, maximum</b> | 1270 mm   50 in      |
| <b>Mounting Diameter, minimum</b> | 381 mm   15 in       |
| <b>Pipe Outer Diameter</b>        | 73.025 mm   2.875 in |

# MCG23RHDX-14M15120

---

**Stand-off Distance** 1,066.8 mm | 42 in

## Material Specifications

**Material Type** Hot dip galvanized steel

## Mechanical Specifications

**Wind Rating** For Specifications, please contact [steelproducts@commscope.com](mailto:steelproducts@commscope.com) or call 800-255-1479

**Wind Rating Test Method** TIA/EIA-222

## Packaging and Weights

**Included** Mounting hardware | Pipe mounts | Plain end pipes | Ring mounts (2) | Sector frames (3) | Stiff arm

**Packaging quantity** 1

## \* Footnotes

**Wind Rating** BWS—Base Wind Speed; FBC—Florida Building Code