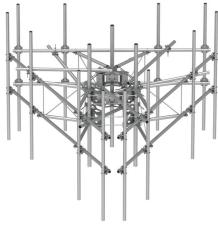


MCG23RHDX-14M1596



G23RHDX Monopole Sector Frame with spine extension for RRU Mounting, 14.5 ft x 2.88 in OD face pipes, includes fifteen 2.88 OD x 96 in antenna pipes

- Extended spine for MCG23 RHDX mounts that decrease PIM from radio relocation
- Increased versatility and stability
- Updated frame provides higher loading
- More RRU mounting available, reducing need for additional mounts
- Better load management
- Less structure stress
- Can be used in combination with APEX RRU mounts

Product Classification

Product Type	High capacity monopole sector frame
Product Brand	PIM-guard
Product Series	G2

General Specifications

Mounting	Monopole, 381–1270 mm (15–50 in) OD
Pipe, quantity	15
Sectors, quantity	3

Dimensions

Height	2,438.4 mm 96 in
Face Width	4.42 m 14.5 ft
Width	4,419.6 mm 174 in
Pipe Length	2,438.4 mm 96 in
Face Support Pipe Diameter	73.025 mm 2.875 in
Mounting Diameter 2, maximum	in
Mounting Diameter, maximum	1270 mm 50 in
Mounting Diameter, minimum	381 mm 15 in
Pipe Outer Diameter	73.025 mm 2.875 in
Stand-off Distance	1,066.8 mm 42 in

MCG23RHDX-14M1596

Material Specifications

Material Type Hot dip galvanized steel

Mechanical Specifications

Wind Rating For Specifications, please contact steelproducts@commscope.com or call 800-255-1479

Wind Rating Test Method TIA/EIA-222

Packaging and Weights

Included Mounting hardware | Pipe mounts | Plain end pipes | Ring mounts (2) | Sector frames (3) | Stiff arm

Packaging quantity 1

* Footnotes

Wind Rating BWS—Base Wind Speed; FBC—Florida Building Code