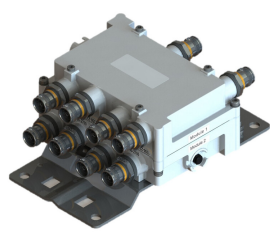


# CDX1726Q-DL-43 | E14F06P72



Quad Diplexer 1350-2200/2300-2700 MHz, DC bypass on 1350-2200 ports, 4.3-10 connectors

## Product Classification

**Product Type** Diplexer

## General Specifications

**Color** Gray

**Common Port Label** COMM

**Modularity** 4-Quad

**Mounting** Pole | Wall

**Mounting Pipe Hardware** Band clamps (2)

**RF Connector Interface** 4.3-10 Female

**RF Connector Interface Body Style** Medium neck

## Dimensions

**Height** 114 mm | 4.488 in

**Width** 167 mm | 6.575 in

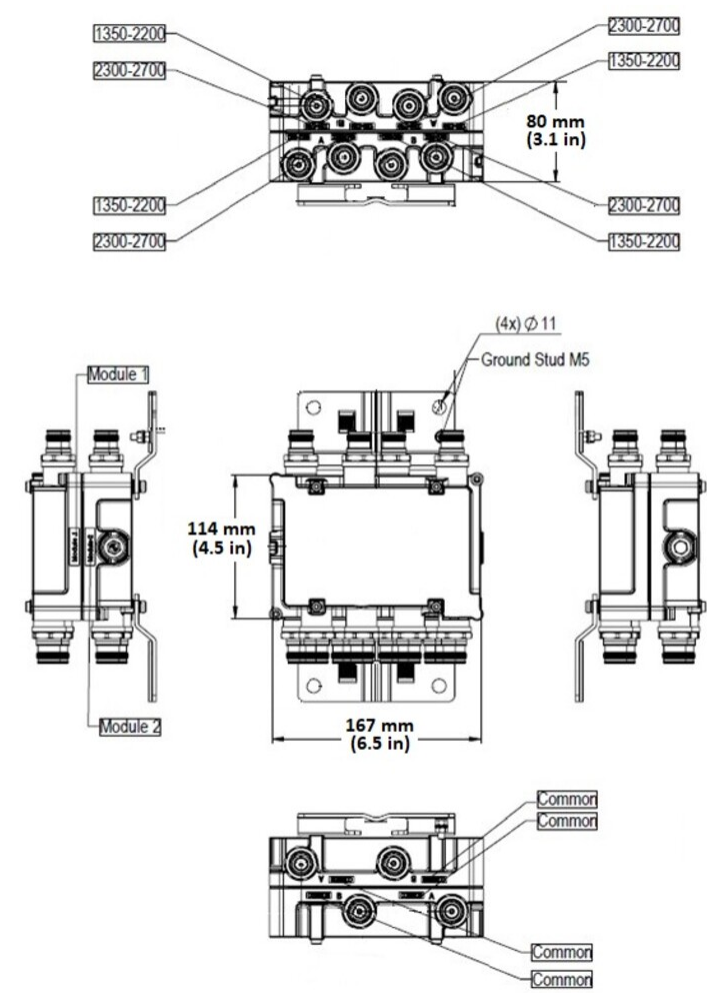
**Depth** 80 mm | 3.15 in

**Ground Screw Diameter** 5 mm | 0.197 in

**Mounting Pipe Diameter Range** 42.6–122 mm

## Outline Drawing

# CDX1726Q-DL-43 | E14F06P72



## Electrical Specifications

Impedance	50 ohm
License Band, Band Pass	AWS 1700   DCS 1800   IMT 2100   IMT 2600   PCS 1900   TDD 1900   TDD 2000   TDD 2300   TDD 2600   WCS 2300

## Electrical Specifications, dc Power/Alarm

dc/AISG Pass-through, combiner	Branch 1
dc/AISG Pass-through, demultiplexer	Branch 1
Lightning Surge Current	5 kA
Lightning Surge Current Waveform	8/20 waveform

## Electrical Specifications

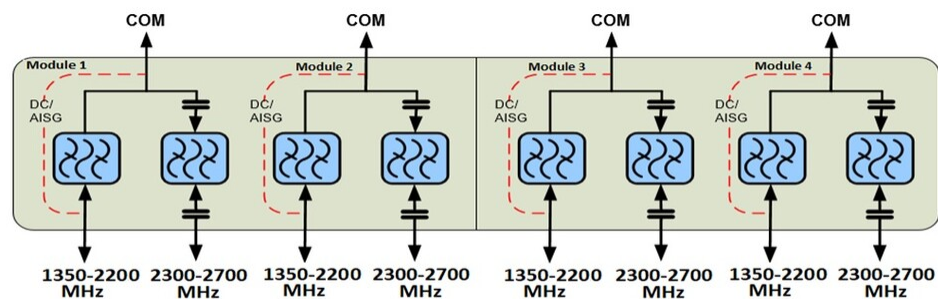
# CDX1726Q-DL-43 | E14F06P72

Sub-module	1   2   3   4	1   2   3   4
Branch	4	4
Port Designation	1350-2200 MHz	2300-2700 MHz
License Band	AWS 1700, Band Pass DCS 1800, Band Pass IMT 2100, Band Pass PCS 1900, Band Pass TDD 1900, Band Pass TDD 2000, Band Pass	IMT 2600, Band Pass WCS 2300, Band Pass TDD 2300, Band Pass TDD 2600, Band Pass

## Electrical Specifications, Band Pass

Frequency Range, MHz	1350–2200	2300–2700
Insertion Loss, maximum, dB	0.35	0.3
Insertion Loss, typical, dB	0.15	0.15
Total Group Delay, maximum, ns	10	15
Return Loss, minimum, dB	18	18
Isolation, minimum, dB	50	50
Input Power, RMS, maximum, W	150	150
Input Power, PEP, maximum, W	2000	2000
3rd Order PIM, typical, dBc	-161	-161
3rd Order PIM Test Method	2 x 20 W CW tones	2 x 20 W CW tones

## Block Diagram



## Environmental Specifications

Operating Temperature	-40 °C to +60 °C (-40 °F to +140 °F)
Relative Humidity	Up to 100%
Corrosion Test Method	IEC 60068-2-11, 30 days
Ingress Protection Test Method	IEC 60529:2001, IP67

# CDX1726Q-DL-43 | E14F06P72

---

## Packaging and Weights

Included	Mounting hardware
Volume	1.55 L
Weight, with mounting hardware	3.6 kg   7.937 lb