

4

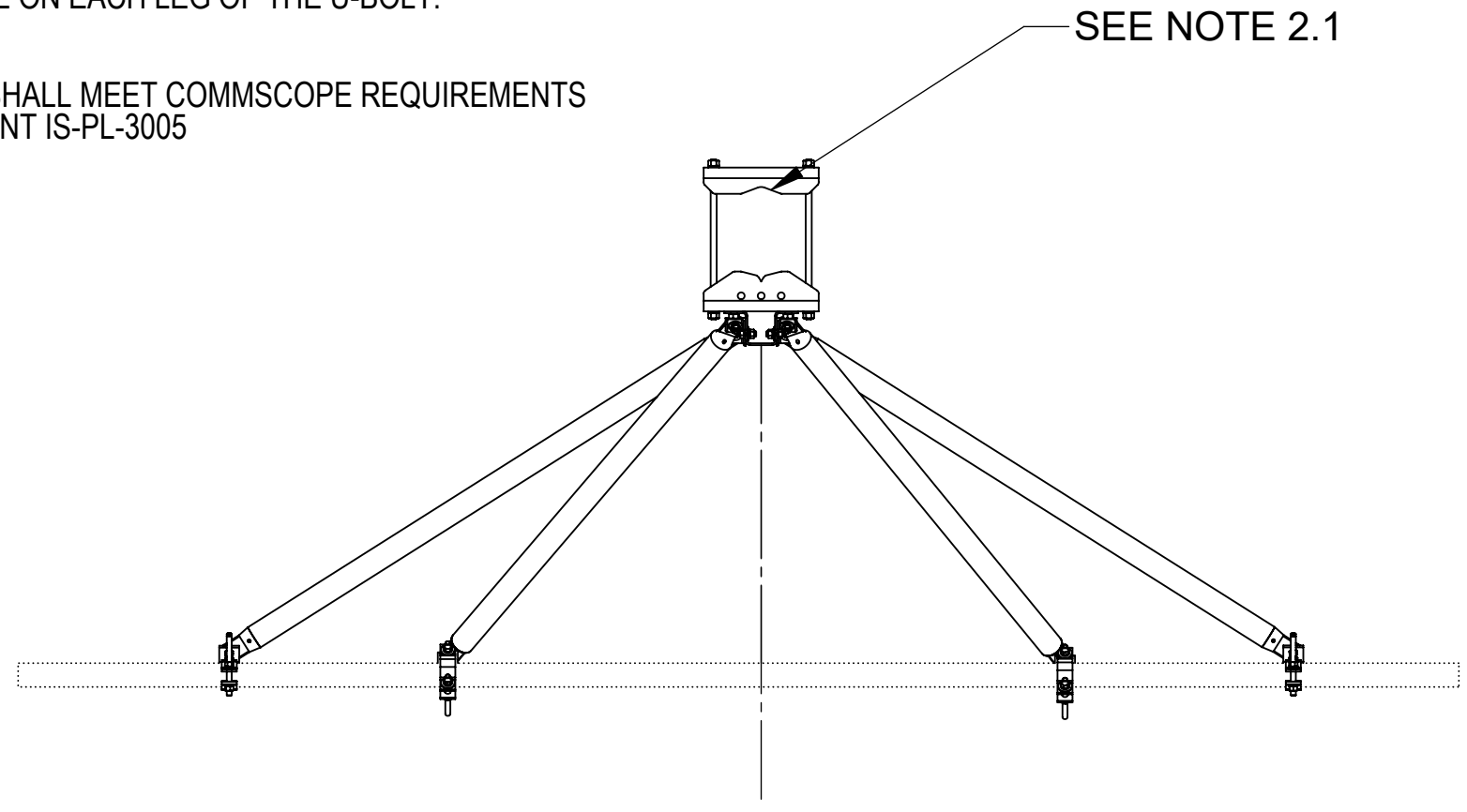
3

2

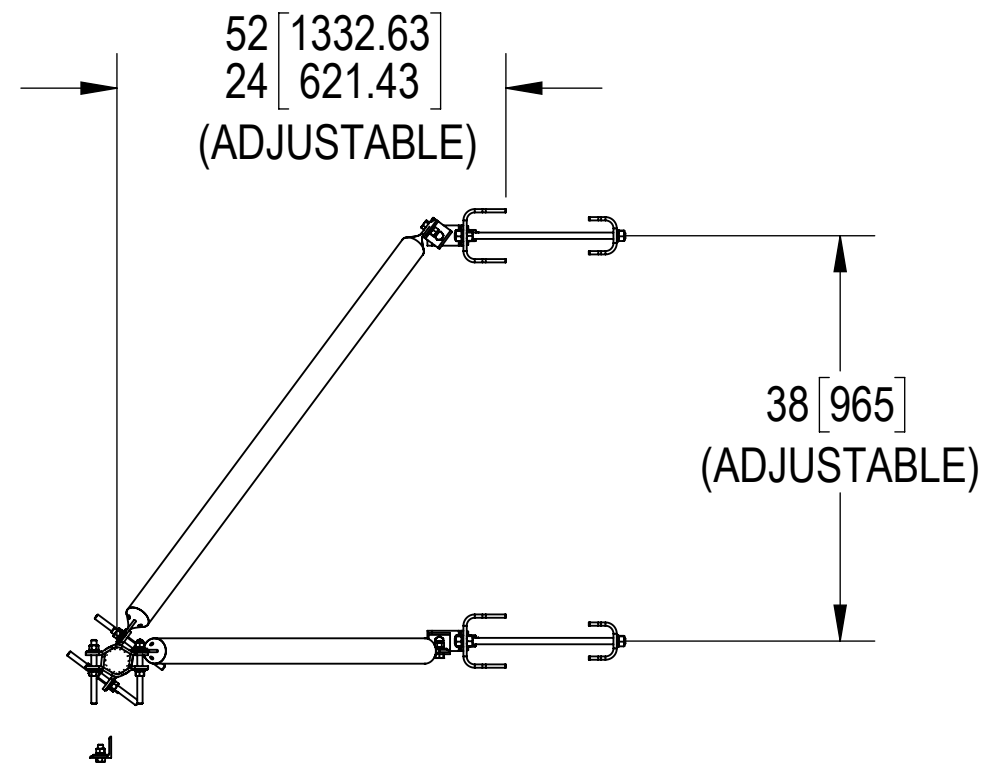
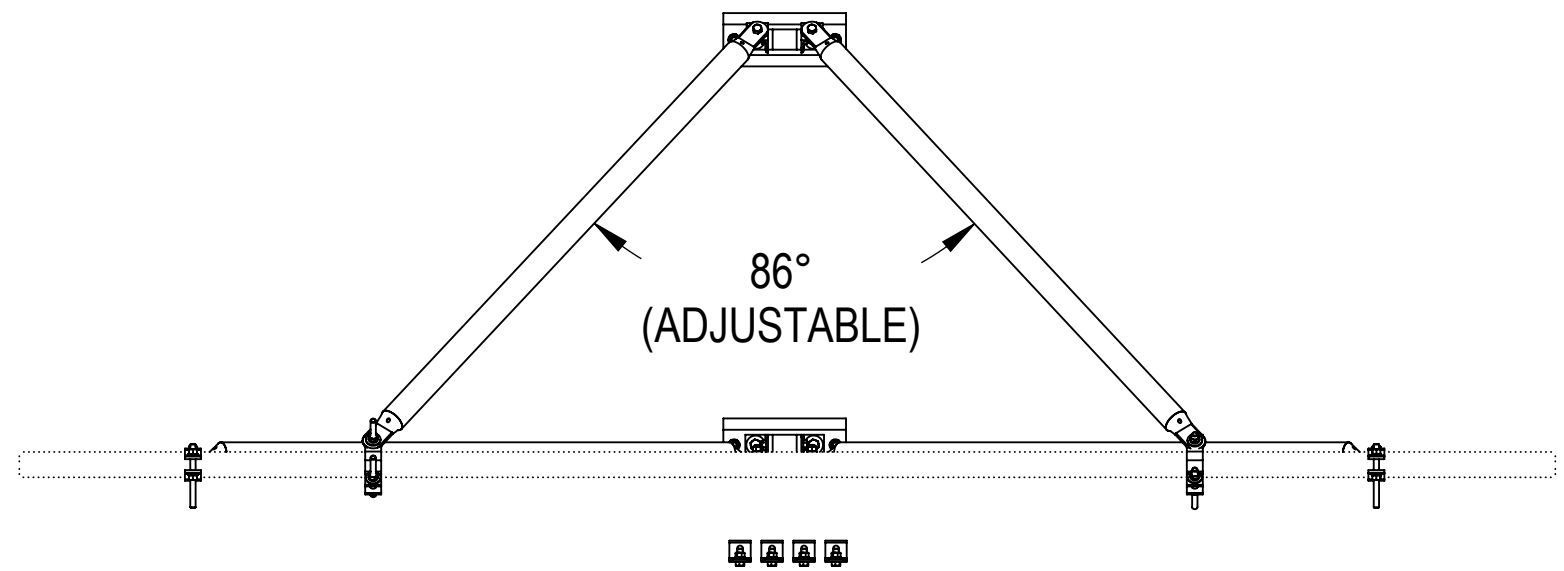
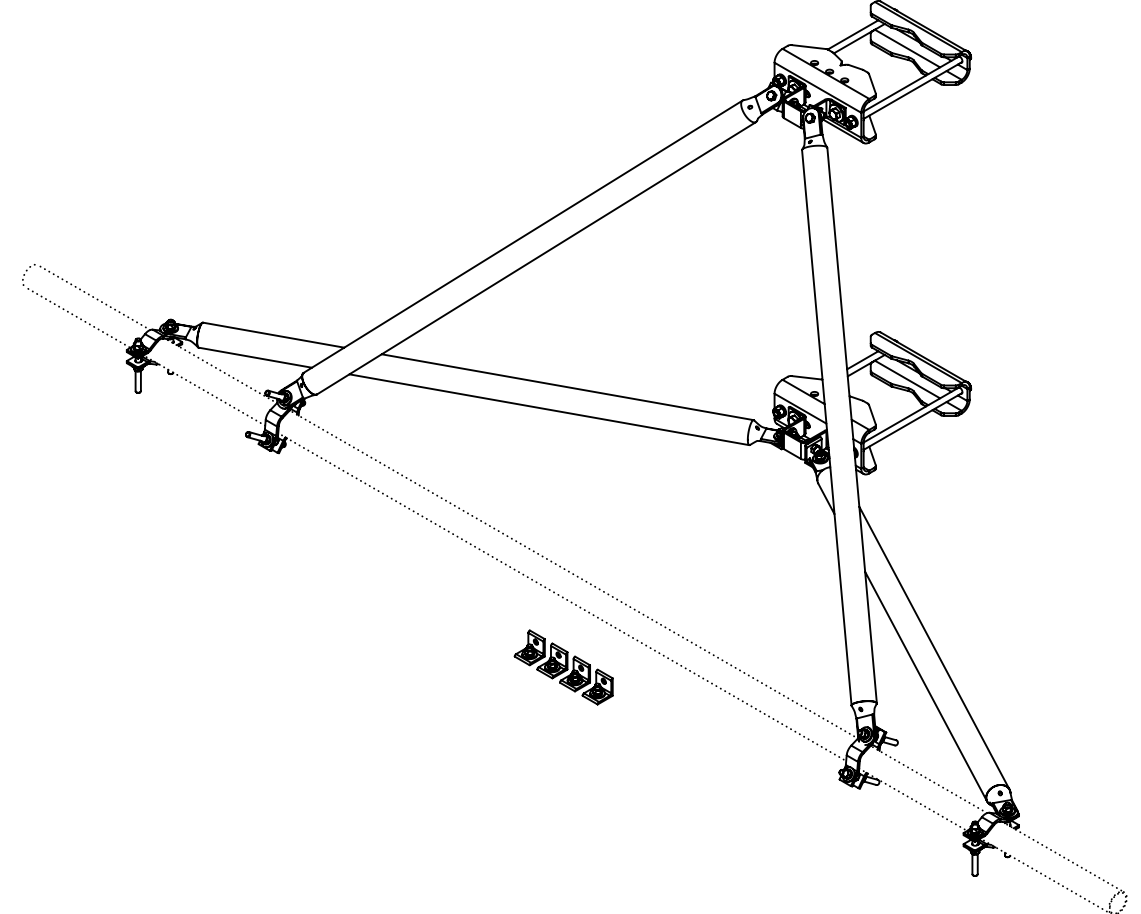
1

- NOTES:
- 1.0 GENERAL NOTES
    - 1.1 ALL METRIC DIMENSIONS ARE IN BRACKETS
    - 1.2 MARK PART WITH IDENTIFICATION NUMBER
  - 2.0 DESIGN NOTES
    - 2.1 FITS TOWER LEGS FROM 2" TO 8" OD
    - 2.2 ALL DIMENSIONS SHOWN ARE FOR REFERENCE ONLY
    - ALL CONNECTIONS ARE ADJUSTABLE. FINAL INSTALLED APPLICATION DICTATES FINISHED DIMENSIONS
  - 3.0 MANUFACTURING/SPECIAL REQUIREMENTS
    - 3.1 TIGHTEN ALL BOLTS SECURING FLAT PLATES BY THE TURN-OF-NUT METHOD. TIGHTEN ALL U-BOLTS USING TURN-OF-NUT METHOD WITH ATTENTION TO LEAVE EQUAL DISTANCE AND EQUAL FORCE ON EACH LEG OF THE U-BOLT.
  - 4.0 TEST
  - 5.0 PACKAGING
    - 5.1 PACKAGING SHALL MEET COMMSCOPE REQUIREMENTS PER DOCUMENT IS-PL-3005

REVISIONS				
REV.	ECN	DESCRIPTION	BY	DATE
A	8000018993	INITIAL RELEASE	DRR	1/11/17
B	11410	MTC3932-0062 WAS MTC393212	RJC	7/2/2021
C	40140785CMO	UPDATE NOTE 3.1 AND MODEL	LS1146	12/27/2021



UP TO ±30° AZIMUTH ADJUSTMENT OFF APEX



<b>COMMSCOPE, INC. OF NORTH CAROLINA</b>									
TOLERANCES					SAP MATERIAL MASTER				
0 PLACE X ± .25		2 PLACE .XX ± 0.06			<b>VSRDUAL-TS-B</b>				
1 PLACE .X ± 0.12		ANGLES ± 2°							
FINISH GALV A123					MATERIAL SEE SEPARATE BILLS OF MATERIAL				
UNLESS OTHERWISE SPECIFIED DIMENSIONS ARE IN INCHES INTERPRET PER ANSI Y 14.5M-1994	NAME	DATE	TITLE						
	CE RJC	07/02/21	<b>UNIVERSAL REINFORCEMENT KIT;SCTR FRAMES</b>						
	RW LS1146	12/29/2021							
	AD VCORTEZ1	01/21/2022							
	RE LS1146	02/08/2022							
ECN 11410PC									
SCALE	DOCUMENT NO.		<b>VSRDUAL-TS-B</b>						
<b>1:18</b>									
SIZE	Auth Group	INSL	MODEL			DRAWING			
<b>C</b>			VERSION	STATUS	REVISION	VERSION	STATUS	REVISION	SHEET
			00	RE	C	00	RE	C	1 OF 3

DENSITY	0.28	lbs/in <sup>3</sup>
MASS	124.91	lbs
VOLUME	442.46	in <sup>3</sup>
SURFACE AREA		in <sup>2</sup>
HEIGHT		
LENGTH		
WIDTH		

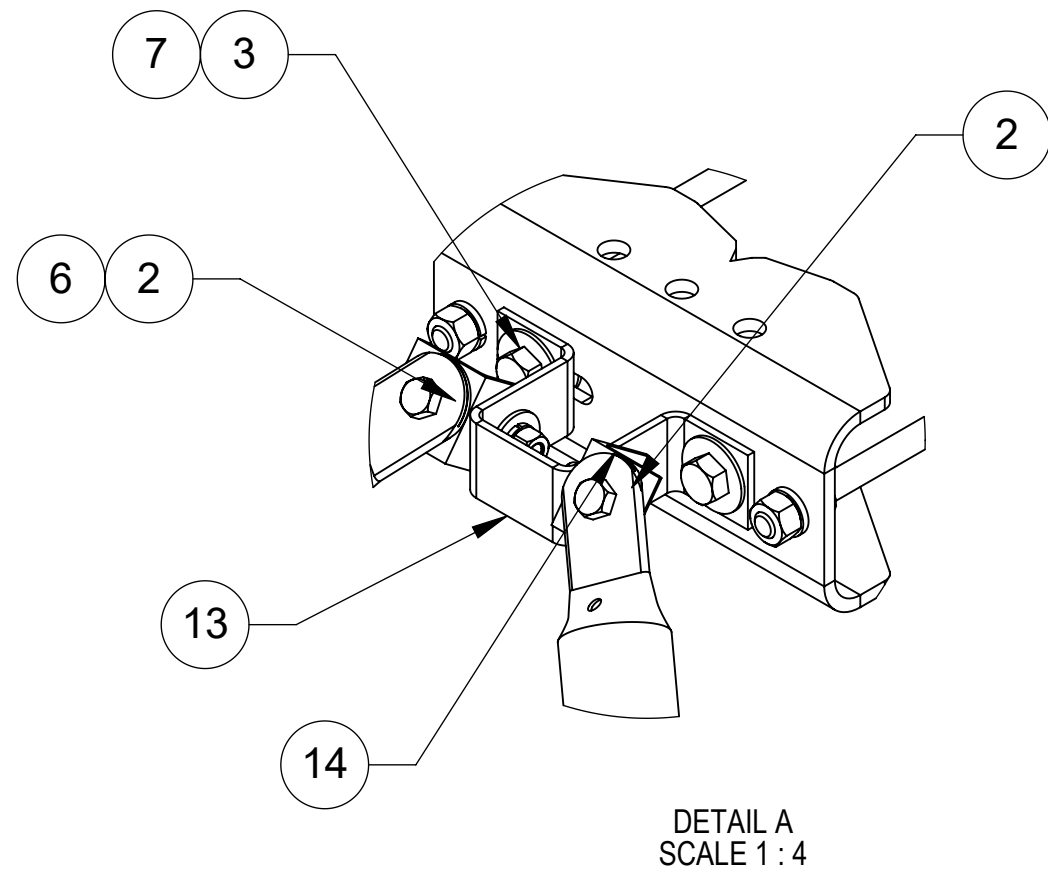
4

3

2

1

NOTES:



FITS  $\phi 1.9'' - \phi 3.5''$  PIPE FOR MOUNTING.  
MAY UTILIZE EXISTING SECTOR FRAME  
FACE PIPE OR ADDITIONAL HORIZONTAL  
ROUND SUPPORT MEMBER.  
(NOT INCLUDED)

PIVOT BRACKETS USED FOR ANGLE LEG APPLICATIONS  
WHEN MOUNT AZIMUTH IS NOT DIRECTLY OFF APEX  
**(SEE PAGE 3 FOR DETAILS)**

COMMSCOPE, INC. OF NORTH CAROLINA					
TITLE UNIVERSAL REINFORCEMENT KIT;SCTR FRAMES					
SIZE <b>C</b>	SCALE <b>1:8</b>	DOCUMENT NO. <b>VSRDUAL-TS-B</b>			
		DRAWING			SHEET
		VERSION	STATUS	REVISION	2 OF 3
		01	RE	CC	

4

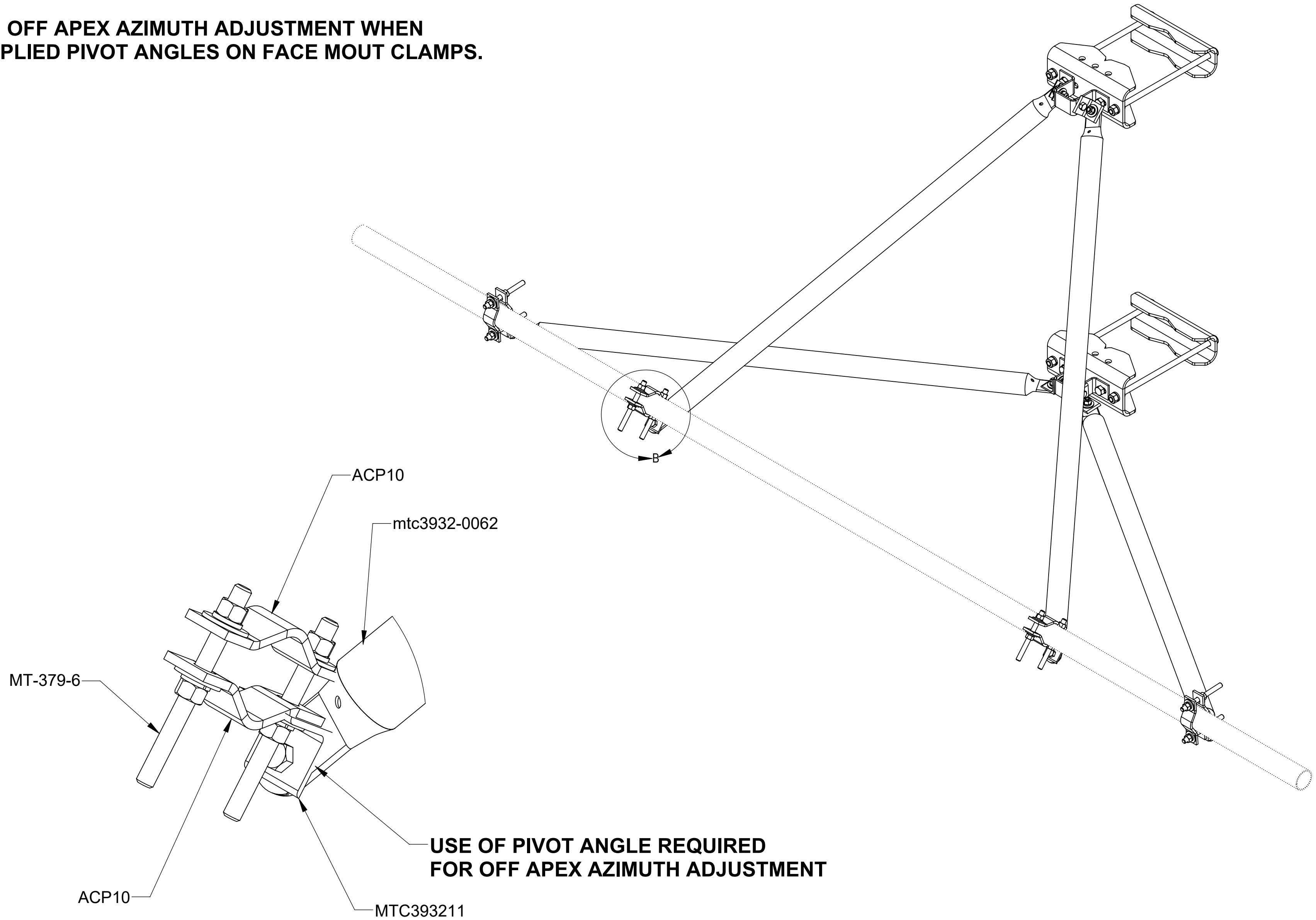
3

2


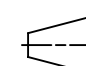
1

NOTES:

**UP TO  $\pm 30^\circ$  OFF APEX AZIMUTH ADJUSTMENT WHEN USING SUPPLIED PIVOT ANGLES ON FACE MOUNT CLAMPS.**



DETAIL B  
SCALE 1:2

COMMSCOPE, INC. OF NORTH CAROLINA				
TITLE UNIVERSAL REINFORCEMENT KIT;SCTR FRAMES				
SIZE <b>C</b>	SCALE <b>1:8</b>	DOCUMENT NO. VSRDUAL-TS-B		
 		DRAWING		SHEET
		VERSION 01	STATUS RE	REVISION CC

© 2021 CommScope, Inc. Confidential

4

3

2

1

D

D

C

C

B

B

A

A