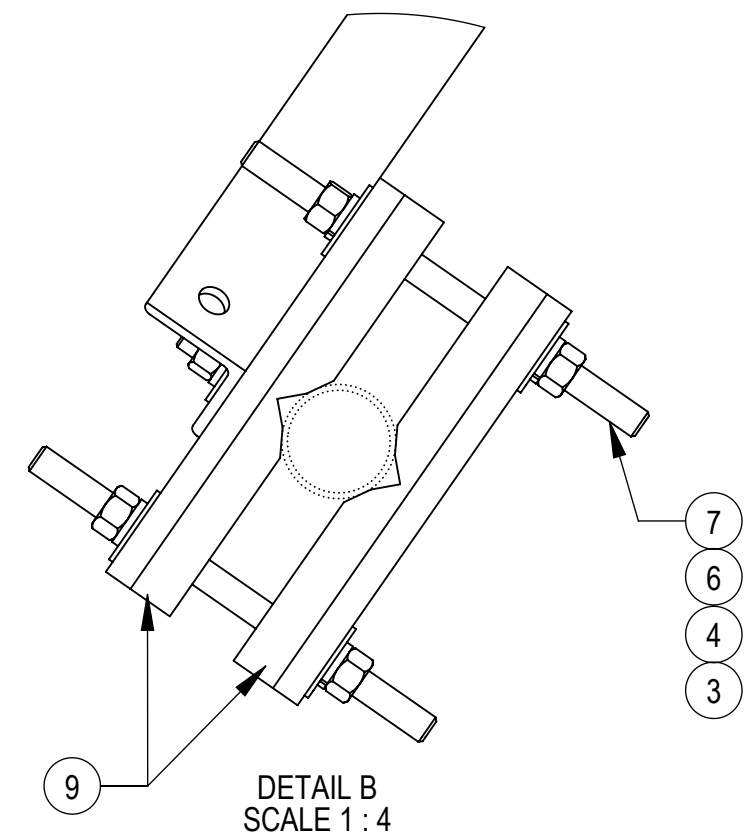
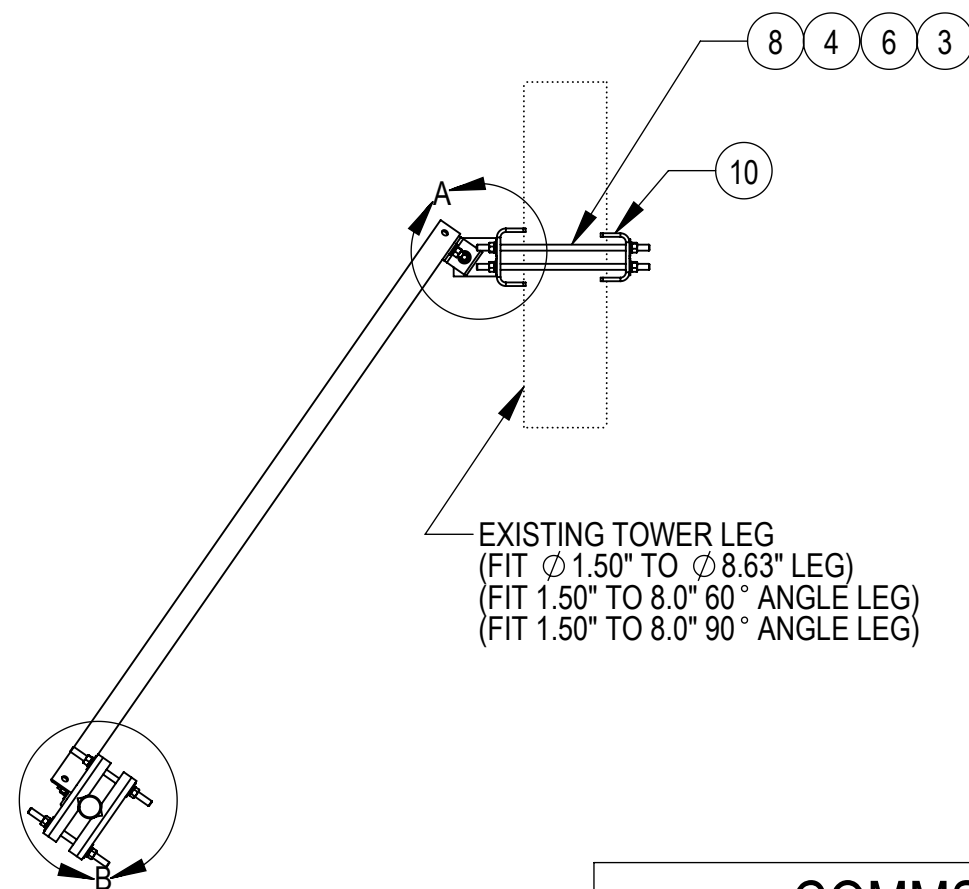
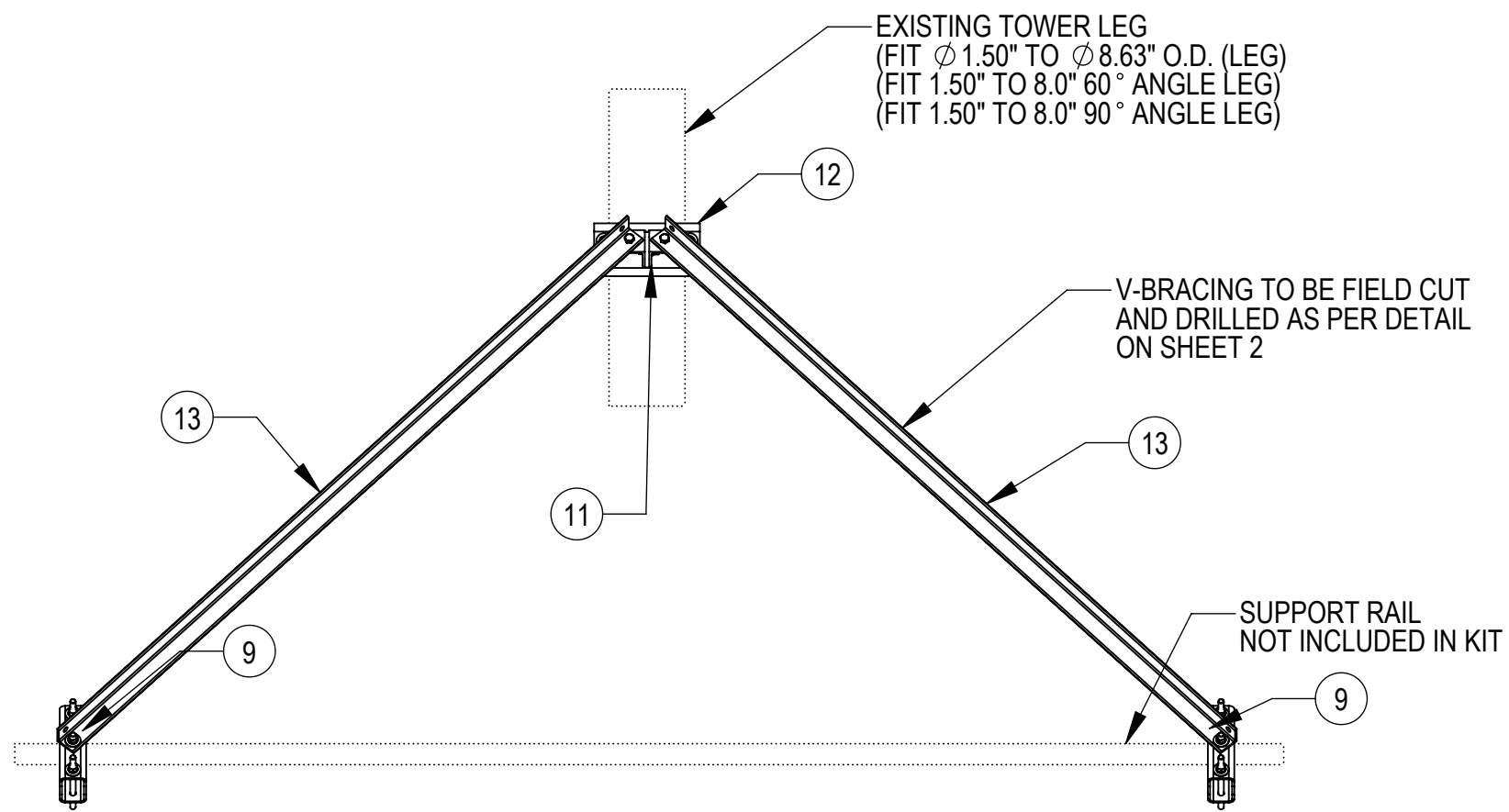
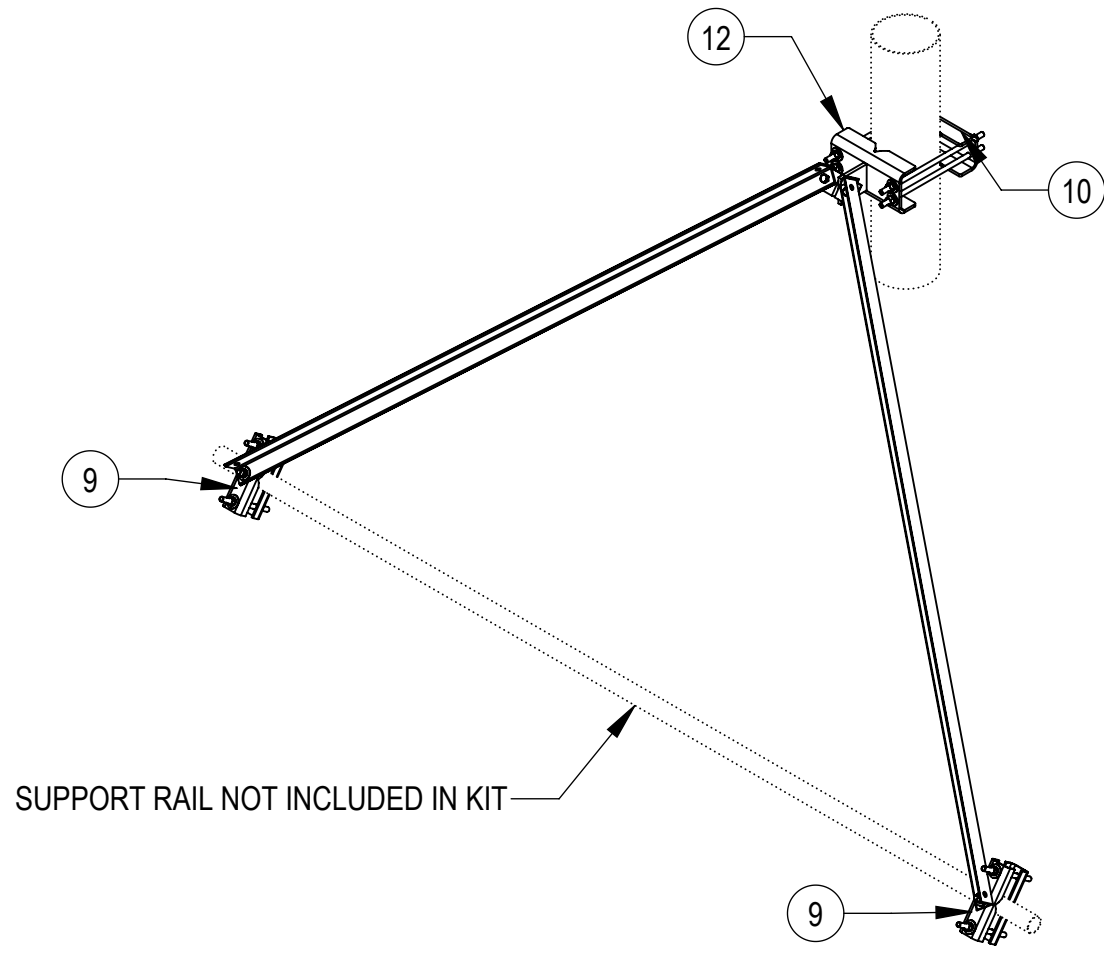
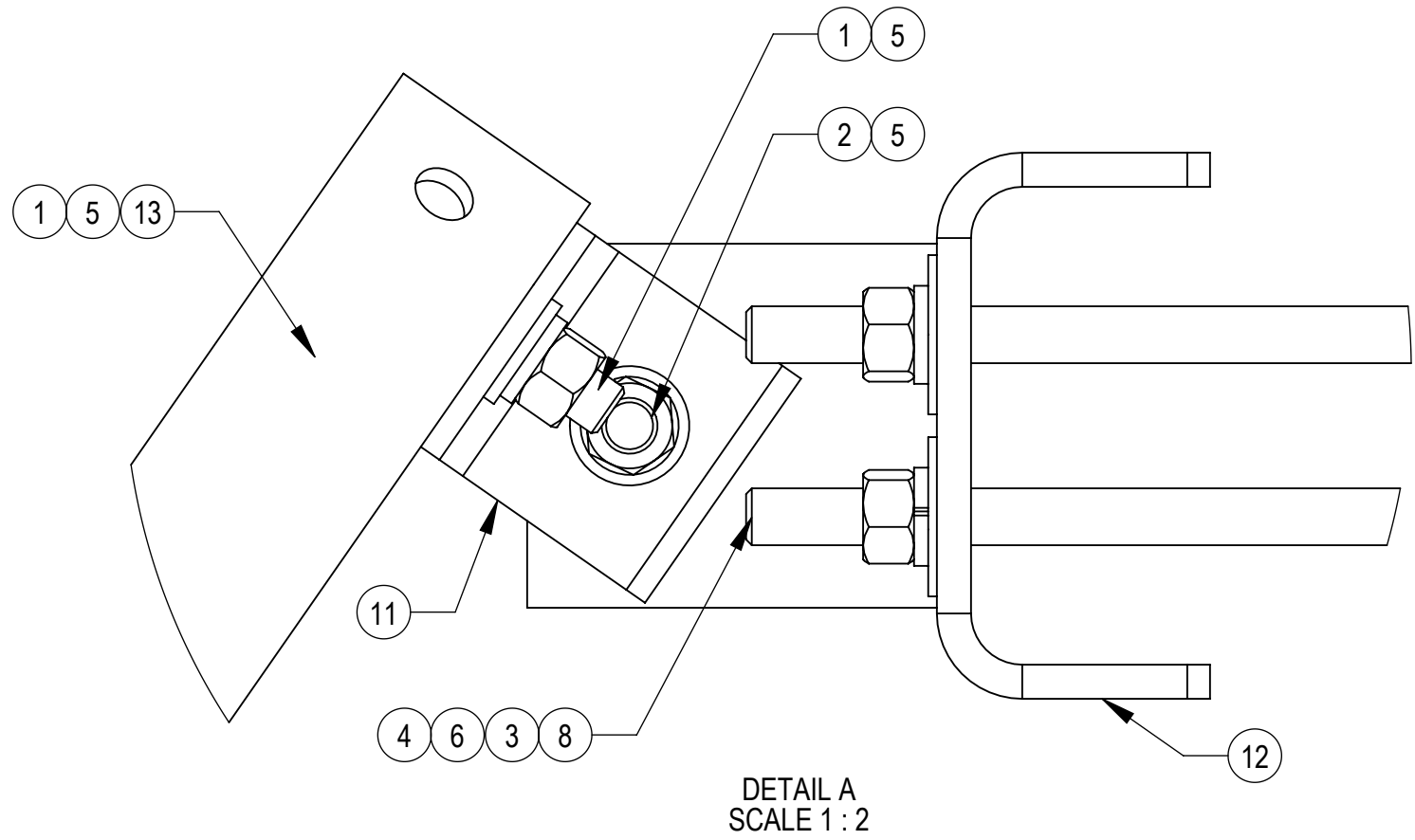


- NOTES:
 1.0 GENERAL
 1.1 ALL METRIC DIMENSIONS ARE IN BRACKETS
 1.2 MARK PART WITH IDENTIFICATION NUMBER
 2.0 DESIGN NOTES
 2.1 DESIGNED PER CUSTOMER REQUIREMENTS
 3.0 MANUFACTURING/SPECIAL REQUIREMENTS
 4.0 TEST
 5.0 PACKAGING

REVISIONS				
REV.	ECN	DESCRIPTION	BY	DATE
A	8000040209	INITIAL RELEASE	MRC	06/22/20
B	8000042875	UPDATE BRACKETS AND HARDWARE	MRC	09/17/20
C	13730	REPLACED 16" ALL THREAD MT-382-16 WITH 18" ALL THREAD MT-382-18	YMENG	7/20/2021
D	40141620CMO	ITEM 9 WAS MTC4104-0011	YMENG	2/8/2022
E	40146774CMO	ADDED GB-05165 AND GWF-05 TO THE CENTER OF THE CLAMP HALF ITEM 9	YH1102	4/15/2022



BOM IS FOR REFERENCE ONLY, PART NUMBER SUBSTITUTIONS MAY BE MADE

ITEM	PART NO.	DESCRIPTION	QTY.	NOTE NO.
1	GB-05165	5/8" X 1-3/4" GALV BOLT KIT	4	INCLUDES NUT, LOCK WASHER
2	GB-0522A	5/8" X 2-1/4" GALV BOLT KIT (A325)	1	INCLUDES NUT, LOCK WASHER
3	GN-05	5/8" GALV HEX NUT	16	
4	GWF-05	5/8" GALV FLAT WASHER, 1.70D	18	
5	GWF05A	GALV FLAT WASHER HARDENED 5/8", 1.30D	3	
6	GWL-05	5/8" GALV LOCK WASHER	16	
7	MT-381-10	5/8" X 10" GALV THREADED ROD	4	
8	MT-382-18	5/8" X 18" GALV THREADED ROD	4	
9	BP6875-10	CLAMP, V-BRACING FRONT	4	
10	SFK3-F1	BENT PLATE, .375 X 9.625 X 12.0	1	
11	SFK3-F2-2	ANGLE, 3 X 3 X 3	2	
12	SFK3-F3	WELDMENT, BRACKET	1	
13	VBSM-F5	ANGLE, 2.5 X 2.5 X .25 X 96	2	

COMMSCOPE, INC. OF NORTH CAROLINA

TOLERANCES		SAP MATERIAL MASTER	
0 PLACE X ± .25	2 PLACE .XX ± 0.06	VZWSMART-SFK3	
1 PLACE .X ± 0.12	ANGLES ± 2°		
FINISH GALV A123		MATERIAL A529, A1011/A1018	

UNLESS OTHERWISE SPECIFIED DIMENSIONS ARE IN INCHES INTERPRET PER ANSI Y 14.5M-1994	NAME	DATE	TITLE								
	CE RJC	04/02/20	V-BRACING FOR SECTOR MOUNT								
	RW YH1102	04/15/2022									
	RV										
AD BCROSS	04/20/2022	SCALE	DOCUMENT NO.								
RE YMENG	04/21/2022	1:20	VZWSMART-SFK3								
ECN 40146774CMO		SIZE	WORK AREA	INSL	MODEL	DRAWING			SHEET		
		C			VERSION	STATUS	REVISION	VERSION	STATUS	REVISION	1 OF 2
					01	RE	A	06	RE	E	

DENSITY	0.28	lbs/in ³
MASS	84.82	lbs
VOLUME	744.69	in ³
SURFACE AREA	7380.05	in ²
HEIGHT		
LENGTH		
WIDTH		

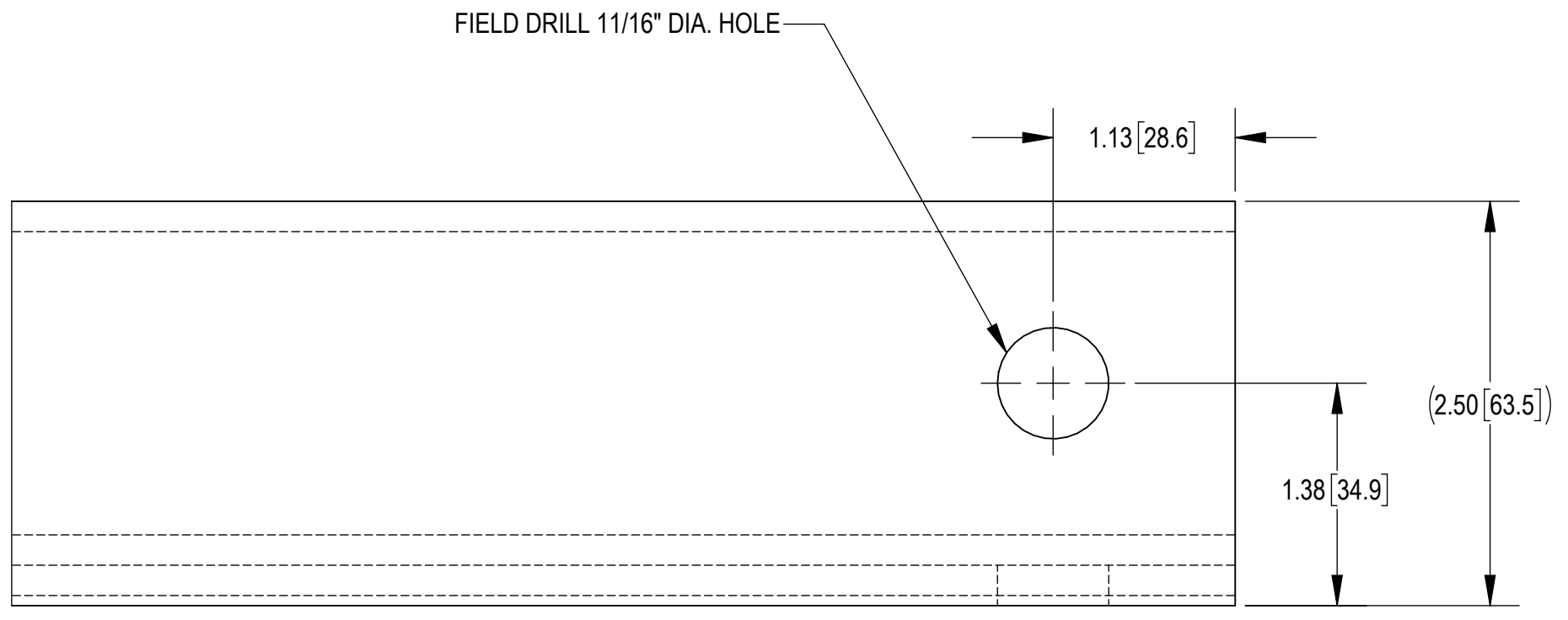
4

3


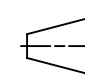
2

1

NOTES:



FIELD DRILL HOLE LOCATION

COMMSCOPE, INC. OF NORTH CAROLINA				
TITLE V-BRACING FOR SECTOR MOUNT				
SIZE C	SCALE 1:1	DOCUMENT NO. VZWSMART-SFK3		
 		DRAWING		SHEET
		VERSION 06	STATUS RE	REVISION E

© 2022 CommScope, Inc.

4

3

2

1

D

D

C

C

B

B

A

A