

RRV4-65D-R6-V5



12-port sector antenna, 4x 694–960 and 8x 1695–2690 MHz, 65° HPBW, 6x RET

- All Internal RET actuators are connected in “Cascaded SRET” configuration
- New aerodynamic endcaps for wind load optimization

General Specifications

| | |
|--|--|
| Antenna Type | Sector |
| Band | Multiband |
| Color | Light Gray (RAL 7035) |
| Grounding Type | RF connector inner conductor and body grounded to reflector and mounting bracket |
| Performance Note | Outdoor usage |
| Radome Material | Fiberglass, UV resistant |
| Reflector Material | Aluminum |
| RF Connector Interface | 4.3-10 Female |
| RF Connector Quantity, mid band | 8 |
| RF Connector Quantity, low band | 4 |
| RF Connector Quantity, total | 12 |

Remote Electrical Tilt (RET) Information

| | |
|---|-----------------------------|
| RET Hardware | CommRET v2 |
| RET Interface, quantity | 1 female 1 male |
| Input Voltage | 10–30 Vdc |
| Internal RET | Low band (2) Mid band (4) |
| Power Consumption, active state, maximum | 8 W |
| Power Consumption, idle state, maximum | 1 W |
| Protocol | 3GPP/AISG 2.0 |

Dimensions

| | |
|---------------|----------------------|
| Width | 498 mm 19.606 in |
| Depth | 197 mm 7.756 in |
| Length | 2688 mm 105.827 in |

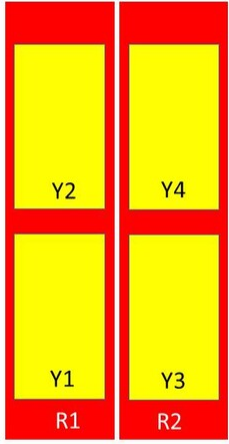
RRV4-65D-R6-V5

Net Weight, antenna only

42 kg | 92.594 lb

Array Layout

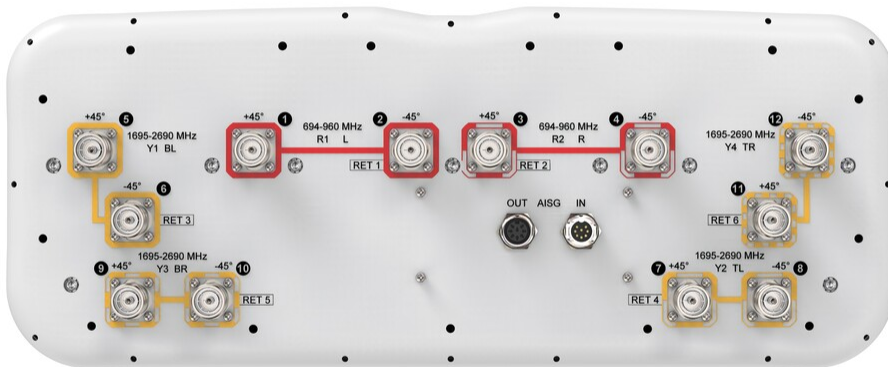
| Array | Freq (MHz) | Conns | RET (SRET) | AISG RET UID |
|-------|------------|-------|------------|----------------------|
| R1 | 694-960 | 1-2 | 1 | CPxxxxxxxxxxxxxxxxR1 |
| R2 | 694-960 | 3-4 | 2 | CPxxxxxxxxxxxxxxxxR2 |
| Y1 | 1695-2690 | 5-6 | 3 | CPxxxxxxxxxxxxxxxxY1 |
| Y2 | 1695-2690 | 7-8 | 4 | CPxxxxxxxxxxxxxxxxY2 |
| Y3 | 1695-2690 | 9-10 | 5 | CPxxxxxxxxxxxxxxxxY3 |
| Y4 | 1695-2690 | 11-12 | 6 | CPxxxxxxxxxxxxxxxxY4 |



Left Bottom Right

(Sizes of colored boxes are not true depictions of array sizes)

Port Configuration



RRV4-65D-R6-V5

Electrical Specifications

| | |
|-----------------------------------|---------------------------------|
| Impedance | 50 ohm |
| Operating Frequency Band | 1695 – 2690 MHz 694 – 960 MHz |
| Polarization | ±45° |
| Total Input Power, maximum | 1,400 W @ 50 °C |

Electrical Specifications

| Frequency Band, MHz | 694–790 | 790–890 | 890–960 | 1695–1880 | 1850–1990 | 1920–2180 | 2300–2500 | 2500–2690 |
|---|----------|----------|----------|-----------|-----------|-----------|-----------|-----------|
| Gain, dBi | 16.1 | 16.4 | 16.7 | 17.7 | 18.2 | 18.4 | 18.5 | 17.5 |
| Beamwidth, Horizontal, degrees | 66 | 61 | 65 | 62 | 59 | 58 | 64 | 73 |
| Beamwidth, Vertical, degrees | 8.2 | 7.4 | 6.9 | 7.2 | 6.7 | 6.4 | 5.6 | 5.3 |
| Beam Tilt, degrees | 2–12 | 2–12 | 2–12 | 2–12 | 2–12 | 2–12 | 2–12 | 2–12 |
| USLS (First Lobe), dB | 20 | 15 | 20 | 16 | 18 | 19 | 18 | 20 |
| Front-to-Back Ratio at 180°, dB | 34 | 32 | 33 | 39 | 39 | 39 | 34 | 32 |
| CPR at Boresight, dB | 30 | 27 | 20 | 20 | 21 | 22 | 20 | 18 |
| CPR at Sector, dB | 9 | 8 | 8 | 10 | 10 | 7 | 6 | 5 |
| Isolation, Cross Polarization, dB | 28 | 28 | 28 | 28 | 28 | 28 | 28 | 28 |
| Isolation, Inter-band, dB | 28 | 28 | 28 | 28 | 28 | 28 | 28 | 28 |
| VSWR Return loss, dB | 1.5 14.0 | 1.5 14.0 | 1.5 14.0 | 1.5 14.0 | 1.5 14.0 | 1.5 14.0 | 1.5 14.0 | 1.5 14.0 |
| PIM, 3rd Order, 2 x 20 W, dBc | -150 | -150 | -150 | -150 | -150 | -150 | -150 | -150 |
| Input Power per Port at 50°C, maximum, watts | 300 | 300 | 300 | 250 | 250 | 250 | 200 | 200 |

Electrical Specifications, BASTA

| Frequency Band, MHz | 694–790 | 790–890 | 890–960 | 1695–1880 | 1850–1990 | 1920–2180 | 2300–2500 | 2500–2690 |
|---|---------|---------|---------|-----------|-----------|-----------|-----------|-----------|
| Gain by all Beam Tilts, average, dBi | 15.8 | 16 | 16.4 | 17.3 | 17.9 | 18.1 | 17.9 | 17.2 |
| Gain by all Beam Tilts Tolerance, dB | ±0.4 | ±0.6 | ±0.5 | ±0.6 | ±0.4 | ±0.4 | ±0.9 | ±0.4 |
| Beamwidth, Horizontal Tolerance, degrees | ±2.7 | ±6.3 | ±10.9 | ±3.9 | ±2.9 | ±3.8 | ±9.9 | ±4.2 |
| Beamwidth, Vertical Tolerance, degrees | ±0.5 | ±0.6 | ±0.4 | ±0.4 | ±0.2 | ±0.3 | ±0.3 | ±0.2 |
| USLS, beampeak to 20° above | 15 | 13 | 15 | 13 | 14 | 14 | 14 | 14 |

RRV4-65D-R6-V5

beampeak, dB

| | | | | | | | | |
|--|----|----|----|----|----|----|----|----|
| Front-to-Back Total Power at 180° ± 30°, dB | 22 | 21 | 21 | 31 | 32 | 30 | 27 | 26 |
| CPR at Boresight, dB | 30 | 27 | 20 | 20 | 21 | 22 | 20 | 18 |
| CPR at Sector, dB | 9 | 8 | 8 | 10 | 10 | 7 | 6 | 5 |

Mechanical Specifications

| | |
|---|---|
| Wind Loading @ Velocity, frontal | 970.0 N @ 150 km/h (218.1 lbf @ 150 km/h) |
| Wind Loading @ Velocity, lateral | 304.0 N @ 150 km/h (68.3 lbf @ 150 km/h) |
| Wind Loading @ Velocity, maximum | 1,162.0 N @ 150 km/h (261.2 lbf @ 150 km/h) |
| Wind Loading @ Velocity, rear | 667.0 N @ 150 km/h (149.9 lbf @ 150 km/h) |
| Wind Speed, maximum | 241 km/h (150 mph) |

Packaging and Weights

| | |
|-----------------------|----------------------|
| Width, packed | 565 mm 22.244 in |
| Depth, packed | 309 mm 12.165 in |
| Length, packed | 2875 mm 113.189 in |
| Weight, gross | 59 kg 130.073 lb |

Regulatory Compliance/Certifications

| Agency | Classification |
|---------------|--|
| ISO 9001:2015 | Designed, manufactured and/or distributed under this quality management system |



Included Products

| | | |
|----------|---|--|
| BSAMNT-4 | – | Wide Profile Antenna Downtilt Mounting Kit for 2.4 - 4.5 in (60 - 115 mm) OD round members. Kit contains one scissor top bracket set and one bottom bracket set. |
|----------|---|--|

* Footnotes

| | |
|-------------------------|---|
| Performance Note | Severe environmental conditions may degrade optimum performance |
|-------------------------|---|

BSAMNT-4



Wide Profile Antenna Downtilt Mounting Kit for 2.4 - 4.5 in (60 - 115 mm) OD round members. Kit contains one scissor top bracket set and one bottom bracket set.

Product Classification

Product Type Downtilt mounting kit

General Specifications

Application Outdoor

Color Silver

Dimensions

Compatible Diameter, maximum 115 mm | 4.528 in

Compatible Diameter, minimum 60 mm | 2.362 in

Weight, net 6.5 kg | 14.33 lb

Material Specifications

Material Type Galvanized steel

Packaging and Weights

Included Brackets | Hardware

Packaging quantity 1

Regulatory Compliance/Certifications

| Agency | Classification |
|---------------|--|
| CHINA-ROHS | Below maximum concentration value |
| ISO 9001:2015 | Designed, manufactured and/or distributed under this quality management system |
| REACH-SVHC | Compliant as per SVHC revision on www.commscope.com/ProductCompliance |
| ROHS | Compliant |
| UK-ROHS | Compliant |

