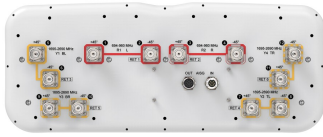


RRV4-65D-R6-V5



12-port sector antenna, 4x 694–960 and 8x 1695–2690 MHz, 65° HPBW, 6x RET

- All Internal RET actuators are connected in “Cascaded SRET” configuration
- New aerodynamic endcaps for wind load optimization

General Specifications

| | |
|--|--|
| Antenna Type | Sector |
| Band | Multiband |
| Color | Light Gray (RAL 7035) |
| Grounding Type | RF connector inner conductor and body grounded to reflector and mounting bracket |
| Performance Note | Outdoor usage |
| Radome Material | Fiberglass, UV resistant |
| Reflector Material | Aluminum |
| RF Connector Interface | 4.3-10 Female |
| RF Connector Quantity, mid band | 8 |
| RF Connector Quantity, low band | 4 |
| RF Connector Quantity, total | 12 |

Remote Electrical Tilt (RET) Information

| | |
|---|-----------------------------|
| RET Hardware | CommRET v2 |
| RET Interface, quantity | 1 female 1 male |
| Input Voltage | 10–30 Vdc |
| Internal RET | Low band (2) Mid band (4) |
| Power Consumption, active state, maximum | 8 W |
| Power Consumption, idle state, maximum | 1 W |
| Protocol | 3GPP/AISG 2.0 |

Dimensions

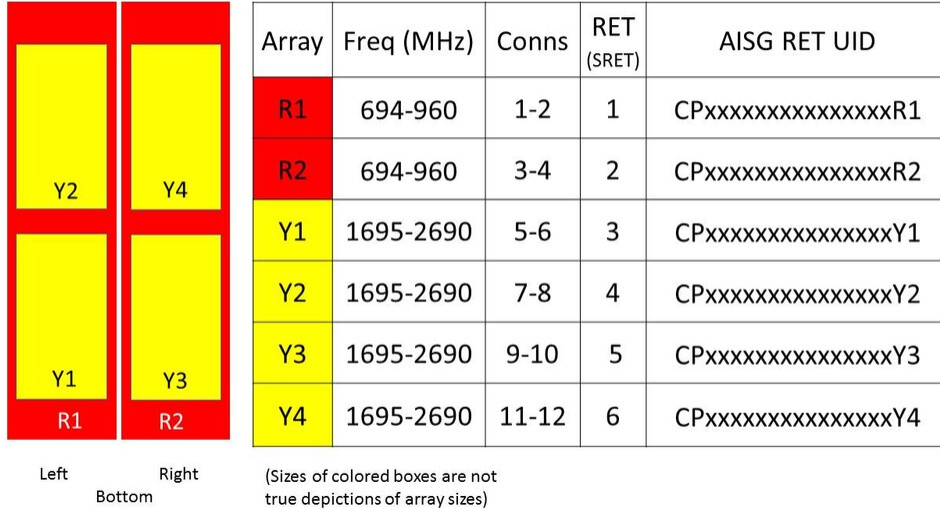
| | |
|---------------|----------------------|
| Width | 498 mm 19.606 in |
| Depth | 197 mm 7.756 in |
| Length | 2688 mm 105.827 in |

RRV4-65D-R6-V5

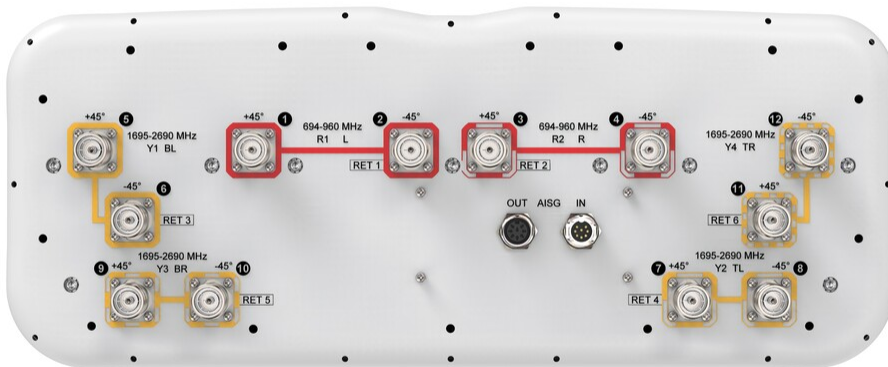
Net Weight, antenna only

42 kg | 92.594 lb

Array Layout



Port Configuration



RRV4-65D-R6-V5

Electrical Specifications

| | |
|-----------------------------------|---------------------------------|
| Impedance | 50 ohm |
| Operating Frequency Band | 1695 – 2690 MHz 694 – 960 MHz |
| Polarization | ±45° |
| Total Input Power, maximum | 1,400 W @ 50 °C |

Electrical Specifications

| Frequency Band, MHz | 694–790 | 790–890 | 890–960 | 1695–1880 | 1850–1990 | 1920–2180 | 2300–2500 | 2500–2690 |
|---|----------|----------|----------|-----------|-----------|-----------|-----------|-----------|
| Gain, dBi | 16.1 | 16.4 | 16.7 | 17.7 | 18.2 | 18.4 | 18.5 | 17.5 |
| Beamwidth, Horizontal, degrees | 66 | 61 | 65 | 62 | 59 | 58 | 64 | 73 |
| Beamwidth, Vertical, degrees | 8.2 | 7.4 | 6.9 | 7.2 | 6.7 | 6.4 | 5.6 | 5.3 |
| Beam Tilt, degrees | 2–12 | 2–12 | 2–12 | 2–12 | 2–12 | 2–12 | 2–12 | 2–12 |
| USLS (First Lobe), dB | 20 | 15 | 20 | 16 | 18 | 19 | 18 | 20 |
| Front-to-Back Ratio at 180°, dB | 34 | 32 | 33 | 39 | 39 | 39 | 34 | 32 |
| CPR at Boresight, dB | 30 | 27 | 20 | 20 | 21 | 22 | 20 | 18 |
| CPR at Sector, dB | 9 | 8 | 8 | 10 | 10 | 7 | 6 | 5 |
| Isolation, Cross Polarization, dB | 28 | 28 | 28 | 28 | 28 | 28 | 28 | 28 |
| Isolation, Inter-band, dB | 28 | 28 | 28 | 28 | 28 | 28 | 28 | 28 |
| VSWR Return loss, dB | 1.5 14.0 | 1.5 14.0 | 1.5 14.0 | 1.5 14.0 | 1.5 14.0 | 1.5 14.0 | 1.5 14.0 | 1.5 14.0 |
| PIM, 3rd Order, 2 x 20 W, dBc | -150 | -150 | -150 | -150 | -150 | -150 | -150 | -150 |
| Input Power per Port at 50°C, maximum, watts | 300 | 300 | 300 | 250 | 250 | 250 | 200 | 200 |

Electrical Specifications, BASTA

| Frequency Band, MHz | 694–790 | 790–890 | 890–960 | 1695–1880 | 1850–1990 | 1920–2180 | 2300–2500 | 2500–2690 |
|---|---------|---------|---------|-----------|-----------|-----------|-----------|-----------|
| Gain by all Beam Tilts, average, dBi | 15.8 | 16 | 16.4 | 17.3 | 17.9 | 18.1 | 17.9 | 17.2 |
| Gain by all Beam Tilts Tolerance, dB | ±0.4 | ±0.6 | ±0.5 | ±0.6 | ±0.4 | ±0.4 | ±0.9 | ±0.4 |
| Beamwidth, Horizontal Tolerance, degrees | ±2.7 | ±6.3 | ±10.9 | ±3.9 | ±2.9 | ±3.8 | ±9.9 | ±4.2 |
| Beamwidth, Vertical Tolerance, degrees | ±0.5 | ±0.6 | ±0.4 | ±0.4 | ±0.2 | ±0.3 | ±0.3 | ±0.2 |
| USLS, beampeak to 20° above | 15 | 13 | 15 | 13 | 14 | 14 | 14 | 14 |

RRV4-65D-R6-V5

beampeak, dB

| | | | | | | | | |
|--|----|----|----|----|----|----|----|----|
| Front-to-Back Total Power at 180° ± 30°, dB | 22 | 21 | 21 | 31 | 32 | 30 | 27 | 26 |
| CPR at Boresight, dB | 30 | 27 | 20 | 20 | 21 | 22 | 20 | 18 |
| CPR at Sector, dB | 9 | 8 | 8 | 10 | 10 | 7 | 6 | 5 |

Mechanical Specifications

| | |
|---|---|
| Wind Loading @ Velocity, frontal | 970.0 N @ 150 km/h (218.1 lbf @ 150 km/h) |
| Wind Loading @ Velocity, lateral | 304.0 N @ 150 km/h (68.3 lbf @ 150 km/h) |
| Wind Loading @ Velocity, maximum | 1,162.0 N @ 150 km/h (261.2 lbf @ 150 km/h) |
| Wind Loading @ Velocity, rear | 667.0 N @ 150 km/h (149.9 lbf @ 150 km/h) |
| Wind Speed, maximum | 241 km/h (150 mph) |

Packaging and Weights

| | |
|-----------------------|----------------------|
| Width, packed | 565 mm 22.244 in |
| Depth, packed | 309 mm 12.165 in |
| Length, packed | 2875 mm 113.189 in |
| Weight, gross | 59 kg 130.073 lb |

Regulatory Compliance/Certifications

| Agency | Classification |
|---------------|--|
| ISO 9001:2015 | Designed, manufactured and/or distributed under this quality management system |



Included Products

| | | |
|----------|---|--|
| BSAMNT-4 | – | Wide Profile Antenna Downtilt Mounting Kit for 2.4 - 4.5 in (60 - 115 mm) OD round members. Kit contains one scissor top bracket set and one bottom bracket set. |
|----------|---|--|

* Footnotes

| | |
|-------------------------|---|
| Performance Note | Severe environmental conditions may degrade optimum performance |
|-------------------------|---|