

FFVV-65C-R2-HG



8-port sector antenna, 4X 617-894 and 4X 1695-2690 MHz, 65°HPBW, 2X RET

- Antenna design optimized to offer high gain performances
- Broadband performance 617-894 MHz and 1695-2690 MHz

General Specifications

Antenna Type	Sector
Band	Multiband
Grounding Type	RF connector inner conductor and body grounded to reflector and mounting bracket
Performance Note	Outdoor usage
RF Connector Interface	4.3-10 Female
RF Connector Location	Bottom
RF Connector Quantity, mid band	4
RF Connector Quantity, low band	4
RF Connector Quantity, total	8

Remote Electrical Tilt (RET) Information

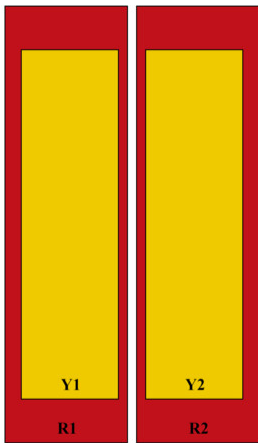
RET Hardware	CommRET v2
RET Interface	8-pin DIN Female 8-pin DIN Male
RET Interface, quantity	1 female 1 male
Input Voltage	10–30 Vdc
Internal RET	Low band (1) Mid band (1)
Power Consumption, active state, maximum	10 W
Power Consumption, idle state, maximum	2 W
Protocol	3GPP/AISG 2.0 (Single RET)

Dimensions

Width	640 mm 25.197 in
Depth	235 mm 9.252 in
Length	2438 mm 95.984 in
Net Weight, antenna only	59.5 kg 131.175 lb

FFVV-65C-R2-HG

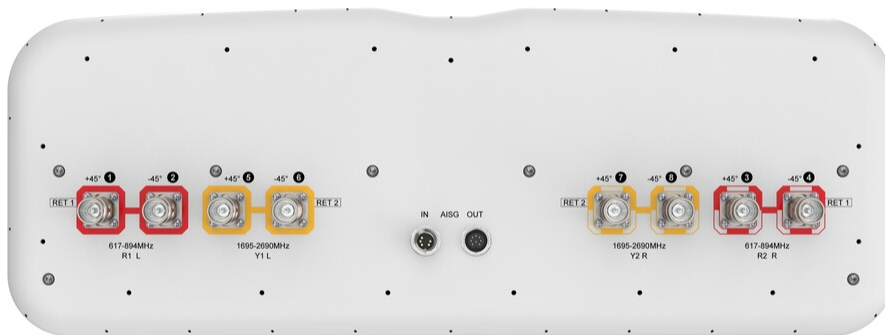
Array Layout



Array ID	Frequency (MHz)	RF Connector	RET (SRET)	AISG No.	AISG RET UID
R1	617-894	1 - 2	1	AISG1	CPxxxxxxxxxxxxxxxxR1
R2	617-894	3 - 4			
Y1	1695-2690	5 - 6	2	AISG1	CPxxxxxxxxxxxxxxxxY1
Y2	1695-2690	7 - 8			

(Sizes of colored boxes are not true depictions of array sizes)

Port Configuration



Electrical Specifications

Impedance	50 ohm
Operating Frequency Band	1695 – 2690 MHz 617 – 894 MHz
Polarization	±45°
Total Input Power, maximum	900 W @ 50 °C

FFVV-65C-R2-HG

Electrical Specifications

	R1,R2	R1,R2	Y1,Y2	Y1,Y2	Y1,Y2	Y1,Y2	Y1,Y2
Frequency Band, MHz	617-698	698-894	1695-1880	1850-1990	1920-2200	2300-2500	2500-2690
RF Port	1-4	1-4	5-8	5-8	5-8	5-8	5-8
Gain, dBi	16	16.7	19.5	19.9	20	19.7	20.2
Beamwidth, Horizontal, degrees	68	62	65	59	61	67	57
Beamwidth, Vertical, degrees	10.2	8.6	4.2	4.1	3.9	3.4	3.2
Beam Tilt, degrees	2-12	2-12	2-9	2-9	2-9	2-9	2-9
USLS (First Lobe), dB	15	16	17	16	17	17	19
Front-to-Back Ratio at 180°, dB	30	33	37	38	36	35	34
Front-to-Back Total Power at 180° ± 30°, dB	22	23	30	31	29	27	26
Isolation, Cross Polarization, dB	25	25	25	25	25	25	25
Isolation, Inter-band, dB	25	25	25	25	25	25	25
VSWR Return loss, dB	1.5 14.0	1.5 14.0	1.5 14.0	1.5 14.0	1.5 14.0	1.5 14.0	1.5 14.0
PIM, 3rd Order, 2 x 20 W, dBc	-150	-150	-150	-150	-150	-150	-150
Input Power per Port at 50°C, maximum, watts	250	250	200	200	200	200	200

Electrical Specifications, BASTA

	617-698	698-894	1695-1880	1850-1990	1920-2200	2300-2500	2500-2690
Frequency Band, MHz	617-698	698-894	1695-1880	1850-1990	1920-2200	2300-2500	2500-2690
CPR at Boresight, dB	16	16	25	23	19	21	27

Mechanical Specifications

Wind Loading @ Velocity, frontal	987.0 N @ 150 km/h (221.9 lbf @ 150 km/h)
Wind Loading @ Velocity, lateral	291.0 N @ 150 km/h (65.4 lbf @ 150 km/h)
Wind Loading @ Velocity, maximum	1,257.0 N @ 150 km/h (282.6 lbf @ 150 km/h)
Wind Loading @ Velocity, rear	616.0 N @ 150 km/h (138.5 lbf @ 150 km/h)
Wind Speed, maximum	241 km/h (150 mph)

Packaging and Weights

Width, packed	744 mm 29.291 in
Depth, packed	384 mm 15.118 in

FFVV-65C-R2-HG

Length, packed 2590 mm | 101.969 in

Weight, gross 75 kg | 165.347 lb

Regulatory Compliance/Certifications

Agency

ISO 9001:2015

Classification

Designed, manufactured and/or distributed under this quality management system

Included Products

- BSAMNT-3F – Mounting bracket for cylindrical pipe installations (60-115mm pipe diameter) for fix mechanical tilt applications.

* Footnotes

Performance Note Severe environmental conditions may degrade optimum performance

BSAMNT-3F



Mounting bracket for cylindrical pipe installations (60-115mm pipe diameter) for fix mechanical tilt applications.

Product Classification

Product Type Fixed tilt mounting kit

General Specifications

Application Outdoor

Color Silver

Dimensions

Compatible Diameter, maximum 115 mm | 4.528 in

Compatible Diameter, minimum 60 mm | 2.362 in

Weight, net 5.6 kg | 12.346 lb

Material Specifications

Material Type Galvanized steel

Packaging and Weights

Included Brackets | Hardware

Packaging quantity 1

Weight, gross 5.8 kg | 12.787 lb

Regulatory Compliance/Certifications

Agency	Classification
CE	Compliant with the relevant CE product directives
CHINA-ROHS	Below maximum concentration value
ISO 9001:2015	Designed, manufactured and/or distributed under this quality management system
REACH-SVHC	Compliant as per SVHC revision on www.commscope.com/ProductCompliance
ROHS	Compliant
UK-ROHS	Compliant

BSAMNT-3F

