

# FFVV-65C-R2-HG



8-port sector antenna, 4X 617-894 and 4X 1695-2690 MHz, 65°HPBW, 2X RET

- Antenna design optimized to offer high gain performances
- Broadband performance 617-894 MHz and 1695-2690 MHz

## General Specifications

<b>Antenna Type</b>	Sector
<b>Band</b>	Multiband
<b>Grounding Type</b>	RF connector inner conductor and body grounded to reflector and mounting bracket
<b>Performance Note</b>	Outdoor usage
<b>RF Connector Interface</b>	4.3-10 Female
<b>RF Connector Location</b>	Bottom
<b>RF Connector Quantity, mid band</b>	4
<b>RF Connector Quantity, low band</b>	4
<b>RF Connector Quantity, total</b>	8

## Remote Electrical Tilt (RET) Information

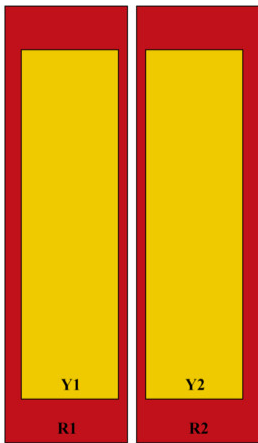
<b>RET Hardware</b>	CommRET v2
<b>RET Interface</b>	8-pin DIN Female   8-pin DIN Male
<b>RET Interface, quantity</b>	1 female   1 male
<b>Input Voltage</b>	10–30 Vdc
<b>Internal RET</b>	Low band (1)   Mid band (1)
<b>Power Consumption, active state, maximum</b>	10 W
<b>Power Consumption, idle state, maximum</b>	2 W
<b>Protocol</b>	3GPP/AISG 2.0 (Single RET)

## Dimensions

<b>Width</b>	640 mm   25.197 in
<b>Depth</b>	235 mm   9.252 in
<b>Length</b>	2438 mm   95.984 in
<b>Net Weight, antenna only</b>	59.5 kg   131.175 lb

# FFVV-65C-R2-HG

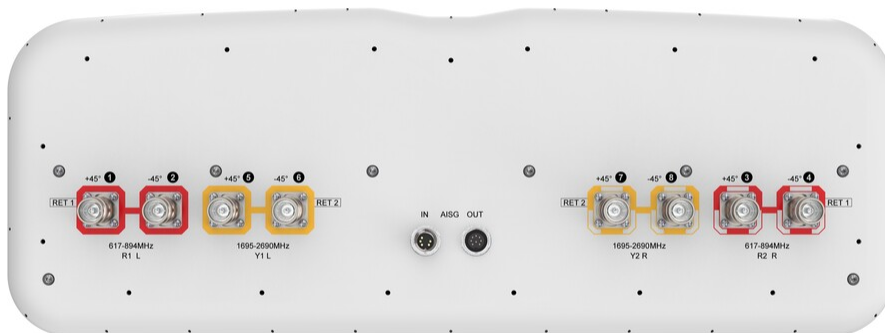
## Array Layout



Array ID	Frequency (MHz)	RF Connector	RET (SRET)	AISG No.	AISG RET UID
R1	617-894	1 - 2	1	AISG1	CPxxxxxxxxxxxxxxxxR1
R2	617-894	3 - 4			
Y1	1695-2690	5 - 6	2	AISG1	CPxxxxxxxxxxxxxxxxY1
Y2	1695-2690	7 - 8			

(Sizes of colored boxes are not true depictions of array sizes)

## Port Configuration



## Electrical Specifications

<b>Impedance</b>	50 ohm
<b>Operating Frequency Band</b>	1695 – 2690 MHz   617 – 894 MHz
<b>Polarization</b>	±45°
<b>Total Input Power, maximum</b>	900 W @ 50 °C

# FFVV-65C-R2-HG

## Electrical Specifications

	R1,R2	R1,R2	Y1,Y2	Y1,Y2	Y1,Y2	Y1,Y2	Y1,Y2
<b>Frequency Band, MHz</b>	<b>617-698</b>	<b>698-894</b>	<b>1695-1880</b>	<b>1850-1990</b>	<b>1920-2200</b>	<b>2300-2500</b>	<b>2500-2690</b>
<b>RF Port</b>	1-4	1-4	5-8	5-8	5-8	5-8	5-8
<b>Gain, dBi</b>	16	16.7	19.5	19.9	20	19.7	20.2
<b>Beamwidth, Horizontal, degrees</b>	68	62	65	59	61	67	57
<b>Beamwidth, Vertical, degrees</b>	10.2	8.6	4.2	4.1	3.9	3.4	3.2
<b>Beam Tilt, degrees</b>	2-12	2-12	2-9	2-9	2-9	2-9	2-9
<b>USLS (First Lobe), dB</b>	15	16	17	16	17	17	19
<b>Front-to-Back Ratio at 180°, dB</b>	30	33	37	38	36	35	34
<b>Front-to-Back Total Power at 180° ± 30°, dB</b>	22	23	30	31	29	27	26
<b>Isolation, Cross Polarization, dB</b>	25	25	25	25	25	25	25
<b>Isolation, Inter-band, dB</b>	25	25	25	25	25	25	25
<b>VSWR   Return loss, dB</b>	1.5 14.0	1.5 14.0	1.5 14.0	1.5 14.0	1.5 14.0	1.5 14.0	1.5 14.0
<b>PIM, 3rd Order, 2 x 20 W, dBc</b>	-150	-150	-150	-150	-150	-150	-150
<b>Input Power per Port at 50°C, maximum, watts</b>	250	250	200	200	200	200	200

## Electrical Specifications, BASTA

	617-698	698-894	1695-1880	1850-1990	1920-2200	2300-2500	2500-2690
<b>Frequency Band, MHz</b>	<b>617-698</b>	<b>698-894</b>	<b>1695-1880</b>	<b>1850-1990</b>	<b>1920-2200</b>	<b>2300-2500</b>	<b>2500-2690</b>
<b>CPR at Boresight, dB</b>	16	16	25	23	19	21	27

## Mechanical Specifications

<b>Wind Loading @ Velocity, frontal</b>	987.0 N @ 150 km/h (221.9 lbf @ 150 km/h)
<b>Wind Loading @ Velocity, lateral</b>	291.0 N @ 150 km/h (65.4 lbf @ 150 km/h)
<b>Wind Loading @ Velocity, maximum</b>	1,257.0 N @ 150 km/h (282.6 lbf @ 150 km/h)
<b>Wind Loading @ Velocity, rear</b>	616.0 N @ 150 km/h (138.5 lbf @ 150 km/h)
<b>Wind Speed, maximum</b>	241 km/h (150 mph)

## Packaging and Weights

<b>Width, packed</b>	744 mm   29.291 in
<b>Depth, packed</b>	384 mm   15.118 in

# FFVV-65C-R2-HG

---

**Length, packed** 2590 mm | 101.969 in

**Weight, gross** 75 kg | 165.347 lb

## Regulatory Compliance/Certifications

**Agency**

ISO 9001:2015

**Classification**

Designed, manufactured and/or distributed under this quality management system

## Included Products

BSAMNT-3F – Mounting bracket for cylindrical pipe installations (60-115mm pipe diameter) for fix mechanical tilt applications.

## \* Footnotes

**Performance Note** Severe environmental conditions may degrade optimum performance