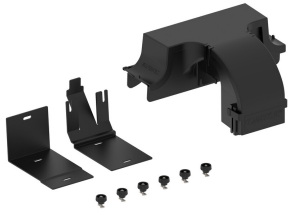


# FGSB-MEXP-E-ABF-HD

---



FiberGuide® 4-Inch Express Exit™ with Heavy Duty and Lateral Support Brackets, 4x12, Black

## Product Classification

<b>Regional Availability</b>	Asia   Australia/New Zealand   EMEA   Latin America   North America
<b>Portfolio</b>	CommScope®
<b>Product Type</b>	Express exit
<b>Product Brand</b>	FiberGuide®   FiberGuide®
<b>Product Series</b>	FGS

## General Specifications

<b>Color</b>	Black
<b>Orientation</b>	Horizontal
<b>Section Type</b>	Express exit

## Dimensions

<b>Height</b>	186.69 mm   7.35 in
<b>Width</b>	225.044 mm   8.86 in
<b>Length</b>	406.4 mm   16 in
<b>System Dimensions</b>	102 mm x 305 mm (4 in x 12 in)

## Ordering Tree

# FGSB-MEXP-E-ABF-HD

FGS <sup>9</sup> B - MEXP - <sup>10</sup> A/B/F

## Section Color

9	empty	yellow
	B	black

## Section Size

10	A/B/F	4 x 4/6/12 in, with 2 x 2 in exit
	E-A/B/F	4 x 4/6/12 in, with 4 x 4 in exit
	F-F/H-NC	4 x 12/18/24 in, with 4 x 12 in exit, no cover
	G-A/B/F	4 x 4/6/12 in, with 4 x 6 in exit
	LP-A/B/F	4 x 4/6/12 in, with 2 x 2 in exit, low profile
	LP-CA	4 x 4/6/12 in, with 2 x 4 in exit, low profile
	LP-G	2 x 6 in, with 2 x 2 in exit, low profile
	GS-ABF-NC	4 x 4/6/12 in, with 4 x 6 in exit, no cover
	CV	cover
	NC	no cover

## Material Specifications

**Material Type** Engineering Thermoplastic

## Environmental Specifications

**Flammability Rating** CSA S143 | UL 2024 | UL 94 V-0

**Halogen Characteristics** Blue Angel | TCO '99 | WEEE

**Safety Standard** CSA | UL

## Packaging and Weights

**Included** Hardware

**Packaging quantity** 1

**Weight, net** 4.967 kg | 10.95 lb

## Regulatory Compliance/Certifications

### Agency

CHINA-ROHS

REACH-SVHC

ROHS

UK-ROHS

### Classification

Below maximum concentration value

Compliant as per SVHC revision on [www.commscope.com/ProductCompliance](https://www.commscope.com/ProductCompliance)

Compliant

Compliant

