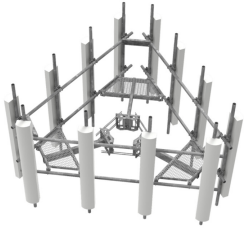


# MC-PM10M-12C-H10

---



ATLAS 10 ft Monopole Platform with (12) 2.88" OD x 120" Antenna Pipes. Includes Top Rail Kit.

The innovative ATLAS Monopole Platform provides high-load performance, Lower EPA, and reduced weight – all with a single-point tower connection.

NOTE: Engineering loading based on Antenna pipes vertically centered on main horizontal face.

## Product Classification

<b>Product Type</b>	Monopole platform kit
<b>Product Series</b>	ATLAS

## General Specifications

<b>Mounting</b>	Monopole, 304.8–1270 mm (12–50 in) OD
<b>Pipe, quantity</b>	12
<b>Sectors, quantity</b>	3

## Dimensions

<b>Height</b>	3,048 mm   120 in
<b>Face Width</b>	3.2 m   10.5 ft
<b>Platform Width</b>	3,200.4 mm   126 in
<b>Width</b>	3,200.4 mm   126 in
<b>Pipe Length</b>	3,048 mm   120 in
<b>Face Support Pipe Diameter</b>	73.025 mm   2.875 in
<b>Mounting Diameter, maximum</b>	1,143 mm   45 in
<b>Mounting Diameter, minimum</b>	304.8 mm   12 in
<b>Pipe Outer Diameter</b>	73.025 mm   2.875 in

## Material Specifications

<b>Material Type</b>	Hot dip galvanized steel
----------------------	--------------------------

## Mechanical Specifications

<b>Wind Rating</b>	For Specifications, please contact <a href="mailto:steelproducts@commscope.com">steelproducts@commscope.com</a> or call 800-255-1479
<b>Wind Rating Test Method</b>	TIA/EIA-222

# MC-PM10M-12C-H10

---

## Packaging and Weights

<b>Included</b>	Plain end pipes (12)   Platform   Rail   Ring mount
<b>Packaging quantity</b>	1

## Regulatory Compliance/Certifications

<b>Agency</b>	<b>Classification</b>
CHINA-ROHS	Above maximum concentration value
ROHS	Compliant/Exempted
UK-ROHS	Compliant/Exempted



## \* Footnotes

<b>Wind Rating</b>	BWS—Base Wind Speed; FBC—Florida Building Code
--------------------	--