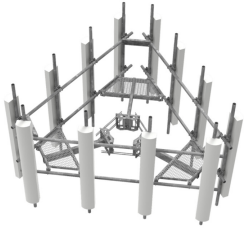


# MC-PM14M-15C-WLL

---



ATLAS 14 ft Monopole Platform with (15) 2.88" OD x 120" Antenna Pipes. Includes Top Rail Kit.

The innovative ATLAS Monopole Platform provides high-load performance, Lower EPA, and reduced weight – all with a single-point tower connection.

NOTE: Engineering loading based on Antenna pipes vertically centered on main horizontal face.

## Product Classification

**Product Type** Monopole platform kit

## General Specifications

**Mounting** Monopole, 304.8–1270 mm (12–50 in) OD

**Pipe, quantity** 15

**Sectors, quantity** 3

## Dimensions

**Height** 3,048 mm | 120 in

**Face Width** 4.42 m | 14.5 ft

**Platform Width** 4,419.6 mm | 174 in

**Width** 4,419.6 mm | 174 in

**Pipe Length** 3,048 mm | 120 in

**Face Support Pipe Diameter** 73.025 mm | 2.875 in

**Mounting Diameter, maximum** 1,143 mm | 45 in

**Mounting Diameter, minimum** 304.8 mm | 12 in

**Pipe Outer Diameter** 73.025 mm | 2.875 in

## Material Specifications

**Material Type** Hot dip galvanized steel

## Mechanical Specifications

**Wind Rating** For Specifications, please contact [steelproducts@commscope.com](mailto:steelproducts@commscope.com) or call 800-255-1479

**Wind Rating Test Method** TIA/EIA-222

# MC-PM14M-15C-WLL

---

## Packaging and Weights

**Included** Plain end pipes | Platform | Rail | Ring mount

**Packaging quantity** 1

## Regulatory Compliance/Certifications

Agency	Classification
CHINA-ROHS	Above maximum concentration value
ROHS	Compliant/Exempted
UK-ROHS	Compliant/Exempted



## \* Footnotes

**Wind Rating** BWS—Base Wind Speed; FBC—Florida Building Code