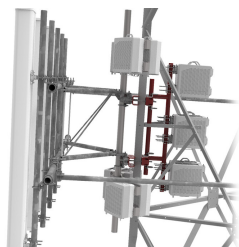


# MTC4112 | CORE RRU MOUNT



Core RRU Mount with 12" Stand-off - Mounts to Spine on G2 Series Mounts

Designed for G2 RHD Series Mounts with or without Extended Spine

- Internal tower RRU mount
- Decreased PIM from radio relocation
- Increased mount stability
- Decreased face loading
- Increased mount versatility without the need for a new RRU mount

NOTE: Requires use of RR-FA2 RRU brackets

## Product Classification

**Product Type** Remote radio head unit mount

## General Specifications

**Mounting** Pipe, 88.9 mm (3-1/2 in) OD

## Dimensions

**Height** 3,048 mm | 120 in

**Length** 419.1 mm | 16.5 in

**Compatible Diameter** 88.9 mm | 3.5 in

**Mounting Diameter, maximum** 88.9 mm | 3.5 in

**Mounting Diameter, minimum** 88.9 mm | 3.5 in

**Stand-off Distance** 304.8 mm | 12 in

## Material Specifications

**Material Type** Hot dip galvanized steel

## Mechanical Specifications

**Wind Rating** For Specifications, please contact your local ANDREW representative

## Packaging and Weights

**Included** Clamps | Hardware | Stand-off

**Packaging quantity** 1

# MTC4112 | CORE RRU MOUNT

**Weight, net** 50.476 kg | 111.28 lb

## Regulatory Compliance/Certifications

Agency	Classification
CHINA-ROHS	Above maximum concentration value
ROHS	Compliant/Exempted
UK-ROHS	Compliant/Exempted



## \* Footnotes

**Wind Rating** BWS—Base Wind Speed; FBC—Florida Building Code