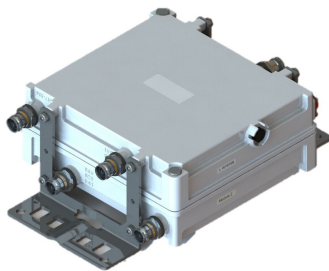


# TMAT19G21BL26-21 | E14R00P79



Tower Mounted Amplifier, Twin Triplexed PCS(B25), AWS 1–4 and B41 (bypass), with 617–894 MHz bypass, 4.3-10

- Supports 4 bands including 600MHz, AWS, PCS (B25) and 2496-2690MHz (B41)
- Bypass Band 41 on AWS-PCS port (triplexed)
- Low band 617-894 MHz bypass on a separate antenna port
- 1 device with 4 sub-units
- New 4.3-10 connectors for improved PIM performance and size reduction

## Product Classification

**Product Type** 1-BTS:2-ANT (Diplex) | Tower mounted amplifier

## General Specifications

**Color** Gray

**Modularity** 2-Twin

**Mounting** Pole | Wall

**Mounting Pipe Hardware** Band clamps (2)

**RF Connector Interface** 4.3-10 Female

## Dimensions

**Height** 235 mm | 9.252 in

**Width** 255 mm | 10.039 in

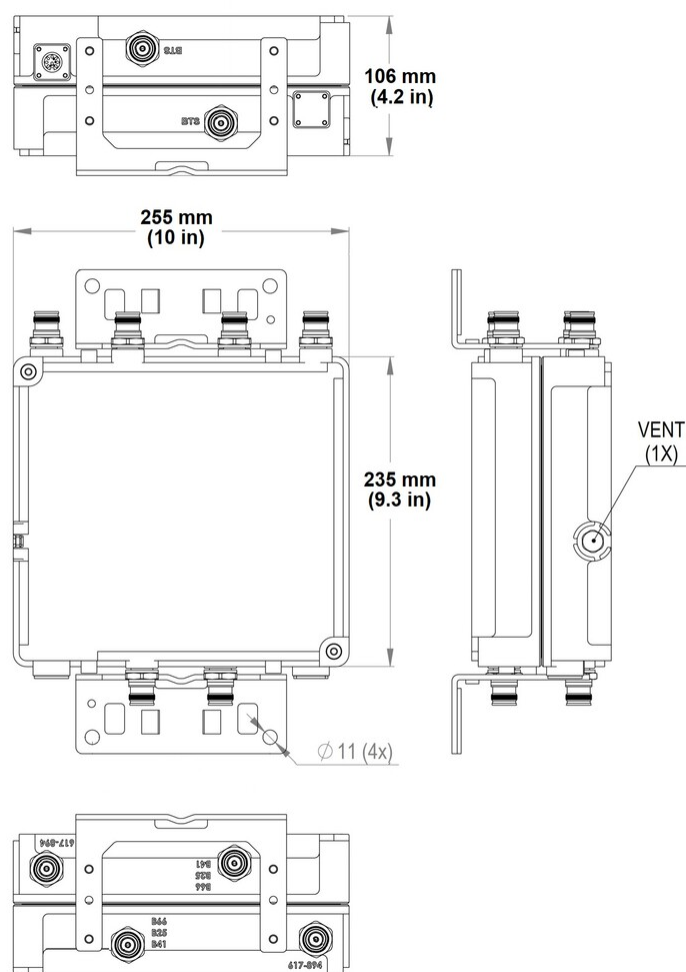
**Depth** 106 mm | 4.173 in

**Ground Screw Diameter** 5 mm | 0.197 in

**Mounting Pipe Diameter Range** 40–160 mm

## Outline Drawing

# TMAT19G21BL26-21 | E14R00P79



## Electrical Specifications

License Band, Band Pass	APT 700   CEL 850   EDD 800   LMR 750   LMR 800   TDD 2600   USA 700   USA 750
License Band, LNA	AWS 1700   PCS 1900

## Electrical Specifications, dc Power/Alarm

Lightning Surge Current	10 kA
Lightning Surge Current Waveform	8/20 waveform
Operating Current at Voltage	240 mA @ 12 V
Voltage	7–30 Vdc

## Electrical Specifications, AISG

AISG Carrier	2.176 MHz ± 100 ppm
--------------	---------------------

# TMAT19G21BL26-21 | E14R00P79

AISG Connector	8-pin DIN Female
AISG Connector Standard	IEC 60130-9
Default Protocol	AISG 2.0
Protocol	AISG 1.1   AISG 2.0
Voltage, AISG Mode	10–30 Vdc

## Electrical Specifications

Sub-module	1   2	1   2	1   2	1   2	1   2
Branch	1	2	2	2	2
Port Designation	617-894	B66-B25-B41	B66-B25-B41	B66-B25-B41	B66-B25-B41
License Band	APT 700, Band Pass CEL 850, Band Pass EDD 800, Band Pass LMR 750, Band Pass LMR 800, Band Pass USA 750, Band Pass	TDD 2600, Band Pass	AWS 1700, LNA	PCS 1900, LNA	PCS 1900, LNA
Return Loss, typical, dB			22	22	22
Return Loss - Bypass Mode, typical, dB			16	16	16

## Electrical Specifications Rx (Uplink)

Frequency Range, MHz	1695–1780	1850–1910	1910–1915
Bandwidth, MHz	85	60	5
Gain, nominal, dB	12	12	12
Gain Tolerance, dB	±1.2	±1.2	+1.2 / -1.5
Noise Figure, typical, dB	1.3	1.3	1.6
Total Group Delay, typical, ns	60	100	100
Insertion Loss - Bypass Mode, typical, dB	1.7	2.2	2.5

## Electrical Specifications Tx (Downlink)

Frequency Range, MHz	2110–2200	1930–1990	1990–1995
Bandwidth, MHz	90	60	5
Insertion Loss, typical, dB	0.15	0.4	0.4
Total Group Delay, typical, ns	15	35	35
Return Loss, typical, dB	22	22	22
RX Band Rejection, minimum, dB	55	40	40
Input Power, RMS, maximum,	200	200	200

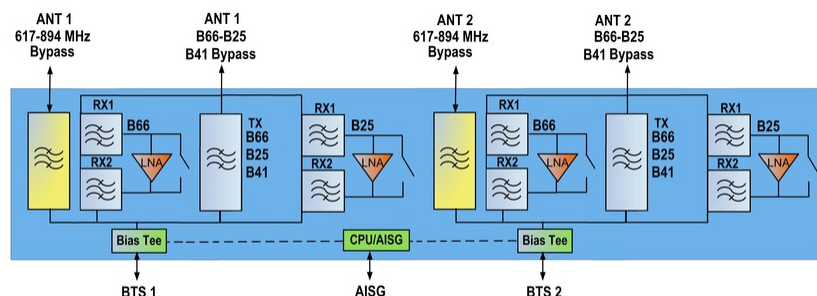
# TMAT19G21BL26-21 | E14R00P79

W			
Input Power, PEP, maximum, W	2000	2000	2000
3rd Order PIM, typical, dBc	-156	-156	-156
3rd Order PIM Test Method	1 x 20 W AWS CW tone 1 x 20 W PCS CW tone	2 x 20 W CW tones	2 x 20 W CW tones

## Electrical Specifications, Band Pass

Frequency Range, MHz	617–894	2496–2690
Insertion Loss, typical, dB	0.2	0.1
Total Group Delay, typical, ns	4	4
Return Loss, typical, dB	22	22
Isolation, minimum, dB	50	40
Input Power, RMS, maximum, W	200	200
Input Power, PEP, maximum, W	2000	2000
3rd Order PIM, typical, dBc	-156	-156
3rd Order PIM Test Method	2 x 20 W CW tones	2 x 20 W CW tones

## Block Diagram



## Material Specifications

Finish	Painted
--------	---------

## Environmental Specifications

Operating Temperature	-40 °C to +65 °C (-40 °F to +149 °F)
Relative Humidity	Up to 100%
Corrosion Test Method	IEC 60068-2-11, 30 days

# TMAT19G21BL26-21 | E14R00P79

**Ingress Protection Test Method** IEC 60529:2001, IP67

## Packaging and Weights

<b>Included</b>	Mounting hardware
<b>Mounting Hardware Weight</b>	0.7 kg   1.543 lb
<b>Weight, without mounting hardware</b>	7.65 kg   16.865 lb

## Regulatory Compliance/Certifications

Agency	Classification
CHINA-ROHS	Above maximum concentration value
REACH-SVHC	Compliant as per SVHC revision on <a href="http://www.andrew.com/ProductCompliance">www.andrew.com/ProductCompliance</a>
ROHS	Compliant/Exempted
UK-ROHS	Compliant/Exempted



## \* Footnotes

<b>License Band, Band Pass</b>	License Bands that are to be passed through with no amplification
<b>License Band, LNA</b>	License Bands that have RxUplink amplification