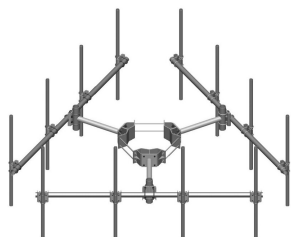


# MC-K10L-12-96



Monopole Co-location T-Frame Kit, 30 in to 60 in OD, 10 ft face, includes pipe

**OBSOLETE**

This product was discontinued on: August 18, 2022

Replaced By:

MC-K10M-12-96      Monopole Co-location T-Frame kit, 12 in to 50 in OD, 10 ft 6 in face, includes pipe

## Product Classification

**Product Type**      Monopole T-frame kit

## General Specifications

**Mounting**      Monopole, 762–1524 mm (30–60 in) OD

**Pipe, quantity**      12

**Sectors, quantity**      3

## Dimensions

**Height**      2,438.4 mm | 96 in

**Face Width**      3.2 m | 10.5 ft

**Width**      3,200.4 mm | 126 in

**Length**      914.4 mm | 36 in

**Pipe Length**      2,438.4 mm | 96 in

**Mounting Diameter, maximum**      1524 mm | 60 in

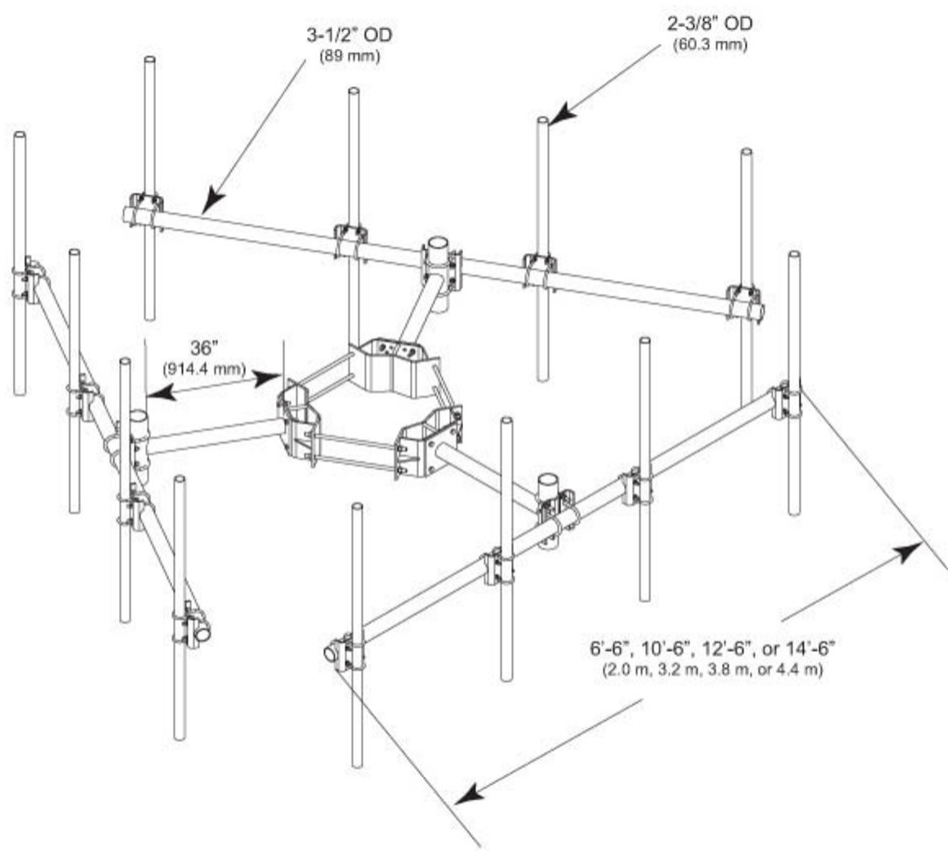
**Mounting Diameter, minimum**      762 mm | 30 in

**Pipe Outer Diameter**      60.96 mm | 2.4 in

**Stand-off Distance**      914.4 mm | 36 in

# MC-K10L-12-96

## Outline Drawing



## Material Specifications

**Material Type** Hot dip galvanized steel

## Mechanical Specifications

**Wind Rating** 120 mph (BWS) at 150 ft AGL | 140 mph (3-second gust) at 150 ft AGL using Exposure D per FBC

**Wind Rating Criteria** Four 72 in x 8 in panel antennas per sector

**Wind Rating Test Method** TIA/EIA-222

## Packaging and Weights

**Included** Cellular pipe frames | Pipe mounts | Ring mount | Stand-off arms

**Packaging quantity** 1

**Weight, net** 596.02 kg | 1314 lb

# MC-K10L-12-96

---

## Regulatory Compliance/Certifications

Agency	Classification
ISO 9001:2015	Designed, manufactured and/or distributed under this quality management system

## Included Products

MC-K10L-B	- Monopole Co-location T-Frame Kit, 30 in to 60 in OD, 10 ft face, pipe ordered separately
MT-219-H	- Pipe Mount Kit - 2-3/8" TO 3-1/2" PIPE - pipe not included
MT-651-96	- Plain End Pipe, 2-3/8 in OD x 96 in .120" A500C 46Ksi

## \* Footnotes

Wind Rating	BWS—Base Wind Speed; FBC—Florida Building Code
-------------	--