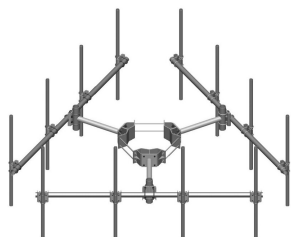


# MC-K14S-12-72



Monopole Co-location T-Frame Kit, 10 in to 30 in OD, 14 ft face, includes pipe

**OBSOLETE**

This product was discontinued on: August 18, 2022

Replaced By:

MC-K14M-12-72      Monopole Co-location T-Frame kit, 12 in to 50 in OD, 14 ft 6 in face, includes pipe

## Product Classification

**Product Type**                      Monopole T-frame kit

## General Specifications

**Mounting**                              Monopole, 254–762 mm (10–30 in) OD

**Pipe, quantity**                      12

**Sectors, quantity**                      3

## Dimensions

**Height**                                  1,828.8 mm | 72 in

**Face Width**                          4.42 m | 14.5 ft

**Width**                                  4,419.6 mm | 174 in

**Length**                                  914.4 mm | 36 in

**Pipe Length**                          1,828.8 mm | 72 in

**Mounting Diameter, maximum**      762 mm | 30 in

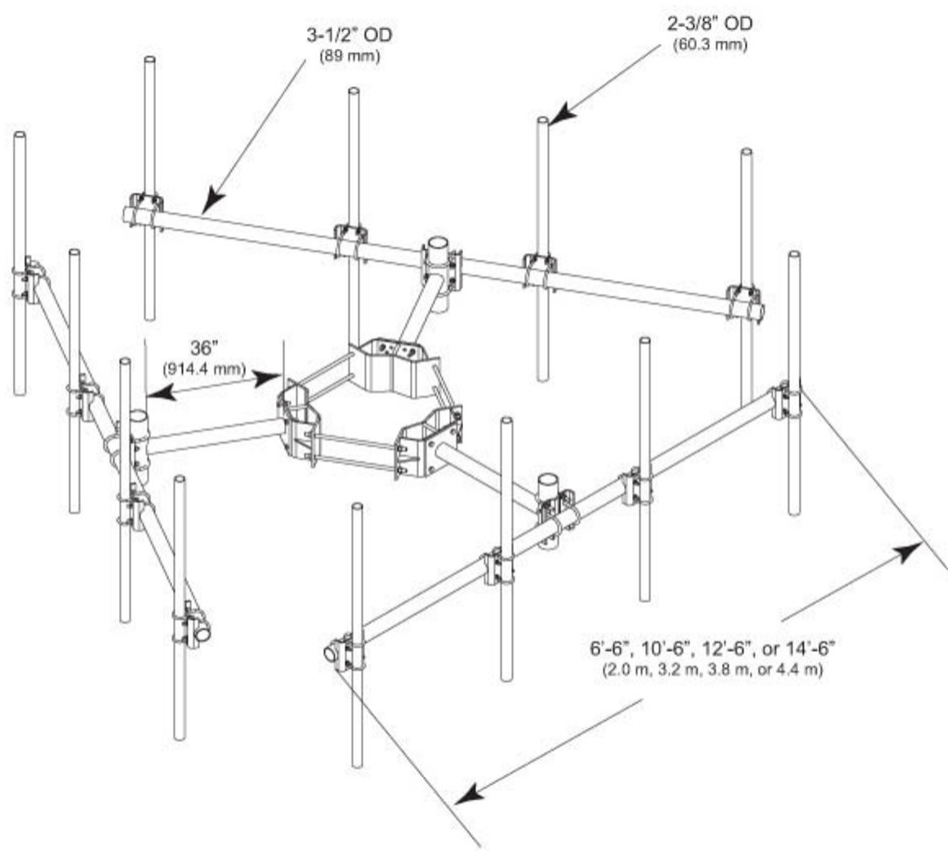
**Mounting Diameter, minimum**      254 mm | 10 in

**Pipe Outer Diameter**                  60.96 mm | 2.4 in

**Stand-off Distance**                      914.4 mm | 36 in

# MC-K14S-12-72

## Outline Drawing



## Material Specifications

**Material Type** Hot dip galvanized steel

## Mechanical Specifications

**Wind Rating** 120 mph (BWS) at 150 ft AGL | 140 mph (3-second gust) at 150 ft AGL using Exposure D per FBC

**Wind Rating Criteria** Four 72 in x 8 in panel antennas per sector

**Wind Rating Test Method** TIA/EIA-222

## Packaging and Weights

**Included** Cellular pipe frames | Pipe mounts | Ring mount | Stand-off arms

**Packaging quantity** 1

**Weight, net** 556.104 kg | 1226 lb

# MC-K14S-12-72

---

## Regulatory Compliance/Certifications

Agency	Classification
ISO 9001:2015	Designed, manufactured and/or distributed under this quality management system

## Included Products

MC-K14S-B	– Monopole Co-location T-Frame Kit, 10 in to 30 in OD, 14 ft face, pipe ordered separately
MT-219-H	– Pipe Mount Kit - 2-3/8" TO 3-1/2" PIPE - pipe not included
MT-651	– Plain End Pipe, 2-3/8 in OD x 72 in .120" A500C 46Ksi

## \* Footnotes

Wind Rating	BWS—Base Wind Speed; FBC—Florida Building Code
-------------	--