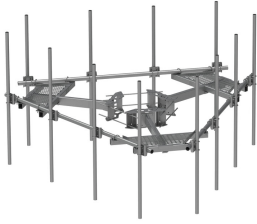


# MC-PK12M-B

---



Low-Profile Co-location Platform Base Kit, 12 ft face, 12 in to 50 in OD, pipe ordered separately

## Product Classification

**Product Type** Monopole platform kit

## General Specifications

**Mounting** Monopole, 304.8–1270 mm (12–50 in) OD

**Pipe, quantity** 0

**Sectors, quantity** 3

## Dimensions

**Height** 292.1 mm | 11.5 in

**Face Width** 3.81 m | 12.5 ft

**Width** 3810 mm | 150 in

**Length** 1,031.24 mm | 40.6 in

**Face Support Pipe Diameter** 88.9 mm | 3.5 in

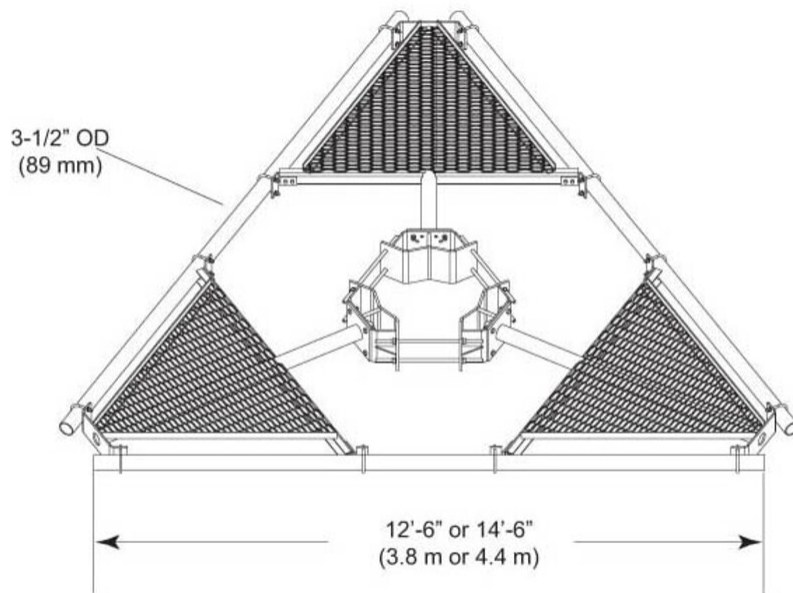
**Mounting Diameter, maximum** 1270 mm | 50 in

**Mounting Diameter, minimum** 304.8 mm | 12 in

**Pipe Outer Diameter** 0 mm | 0 in

# MC-PK12M-B

## Outline Drawing



## Material Specifications

**Material Type** Hot dip galvanized steel

## Mechanical Specifications

**Wind Rating** For Specifications, please contact your local ANDREW representative

**Wind Rating Test Method** TIA/EIA-222

## Packaging and Weights

**Included** Pipe mounts | Platform | Ring mount

**Packaging quantity** 1

**Weight, net** 480.808 kg | 1060 lb

## Regulatory Compliance/Certifications

Agency	Classification
ISO 9001:2015	Designed, manufactured and/or distributed under this quality management system

## \* Footnotes

# MC-PK12M-B

---

**Wind Rating**

BWS—Base Wind Speed; FBC—Florida Building Code

